



جزيرة
رمضان

RAMHAN ISLAND

The Island

Natural, raw, and untouched, Ramhan Island carries all the charm of nature from bays, beaches and mangrove trees, waiting by the seashore and eager to be discovered.

جزيرة رمحان هي جزيرة ساحرة في أبوظبي، تتمتع بجمال الطبيعة غير المسبوق حيث مياهها الجرها الأزرق وأشجار المانجروف النادرة.

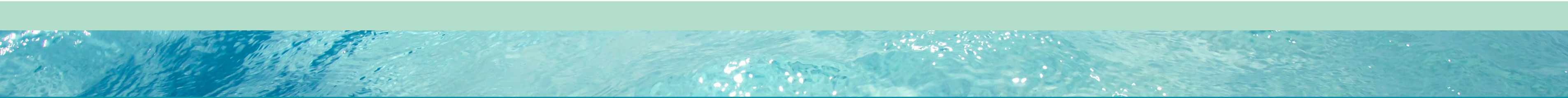


Where each home comes
with surreal water views.





Exceptional Island Masterplanning



Zen
ISLAND VILLAS

Flow
ISLAND VILLAS



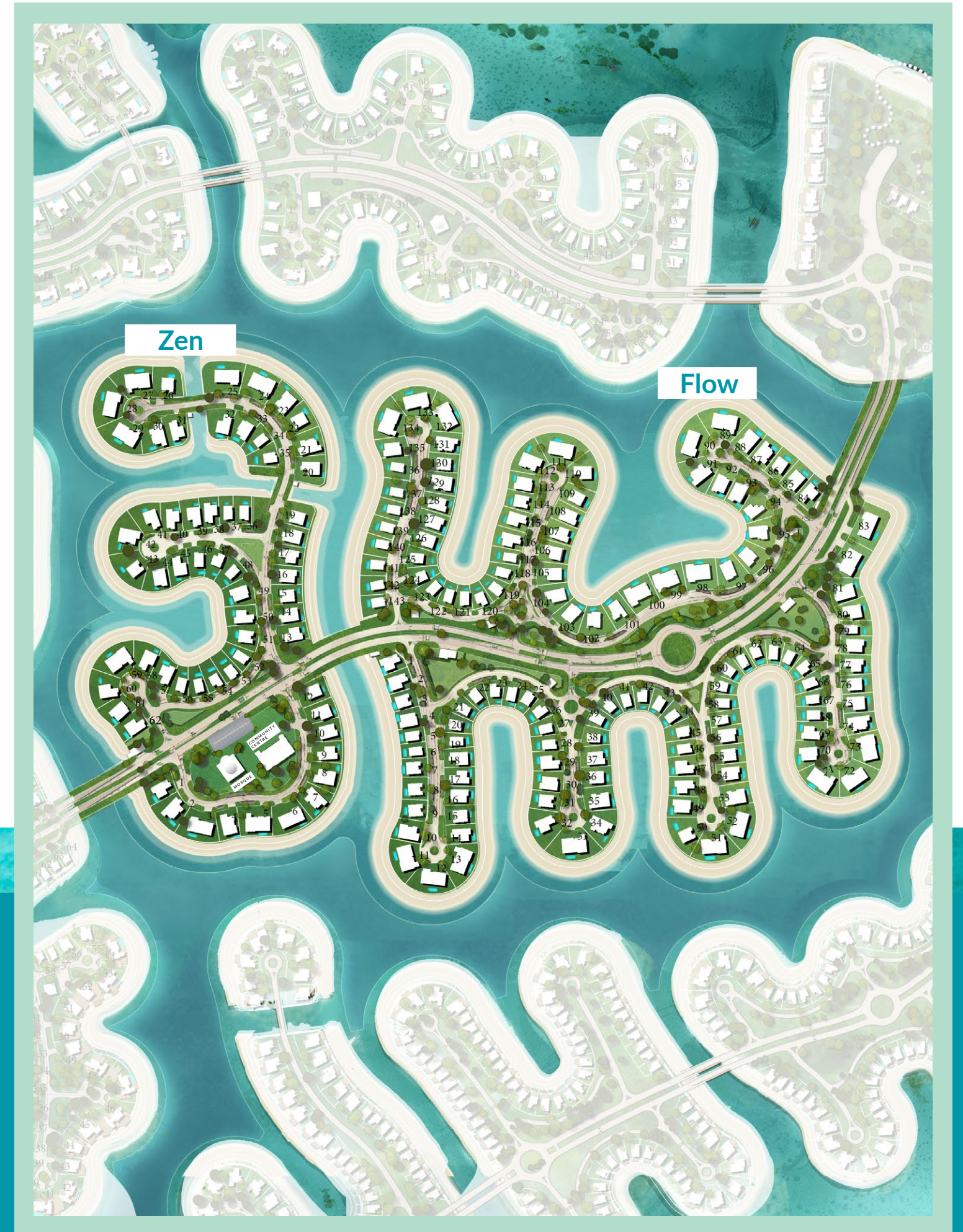
The Islands

Zen

ISLAND VILLAS

Flow

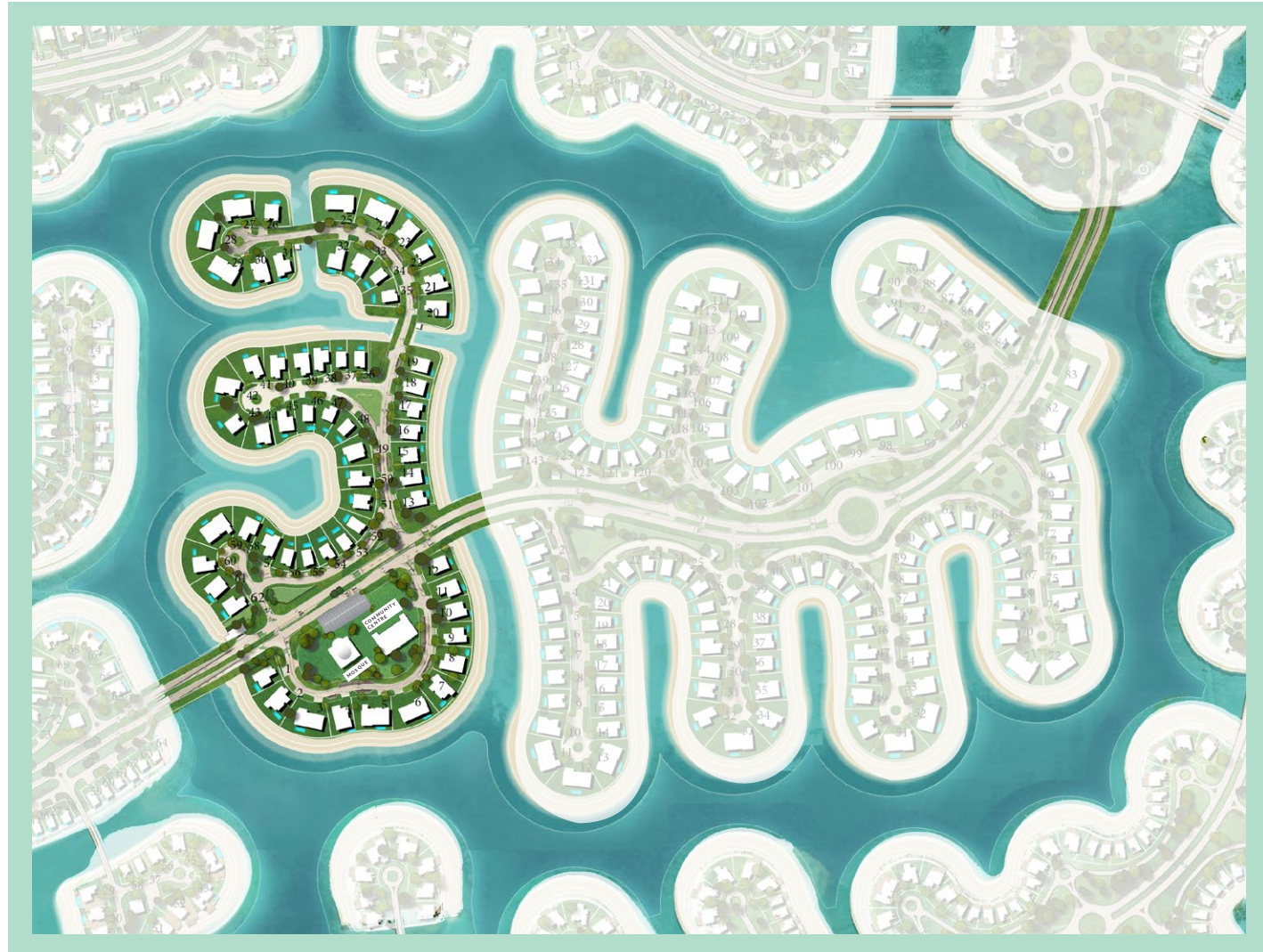
ISLAND VILLAS





Zen

ISLAND VILLAS

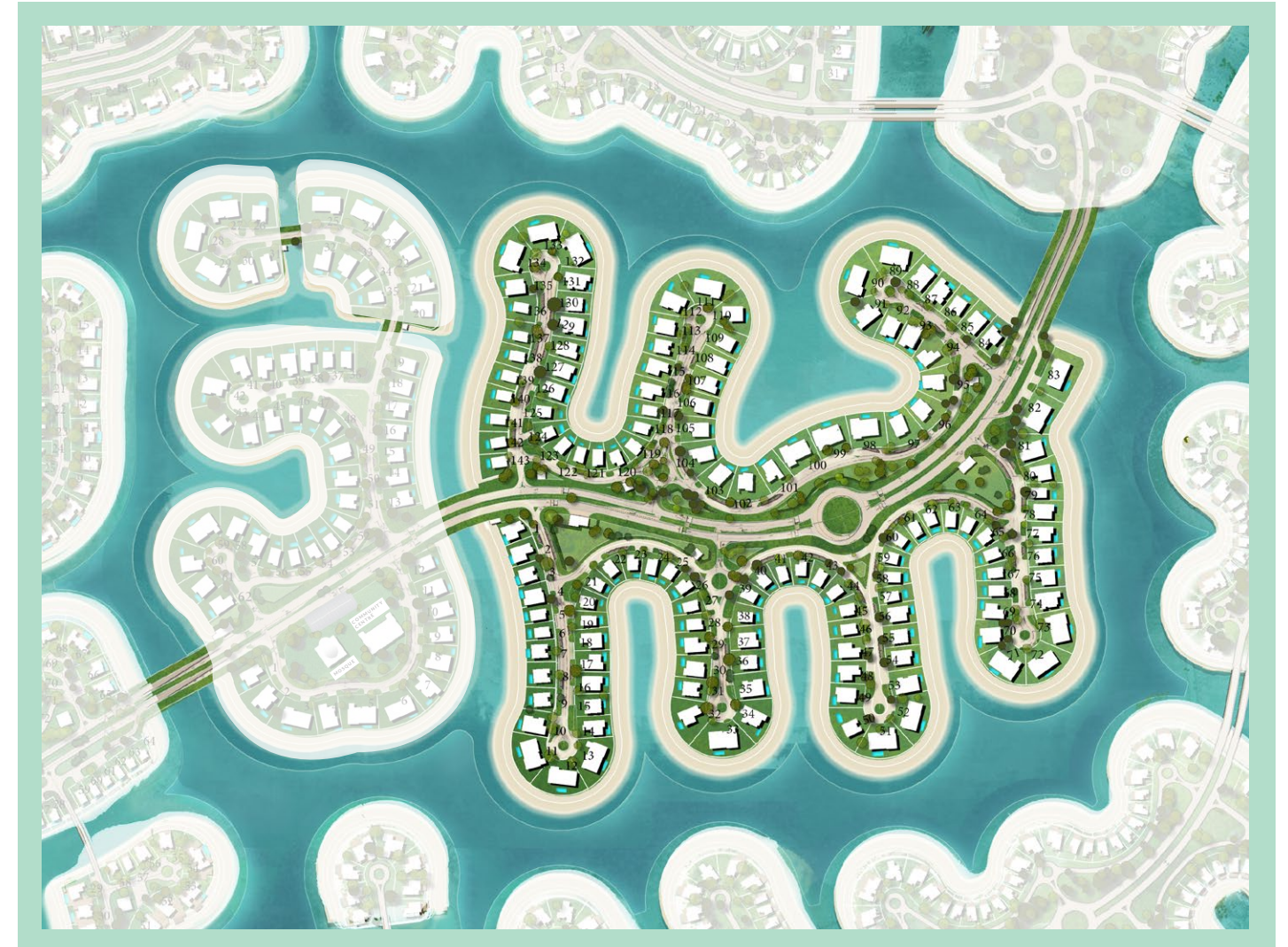


VILLAS

Sky Vintage Grace
Bliss Spark Charm

Flow

ISLAND VILLAS



VILLAS

Sky Vintage Grace
Bliss Spark Charm

Step into your serene home





SKY I

DISCLAIMER

Water channel distances are for illustrative reasons, and are subject to change without notice.

TOTAL
UNIT AREA: **791** SQM
8,519 SQFT

7 En-suite Bedrooms



SKY I

DISCLAIMER

Ancillary buildings are not shown on facade visuals.

TOTAL
UNIT AREA: **791** SQM
8,519 SQFT

7 En-suite Bedrooms

SKY I

7 En-suite Bedrooms



Ground Floor plan

Components	CountNo.	Components	CountNo.
Master Bedroom	1	Formal Living	1
Bedrooms	5	Formal Dining	1
Guest Bedroom	1	Maid's room	1
Living Area	1	Driver's room	1
Dining	1	Carport	3

DISCLAIMER

1. All room dimensions are measured to structural elements and exclude wall finishes and construction tolerances. 2. All dimensions have been provided by our consultant architects. 3. All materials, dimensions and drawings are approximate, information subject to change without notice. 4. Actual areas may vary from the stated area. Drawings not to scale. The developer reserves the right to make revisions. 5. Actual unit areas, front windows, porches, terraces, loggia and exterior trim detail may vary by elevation styles and floor level. 6. The unit orientation will be shown in the parcel layout and not as shown in the floor plans. 7. The location of ancillary buildings will vary from one plot to the other.

TOTAL GROSS AREA: **604** SQM / 6,505 SQFT

TOTAL UNIT AREA: **791** SQM / 8,519 SQFT



First Floor plan

Components	SQM	SQFT
Ground-floor area	262	2,822
First-floor area	265	2,847
Terraces & Porches	197	2,119
Driver	15	164
Carport	52	560
Min. Plot area	1,220	13,134
Max. Plot area	1,537	16,540



SKY I-M

DISCLAIMER

Water channel distances are for illustrative reasons, and are subject to change without notice.

TOTAL
UNIT AREA: **791** SQM
8,519 SQFT

7 En-suite Bedrooms



SKY I-M

DISCLAIMER

Ancillary buildings are not shown on facade visuals.

TOTAL
UNIT AREA: **791** SQM
8,519 SQFT

7 En-suite Bedrooms

RAMHAN ISLAND
SKY I-M
 7 En-suite Bedrooms



Ground Floor plan

Components	CountNo.	Components	CountNo.
Master Bedroom	1	Formal Living	1
Bedrooms	5	Formal Dining	1
Guest Bedroom	1	Maid's room	1
Living Area	1	Driver's room	1
Dining	1	Carport	3

DISCLAIMER

1. All room dimensions are measured to structural elements and exclude wall finishes and construction tolerances. 2. All dimensions have been provided by our consultant architects. 3. All materials, dimensions and drawings are approximate, information subject to change without notice. 4. Actual areas may vary from the stated area. Drawings not to scale. The developer reserves the right to make revisions. 5. Actual unit areas, front windows, porches, terraces, loggia and exterior trim detail may vary by elevation styles and floor level. 6. The unit orientation will be shown in the parcel layout and not as shown in the floor plans. 7. The location of ancillary buildings will vary from one plot to the other.

TOTAL GROSS AREA: **604** SQM / 6,505 SQFT

TOTAL UNIT AREA: **791** SQM / 8,519 SQFT



First Floor plan

Components	SQM	SQFT
Ground-floor area	262	2,822
First-floor area	265	2,847
Terraces & Porches	197	2,119
Driver	15	164
Carport	52	560
Min. Plot area	1,220	13,134
Max. Plot area	1,537	16,540



SKY VI

DISCLAIMER

Water channel distances are for illustrative reasons, and are subject to change without notice.

TOTAL
UNIT AREA: **751** SQM
8,080 SQFT

7 En-suite Bedrooms



SKY VI

DISCLAIMER

Ancillary buildings are not shown on facade visuals.

TOTAL
UNIT AREA: **751** SQM
8,080 SQFT

7 En-suite Bedrooms

SKY VI

7 En-suite Bedrooms



Ground Floor plan

Components	CountNo.	Components	CountNo.
Master Bedroom	1	Formal Living	1
Bedrooms	5	Formal Dining	1
Guest Bedroom	1	Maid's room	1
Living Area	1	Driver's room	1
Dining	1	Carport	3

DISCLAIMER

1. All room dimensions are measured to structural elements and exclude wall finishes and construction tolerances. 2. All dimensions have been provided by our consultant architects. 3. All materials, dimensions and drawings are approximate, information subject to change without notice. 4. Actual areas may vary from the stated area. Drawings not to scale. The developer reserves the right to make revisions. 5. Actual unit areas, front windows, porches, terraces, loggia and exterior trim detail may vary by elevation styles and floor level. 6. The unit orientation will be shown in the parcel layout and not as shown in the floor plans. 7. The location of ancillary buildings will vary from one plot to the other.

TOTAL GROSS AREA: **585** SQM / 6,301 SQFT

TOTAL UNIT AREA: **751** SQM / 8,080 SQFT



First Floor plan

Components	SQM	SQFT
Ground-floor area	270	2,903
First-floor area	251	2,706
Terraces & Porches	160	1,722
Driver	17	183
Carport	53	572
Min. Plot area	1,224	13,172
Max. Plot area	1,489	16,027



SKY VI-M

DISCLAIMER

Water channel distances are for illustrative reasons, and are subject to change without notice.

TOTAL
UNIT AREA: **751** SQM
8,080 SQFT

7 En-suite Bedrooms



SKY VI-M

DISCLAIMER

Ancillary buildings are not shown on facade visuals.

TOTAL
UNIT AREA: **751** SQM
8,080 SQFT

7 En-suite Bedrooms

SKY VI-M

7 En-suite Bedrooms



Ground Floor plan

Components	CountNo.	Components	CountNo.
Master Bedroom	1	Formal Living	1
Bedrooms	5	Formal Dining	1
Guest Bedroom	1	Maid's room	1
Living Area	1	Driver's room	1
Dining	1	Carport	3

DISCLAIMER

1. All room dimensions are measured to structural elements and exclude wall finishes and construction tolerances. 2. All dimensions have been provided by our consultant architects. 3. All materials, dimensions and drawings are approximate, information subject to change without notice. 4. Actual areas may vary from the stated area. Drawings not to scale. The developer reserves the right to make revisions. 5. Actual unit areas, front windows, porches, terraces, loggia and exterior trim detail may vary by elevation styles and floor level. 6. The unit orientation will be shown in the parcel layout and not as shown in the floor plans. 7. The location of ancillary buildings will vary from one plot to the other.

TOTAL GROSS AREA: **585** SQM / 6,301 SQFT

TOTAL UNIT AREA: **751** SQM / 8,080 SQFT



First Floor plan

Components	SQM	SQFT
Ground-floor area	270	2,903
First-floor area	251	2,706
Terraces & Porches	160	1,722
Driver	17	183
Carport	53	572
Min. Plot area	1,224	13,172
Max. Plot area	1,489	16,027



BLISS I

DISCLAIMER

Water channel distances are for illustrative reasons, and are subject to change without notice.

TOTAL
UNIT AREA: **637** SQM
6,862 SQFT

7 Bedrooms

5 En-suite + 2 Bedrooms



BLISS I

DISCLAIMER

Ancillary buildings are not shown on facade visuals.

TOTAL
UNIT AREA: **637** SQM
6,862 SQFT

7 Bedrooms

5 En-suite + 2 Bedrooms

BLISS I

5 En-suite + 2 Bedrooms



Ground Floor plan

Components	CountNo.	Components	CountNo.
Master Bedroom	1	Dining	1
Bedrooms	5	Maid's room	1
Guest Bedroom	1	Driver's room	1
Living Area	1	Carport	3

DISCLAIMER

1. All room dimensions are measured to structural elements and exclude wall finishes and construction tolerances. 2. All dimensions have been provided by our consultant architects. 3. All materials, dimensions and drawings are approximate, information subject to change without notice. 4. Actual areas may vary from the stated area. Drawings not to scale. The developer reserves the right to make revisions. 5. Actual unit areas, front windows, porches, terraces, loggia and exterior trim detail may vary by elevation styles and floor level. 6. The unit orientation will be shown in the parcel layout and not as shown in the floor plans. 7. The location of ancillary buildings will vary from one plot to the other. 8. Additional bathroom at first floor to convert all rooms to be En-suite room. 9. Carport to be detached from the building.

TOTAL GROSS AREA: **535** SQM / 5,758 SQFT

TOTAL UNIT AREA: **637** SQM / 6,862 SQFT



First Floor plan

Components	SQM	SQFT
Ground-floor area	227	2,444
First-floor area	191	2,055
Terraces & Porches	122	1,313
Driver's Room	17	184
Carport	80	859
Min. Plot area	764	8,219
Max. Plot area	1,144	12,314



BLISS I-M

DISCLAIMER

Water channel distances are for illustrative reasons, and are subject to change without notice.

TOTAL
UNIT AREA: **637** SQM
6,862 SQFT

7 Bedrooms

5 En-suite + 2 Bedrooms



BLISS I-M

DISCLAIMER

Ancillary buildings are not shown on facade visuals.

TOTAL
UNIT AREA: **637** SQM
6,862 SQFT

7 Bedrooms

5 En-suite + 2 Bedrooms

RAMHAN ISLAND
BLISS I-M

5 En-suite + 2 Bedrooms



Ground Floor plan

Components	CountNo.	Components	CountNo.
Master Bedroom	1	Dining	1
Bedrooms	5	Maid's room	1
Guest Bedroom	1	Driver's room	1
Living Area	1	Carport	3

DISCLAIMER

1. All room dimensions are measured to structural elements and exclude wall finishes and construction tolerances. 2. All dimensions have been provided by our consultant architects. 3. All materials, dimensions and drawings are approximate, information subject to change without notice. 4. Actual areas may vary from the stated area. Drawings not to scale. The developer reserves the right to make revisions. 5. Actual unit areas, front windows, porches, terraces, loggia and exterior trim detail may vary by elevation styles and floor level. 6. The unit orientation will be shown in the parcel layout and not as shown in the floor plans. 7. The location of ancillary buildings will vary from one plot to the other. 8. Additional bathroom at first floor to convert all rooms to be En-suite room. 9. Carport to be detached from the building.

TOTAL GROSS AREA: **535** SQM / 5,758 SQFT

TOTAL UNIT AREA: **637** SQM / 6,862 SQFT



First Floor plan

Components	SQM	SQFT
Ground-floor area	227	2,444
First-floor area	191	2,055
Terraces & Porches	122	1,313
Driver's Room	17	184
Carport	80	859
Min. Plot area	764	8,219
Max. Plot area	1,144	12,314



BLISS II

DISCLAIMER

Water channel distances are for illustrative reasons, and are subject to change without notice.

TOTAL
UNIT AREA: **580** SQM
6,241 SQFT

7 Bedrooms

5 En-suite + 2 Bedrooms



BLISS II

DISCLAIMER

Ancillary buildings are not shown on facade visuals.

TOTAL
UNIT AREA: **580** SQM
6,241 SQFT

7 Bedrooms

5 En-suite + 2 Bedrooms

BLISS II

5 En-suite + 2 Bedrooms



Ground Floor plan

Components	CountNo.	Components	CountNo.
Master Bedroom	1	Dining	1
Bedrooms	5	Maid's room	1
Guest Bedroom	1	Driver's room	1
Living Area	1	Carport	3

DISCLAIMER

1. All room dimensions are measured to structural elements and exclude wall finishes and construction tolerances. 2. All dimensions have been provided by our consultant architects. 3. All materials, dimensions and drawings are approximate, information subject to change without notice. 4. Actual areas may vary from the stated area. Drawings not to scale. The developer reserves the right to make revisions. 5. Actual unit areas, front windows, porches, terraces, loggia and exterior trim detail may vary by elevation styles and floor level. 6. The unit orientation will be shown in the parcel layout and not as shown in the floor plans. 7. The location of ancillary buildings will vary from one plot to the other. 8. Additional bathroom at first floor to convert all rooms to be En-suite room. 9. Carport to be detached from the building.

TOTAL GROSS AREA: **508** SQM / 5,463 SQFT

TOTAL UNIT AREA: **580** SQM / 6,241 SQFT



First Floor plan

Components	SQM	SQFT
Ground-floor area	222	2,385
First-floor area	188	2,023
Terraces & Porches	102	1,099
Driver's Room	17	184
Carport	51	550
Min. Plot area	796	8,568
Max. Plot area	1,250	13,453



BLISS II-M

DISCLAIMER

Water channel distances are for illustrative reasons, and are subject to change without notice.

TOTAL
UNIT AREA: **580** SQM
6,241 SQFT

7 Bedrooms

5 En-suite + 2 Bedrooms



BLISS II-M

DISCLAIMER

Ancillary buildings are not shown on facade visuals.

TOTAL
UNIT AREA: **580** SQM
6,241 SQFT

7 Bedrooms

5 En-suite + 2 Bedrooms

RAMHAN ISLAND
BLISS II-M

5 En-suite + 2 Bedrooms



Ground Floor plan

Components	CountNo.	Components	CountNo.
Master Bedroom	1	Dining	1
Bedrooms	5	Maid's room	1
Guest Bedroom	1	Driver's room	1
Living Area	1	Carport	3

DISCLAIMER

1. All room dimensions are measured to structural elements and exclude wall finishes and construction tolerances. 2. All dimensions have been provided by our consultant architects. 3. All materials, dimensions and drawings are approximate, information subject to change without notice. 4. Actual areas may vary from the stated area. Drawings not to scale. The developer reserves the right to make revisions. 5. Actual unit areas, front windows, porches, terraces, loggia and exterior trim detail may vary by elevation styles and floor level. 6. The unit orientation will be shown in the parcel layout and not as shown in the floor plans. 7. The location of ancillary buildings will vary from one plot to the other. 8. Additional bathroom at first floor to convert all rooms to be En-suite room. 9. Carport to be detached from the building.

TOTAL GROSS AREA: **508** SQM / 5,463 SQFT

TOTAL UNIT AREA: **580** SQM / 6,241 SQFT



First Floor plan

Components	SQM	SQFT
Ground-floor area	222	2,385
First-floor area	188	2,023
Terraces & Porches	102	1,099
Driver's Room	17	184
Carport	51	550
Min. Plot area	796	8,568
Max. Plot area	1,250	13,453



VINTAGE I

DISCLAIMER

Water channel distances are for illustrative reasons, and are subject to change without notice.

TOTAL
UNIT AREA: **512** SQM
5,512 SQFT

6 Bedrooms

4 En-suite + 2 Bedrooms



VINTAGE I

DISCLAIMER

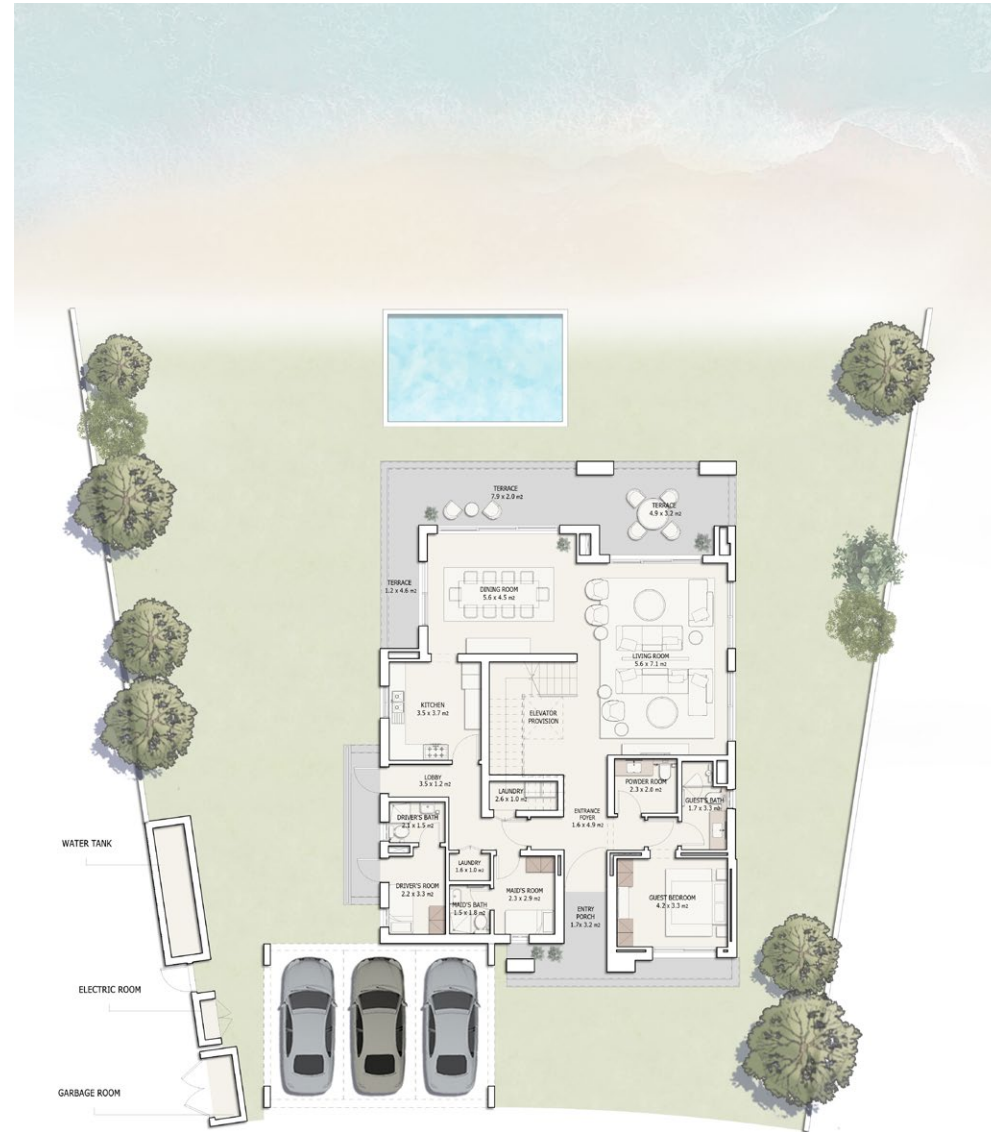
Ancillary buildings are not shown on facade visuals.

TOTAL
UNIT AREA: **512** SQM
5,512 SQFT

6 Bedrooms

4 En-suite + 2 Bedrooms

RAMHAN ISLAND
VINTAGE I
 4 En-suite + 2 Bedrooms



Ground Floor plan

Components	CountNo.	Components	CountNo.
Master Bedroom	1	Dining	1
Bedrooms	4	Maid's room	1
Guest Bedroom	1	Driver's room	1
Living Area	1	Carport	3

DISCLAIMER

1. All room dimensions are measured to structural elements and exclude wall finishes and construction tolerances. 2. All dimensions have been provided by our consultant architects. 3. All materials, dimensions and drawings are approximate, information subject to change without notice. 4. Actual areas may vary from the stated area. Drawings not to scale. The developer reserves the right to make revisions. 5. Actual unit areas, front windows, porches, terraces, loggia and exterior trim detail may vary by elevation styles and floor level. 6. The unit orientation will be shown in the parcel layout and not as shown in the floor plans. 7. The location of ancillary buildings will vary from one plot to the other.

TOTAL GROSS AREA: **469** SQM / 5,049 SQFT

TOTAL UNIT AREA: **512** SQM / 5,512 SQFT



First Floor plan

Components	SQM	SQFT
Ground-floor area	194	2,092
First-floor area	198	2,128
Terraces & Porches	69	739
Driver	0	0
Carport	51	554
Min. Plot area	701	7,541
Max. Plot area	922	9,924



VINTAGE I-M

DISCLAIMER

Water channel distances are for illustrative reasons, and are subject to change without notice.

TOTAL
UNIT AREA: **512** SQM
5,512 SQFT

6 Bedrooms

4 En-suite + 2 Bedrooms



VINTAGE I-M

DISCLAIMER

Ancillary buildings are not shown on facade visuals.

TOTAL
UNIT AREA: **512** SQM
5,512 SQFT

6 Bedrooms

4 En-suite + 2 Bedrooms

RAMHAN ISLAND
VINTAGE I-M
 4 En-suite + 2 Bedrooms



Ground Floor plan

Components	CountNo.	Components	CountNo.
Master Bedroom	1	Dining	1
Bedrooms	4	Maid's room	1
Guest Bedroom	1	Driver's room	1
Living Area	1	Carport	3

DISCLAIMER

1. All room dimensions are measured to structural elements and exclude wall finishes and construction tolerances. 2. All dimensions have been provided by our consultant architects. 3. All materials, dimensions and drawings are approximate, information subject to change without notice. 4. Actual areas may vary from the stated area. Drawings not to scale. The developer reserves the right to make revisions. 5. Actual unit areas, front windows, porches, terraces, loggia and exterior trim detail may vary by elevation styles and floor level. 6. The unit orientation will be shown in the parcel layout and not as shown in the floor plans. 7. The location of ancillary buildings will vary from one plot to the other.

TOTAL GROSS AREA: **469** SQM / 5,049 SQFT

TOTAL UNIT AREA: **512** SQM / 5,512 SQFT



First Floor plan

Components	SQM	SQFT
Ground-floor area	194	2,092
First-floor area	198	2,128
Terraces & Porches	69	739
Driver	0	0
Carport	51	554
Min. Plot area	701	7,541
Max. Plot area	922	9,924



VINTAGE II

DISCLAIMER

Water channel distances are for illustrative reasons, and are subject to change without notice.

TOTAL
UNIT AREA: **499** SQM
5,376 SQFT

6 Bedrooms

4 En-suite + 2 Bedrooms



VINTAGE II

DISCLAIMER

Ancillary buildings are not shown on facade visuals.

TOTAL
UNIT AREA: **499** SQM
5,376 SQFT

6 Bedrooms

4 En-suite + 2 Bedrooms

VINTAGE II

4 En-suite + 2 Bedrooms



Ground Floor plan

Components	CountNo.	Components	CountNo.
Master Bedroom	1	Dining	1
Bedrooms	4	Maid's room	1
Guest Bedroom	1	Driver's room	1
Living Area	1	Carport	3

DISCLAIMER

1. All room dimensions are measured to structural elements and exclude wall finishes and construction tolerances. 2. All dimensions have been provided by our consultant architects. 3. All materials, dimensions and drawings are approximate, information subject to change without notice. 4. Actual areas may vary from the stated area. Drawings not to scale. The developer reserves the right to make revisions. 5. Actual unit areas, front windows, porches, terraces, loggia and exterior trim detail may vary by elevation styles and floor level. 6. The unit orientation will be shown in the parcel layout and not as shown in the floor plans. 7. The location of ancillary buildings will vary from one plot to the other.

TOTAL GROSS AREA: **463** SQM / 4,987 SQFT

TOTAL UNIT AREA: **499** SQM / 5,376 SQFT



First Floor plan

Components	SQM	SQFT
Ground-floor area	191	2,060
First-floor area	194	2,089
Terraces & Porches	60	644
Driver	0	0
Carport	54	582
Min. Plot area	692	7,445
Max. Plot area	1,221	13,142



VINTAGE II-M

DISCLAIMER

Water channel distances are for illustrative reasons, and are subject to change without notice.

TOTAL
UNIT AREA: **499** SQM
5,376 SQFT

6 Bedrooms

4 En-suite + 2 Bedrooms



VINTAGE II-M

DISCLAIMER

Ancillary buildings are not shown on facade visuals.

TOTAL
UNIT AREA: **499** SQM
5,376 SQFT

6 Bedrooms

4 En-suite + 2 Bedrooms

RAMHAN ISLAND
VINTAGE II-M
 4 En-suite + 2 Bedrooms



Ground Floor plan

Components	CountNo.	Components	CountNo.
Master Bedroom	1	Dining	1
Bedrooms	4	Maid's room	1
Guest Bedroom	1	Driver's room	1
Living Area	1	Carport	3

TOTAL GROSS AREA: **463** SQM / 4,987 SQFT

TOTAL UNIT AREA: **499** SQM / 5,376 SQFT



First Floor plan

Components	SQM	SQFT
Ground-floor area	191	2,060
First-floor area	194	2,089
Terraces & Porches	60	644
Driver	0	0
Carport	54	582
Min. Plot area	692	7,445
Max. Plot area	1,221	13,142

DISCLAIMER

1. All room dimensions are measured to structural elements and exclude wall finishes and construction tolerances. 2. All dimensions have been provided by our consultant architects. 3. All materials, dimensions and drawings are approximate, information subject to change without notice. 4. Actual areas may vary from the stated area. Drawings not to scale. The developer reserves the right to make revisions. 5. Actual unit areas, front windows, porches, terraces, loggia and exterior trim detail may vary by elevation styles and floor level. 6. The unit orientation will be shown in the parcel layout and not as shown in the floor plans. 7. The location of ancillary buildings will vary from one plot to the other.



SPARK I

DISCLAIMER

Water channel distances are for illustrative reasons, and are subject to change without notice.

TOTAL
UNIT AREA: **549** SQM
5,913 SQFT

5 Bedrooms

3 En-suite + 2 Bedrooms



SPARK I

DISCLAIMER

Ancillary buildings are not shown on facade visuals.

TOTAL
UNIT AREA: **549** SQM
5,913 SQFT

5 Bedrooms

3 En-suite + 2 Bedrooms

RAMHAN ISLAND
SPARK I
 3 En-suite + 2 Bedrooms



Ground Floor plan

Components	CountNo.	Components	CountNo.
Master Bedroom	1	Dining	1
Bedrooms	3	Maid's room	1
Guest Bedroom	1	Driver's room	1
Living Area	1	Carport	2

DISCLAIMER

1. All room dimensions are measured to structural elements and exclude wall finishes and construction tolerances. 2. All dimensions have been provided by our consultant architects. 3. All materials, dimensions and drawings are approximate, information subject to change without notice. 4. Actual areas may vary from the stated area. Drawings not to scale. The developer reserves the right to make revisions. 5. Actual unit areas, front windows, porches, terraces, loggia and exterior trim detail may vary by elevation styles and floor level. 6. The unit orientation will be shown in the parcel layout and not as shown in the floor plans. 7. The location of ancillary buildings will vary from one plot to the other.

TOTAL GROSS AREA: **394** SQM / 4,238 SQFT

TOTAL UNIT AREA: **549** SQM / 5,913 SQFT



First Floor plan

Components	SQM	SQFT
Ground-floor area	186	2,003
First-floor area	150	1,613
Terraces & Porches	130	1,396
Driver	14	151
Carport	69	744
Min. Plot area	670	7,212
Max. Plot area	1,186	12,767



SPARK I-M

DISCLAIMER

Water channel distances are for illustrative reasons, and are subject to change without notice.

TOTAL
UNIT AREA: **549** SQM
5,913 SQFT

5 Bedrooms

3 En-suite + 2 Bedrooms



SPARK I-M

DISCLAIMER

Ancillary buildings are not shown on facade visuals.

TOTAL
UNIT AREA: **549** SQM
5,913 SQFT

5 Bedrooms

3 En-suite + 2 Bedrooms

RAMHAN ISLAND
SPARK I-M
 3 En-suite + 2 Bedrooms



Ground Floor plan

Components	CountNo.	Components	CountNo.
Master Bedroom	1	Dining	1
Bedrooms	3	Maid's room	1
Guest Bedroom	1	Driver's room	1
Living Area	1	Carport	2

DISCLAIMER

1. All room dimensions are measured to structural elements and exclude wall finishes and construction tolerances. 2. All dimensions have been provided by our consultant architects. 3. All materials, dimensions and drawings are approximate, information subject to change without notice. 4. Actual areas may vary from the stated area. Drawings not to scale. The developer reserves the right to make revisions. 5. Actual unit areas, front windows, porches, terraces, loggia and exterior trim detail may vary by elevation styles and floor level. 6. The unit orientation will be shown in the parcel layout and not as shown in the floor plans. 7. The location of ancillary buildings will vary from one plot to the other.

TOTAL GROSS AREA: **394** SQM / 4,238 SQFT

TOTAL UNIT AREA: **549** SQM / 5,913 SQFT



First Floor plan

Components	SQM	SQFT
Ground-floor area	186	2,003
First-floor area	150	1,613
Terraces & Porches	130	1,396
Driver	14	151
Carport	69	744
Min. Plot area	670	7,212
Max. Plot area	1,186	12,767



SPARK II

DISCLAIMER

Water channel distances are for illustrative reasons, and are subject to change without notice.

TOTAL
UNIT AREA: **499** SQM
5,373 SQFT

5 Bedrooms

3 En-suite + 2 Bedrooms



SPARK II

DISCLAIMER

Ancillary buildings are not shown on facade visuals.

TOTAL
UNIT AREA: **499** SQM
5,373 SQFT

5 Bedrooms

3 En-suite + 2 Bedrooms

RAMHAN ISLAND
SPARK II
 3 En-suite + 2 Bedrooms



Ground Floor plan

Components	CountNo.	Components	CountNo.
Master Bedroom	1	Dining	1
Bedrooms	3	Maid's room	1
Guest Bedroom	1	Driver's room	1
Living Area	1	Carport	2

DISCLAIMER

1. All room dimensions are measured to structural elements and exclude wall finishes and construction tolerances. 2. All dimensions have been provided by our consultant architects. 3. All materials, dimensions and drawings are approximate, information subject to change without notice. 4. Actual areas may vary from the stated area. Drawings not to scale. The developer reserves the right to make revisions. 5. Actual unit areas, front windows, porches, terraces, loggia and exterior trim detail may vary by elevation styles and floor level. 6. The unit orientation will be shown in the parcel layout and not as shown in the floor plans. 7. The location of ancillary buildings will vary from one plot to the other.

TOTAL GROSS AREA: **389** SQM / 4,192 SQFT

TOTAL UNIT AREA: **499** SQM / 5,373 SQFT



First Floor plan

Components	SQM	SQFT
Ground-floor area	186	2,005
First-floor area	150	1,614
Terraces & Porches	82	886
Driver	15	157
Carport	66	711
Min. Plot area	713	7,671
Max. Plot area	1,100	11,844



SPARK II-M

DISCLAIMER

Water channel distances are for illustrative reasons, and are subject to change without notice.

TOTAL
UNIT AREA: **499** SQM
5,373 SQFT

5 Bedrooms

3 En-suite + 2 Bedrooms



SPARK II-M

DISCLAIMER

Ancillary buildings are not shown on facade visuals.

TOTAL
UNIT AREA: **499** SQM
5,373 SQFT

5 Bedrooms

3 En-suite + 2 Bedrooms

RAMHAN ISLAND
SPARK II-M
 3 En-suite + 2 Bedrooms



Ground Floor plan

Components	CountNo.	Components	CountNo.
Master Bedroom	1	Dining	1
Bedrooms	3	Maid's room	1
Guest Bedroom	1	Driver's room	1
Living Area	1	Carport	2

DISCLAIMER

1. All room dimensions are measured to structural elements and exclude wall finishes and construction tolerances. 2. All dimensions have been provided by our consultant architects. 3. All materials, dimensions and drawings are approximate, information subject to change without notice. 4. Actual areas may vary from the stated area. Drawings not to scale. The developer reserves the right to make revisions. 5. Actual unit areas, front windows, porches, terraces, loggia and exterior trim detail may vary by elevation styles and floor level. 6. The unit orientation will be shown in the parcel layout and not as shown in the floor plans. 7. The location of ancillary buildings will vary from one plot to the other.

TOTAL GROSS AREA: **389** SQM / 4,192 SQFT

TOTAL UNIT AREA: **499** SQM / 5,373 SQFT



First Floor plan

Components	SQM	SQFT
Ground-floor area	186	2,005
First-floor area	150	1,614
Terraces & Porches	82	886
Driver	15	157
Carport	66	711
Min. Plot area	713	7,671
Max. Plot area	1,100	11,844



GRACE II

DISCLAIMER

Water channel distances are for illustrative reasons, and are subject to change without notice.

TOTAL
UNIT AREA: **312** SQM
3,357 SQFT

4 Bedrooms

2 En-suite + 2 Bedrooms



GRACE II

DISCLAIMER
Ancillary buildings are not shown on facade visuals.

TOTAL
UNIT AREA: **312** SQM
3,357 SQFT

4 Bedrooms

2 En-suite + 2 Bedrooms

RAMHAN ISLAND
GRACE II
 2 En-suite + 2 Bedrooms



Ground Floor plan

Components	CountNo.	Components	CountNo.
Master Bedroom	1	Dining	1
Bedrooms	2	Maid's room	1
Guest Bedroom	1	Driver's room	1
Living Area	1	Carport	2

TOTAL GROSS AREA: **234** SQM / 2,518 SQFT

TOTAL UNIT AREA: **312** SQM / 3,357 SQFT



First Floor plan

Components	SQM	SQFT
Ground-floor area	121	1,301
First-floor area	102	1,009
Terraces & Porches	37	398
Driver	0	0
Carport	52	558
Min. Plot area	455	4,902
Max. Plot area	734	7,900

DISCLAIMER

1. All room dimensions are measured to structural elements and exclude wall finishes and construction tolerances. 2. All dimensions have been provided by our consultant architects. 3. All materials, dimensions and drawings are approximate, information subject to change without notice. 4. Actual areas may vary from the stated area. Drawings not to scale. The developer reserves the right to make revisions. 5. Actual unit areas, front windows, porches, terraces, loggia and exterior trim detail may vary by elevation styles and floor level. 6. The unit orientation will be shown in the parcel layout and not as shown in the floor plans. 7. The location of ancillary buildings will vary from one plot to the other.



GRACE II-M

DISCLAIMER

Water channel distances are for illustrative reasons, and are subject to change without notice.

TOTAL
UNIT AREA: **312** SQM
3,357 SQFT

4 Bedrooms

2 En-suite + 2 Bedrooms



GRACE II-M

DISCLAIMER

Ancillary buildings are not shown on facade visuals.

TOTAL
UNIT AREA: **312** SQM
3,357 SQFT

4 Bedrooms

2 En-suite + 2 Bedrooms

GRACE II-M

2 En-suite + 2 Bedrooms



Ground Floor plan

Components	CountNo.	Components	CountNo.
Master Bedroom	1	Dining	1
Bedrooms	2	Maid's room	1
Guest Bedroom	1	Driver's room	1
Living Area	1	Carport	2

TOTAL GROSS AREA: **234** SQM / 2,518 SQFT

TOTAL UNIT AREA: **312** SQM / 3,357 SQFT



First Floor plan

Components	SQM	SQFT
Ground-floor area	121	1,301
First-floor area	102	1,009
Terraces & Porches	37	398
Driver	0	0
Carport	52	558
Min. Plot area	455	4,902
Max. Plot area	734	7,900

DISCLAIMER

1. All room dimensions are measured to structural elements and exclude wall finishes and construction tolerances. 2. All dimensions have been provided by our consultant architects. 3. All materials, dimensions and drawings are approximate, information subject to change without notice. 4. Actual areas may vary from the stated area. Drawings not to scale. The developer reserves the right to make revisions. 5. Actual unit areas, front windows, porches, terraces, loggia and exterior trim detail may vary by elevation styles and floor level. 6. The unit orientation will be shown in the parcel layout and not as shown in the floor plans. 7. The location of ancillary buildings will vary from one plot to the other.



GRACE III

DISCLAIMER

Water channel distances are for illustrative reasons, and are subject to change without notice.

TOTAL
UNIT AREA: **353** SQM
3,801 SQFT

4 Bedrooms

2 En-suite + 2 Bedrooms



GRACE III

DISCLAIMER

Ancillary buildings are not shown on facade visuals.

TOTAL
UNIT AREA: **353** SQM
3,801 SQFT

4 Bedrooms

2 En-suite + 2 Bedrooms

RAMHAN ISLAND
GRACE III
 2 En-suite + 2 Bedrooms



Ground Floor plan

Components	CountNo.	Components	CountNo.
Master Bedroom	1	Dining	1
Bedrooms	2	Maid's room	1
Guest Bedroom	1	Driver's room	1
Living Area	1	Carport	2

TOTAL GROSS AREA: **285** SQM / 3,072 SQFT
 TOTAL UNIT AREA: **353** SQM / 3,801 SQFT



First Floor plan

Components	SQM	SQFT
Ground-floor area	127	1,367
First-floor area	100	1,073
Terraces & Porches	80	862
Driver	0	0
Carport	46	499
Min. Plot area	467	5,023
Max. Plot area	645	6,941

DISCLAIMER

1. All room dimensions are measured to structural elements and exclude wall finishes and construction tolerances. 2. All dimensions have been provided by our consultant architects. 3. All materials, dimensions and drawings are approximate, information subject to change without notice. 4. Actual areas may vary from the stated area. Drawings not to scale. The developer reserves the right to make revisions. 5. Actual unit areas, front windows, porches, terraces, loggia and exterior trim detail may vary by elevation styles and floor level. 6. The unit orientation will be shown in the parcel layout and not as shown in the floor plans. 7. The location of ancillary buildings will vary from one plot to the other.



GRACE III-M

DISCLAIMER

Water channel distances are for illustrative reasons, and are subject to change without notice.

TOTAL
UNIT AREA: **353** SQM
3,801 SQFT

4 Bedrooms

2 En-suite + 2 Bedrooms



GRACE III-M

DISCLAIMER

Ancillary buildings are not shown on facade visuals.

TOTAL
UNIT AREA: **353** SQM
3,801 SQFT

4 Bedrooms

2 En-suite + 2 Bedrooms

GRACE III-M

2 En-suite + 2 Bedrooms



Ground Floor plan

Components	CountNo.	Components	CountNo.
Master Bedroom	1	Dining	1
Bedrooms	2	Maid's room	1
Guest Bedroom	1	Driver's room	1
Living Area	1	Carport	2

TOTAL GROSS AREA: **285** SQM / 3,072 SQFT

TOTAL UNIT AREA: **353** SQM / 3,801 SQFT



First Floor plan

Components	SQM	SQFT
Ground-floor area	127	1,367
First-floor area	100	1,073
Terraces & Porches	80	862
Driver	0	0
Carport	46	499
Min. Plot area	467	5,023
Max. Plot area	645	6,941

DISCLAIMER

1. All room dimensions are measured to structural elements and exclude wall finishes and construction tolerances. 2. All dimensions have been provided by our consultant architects. 3. All materials, dimensions and drawings are approximate, information subject to change without notice. 4. Actual areas may vary from the stated area. Drawings not to scale. The developer reserves the right to make revisions. 5. Actual unit areas, front windows, porches, terraces, loggia and exterior trim detail may vary by elevation styles and floor level. 6. The unit orientation will be shown in the parcel layout and not as shown in the floor plans. 7. The location of ancillary buildings will vary from one plot to the other.



CHARM III

DISCLAIMER

Water channel distances are for illustrative reasons, and are subject to change without notice.

TOTAL
UNIT AREA: **347** SQM
3,730 SQFT

3 En-suite Bedrooms



CHARM III

DISCLAIMER

Ancillary buildings are not shown on facade visuals.

TOTAL
UNIT AREA: **347** SQM
3,730 SQFT

3 En-suite Bedrooms

RAMHAN ISLAND
CHARM III

3 En-suite Bedrooms



Ground Floor plan

Components	CountNo.	Components	CountNo.
Master Bedroom	1	Dining	1
Bedrooms	2	Maid's room	1
Guest Bedroom	-	Driver's room	1
Living Area	1	Carport	2

TOTAL GROSS AREA: **263** SQM / 2,831 SQFT

TOTAL UNIT AREA: **347** SQM / 3,730 SQFT



First Floor plan

Components	SQM	SQFT
Ground-floor area	118	1,275
First-floor area	117	1,264
Terraces & Porches	51	544
Driver	15	157
Carport	46	490
Min. Plot area	486	5,231
Max. Plot area	677	7,284

DISCLAIMER

1. All room dimensions are measured to structural elements and exclude wall finishes and construction tolerances. 2. All dimensions have been provided by our consultant architects. 3. All materials, dimensions and drawings are approximate, information subject to change without notice. 4. Actual areas may vary from the stated area. Drawings not to scale. The developer reserves the right to make revisions. 5. Actual unit areas, front windows, porches, terraces, loggia and exterior trim detail may vary by elevation styles and floor level. 6. The unit orientation will be shown in the parcel layout and not as shown in the floor plans. 7. The location of ancillary buildings will vary from one plot to the other.



CHARM III-M

DISCLAIMER

Water channel distances are for illustrative reasons, and are subject to change without notice.

TOTAL
UNIT AREA: **347** SQM
3,730 SQFT

3 En-suite Bedrooms



CHARM III-M

DISCLAIMER

Ancillary buildings are not shown on facade visuals.

TOTAL
UNIT AREA: **347** SQM
3,730 SQFT

3 En-suite Bedrooms

CHARM III-M

3 En-suite Bedrooms

TOTAL GROSS AREA: **263** SQM / 2,831 SQFT

TOTAL UNIT AREA: **347** SQM / 3,730 SQFT



Ground Floor plan

Components	CountNo.	Components	CountNo.
Master Bedroom	1	Dining	1
Bedrooms	2	Maid's room	1
Guest Bedroom	-	Driver's room	1
Living Area	1	Carport	2



First Floor plan

Components	SQM	SQFT
Ground-floor area	118	1,275
First-floor area	117	1,264
Terraces & Porches	51	544
Driver	15	157
Carport	46	490
Min. Plot area	486	5,231
Max. Plot area	677	7,284

DISCLAIMER

1. All room dimensions are measured to structural elements and exclude wall finishes and construction tolerances. 2. All dimensions have been provided by our consultant architects. 3. All materials, dimensions and drawings are approximate, information subject to change without notice. 4. Actual areas may vary from the stated area. Drawings not to scale. The developer reserves the right to make revisions. 5. Actual unit areas, front windows, porches, terraces, loggia and exterior trim detail may vary by elevation styles and floor level. 6. The unit orientation will be shown in the parcel layout and not as shown in the floor plans. 7. The location of ancillary buildings will vary from one plot to the other.



CHARM IV

DISCLAIMER

Water channel distances are for illustrative reasons, and are subject to change without notice.

TOTAL
UNIT AREA: **331** SQM
3,559 SQFT

3 En-suite Bedrooms



CHARM IV

DISCLAIMER

Ancillary buildings are not shown on facade visuals.

TOTAL
UNIT AREA: **331** SQM
3,559 SQFT

3 En-suite Bedrooms

RAMHAN ISLAND CHARM IV

3 En-suite Bedrooms



Ground Floor plan

Components	CountNo.	Components	CountNo.
Master Bedroom	1	Dining	1
Bedrooms	2	Maid's room	1
Guest Bedroom	-	Driver's room	1
Living Area	1	Carport	2

DISCLAIMER

1. All room dimensions are measured to structural elements and exclude wall finishes and construction tolerances. 2. All dimensions have been provided by our consultant architects. 3. All materials, dimensions and drawings are approximate, information subject to change without notice. 4. Actual areas may vary from the stated area. Drawings not to scale. The developer reserves the right to make revisions. 5. Actual unit areas, front windows, porches, terraces, loggia and exterior trim detail may vary by elevation styles and floor level. 6. The unit orientation will be shown in the parcel layout and not as shown in the floor plans. 7. The location of ancillary buildings will vary from one plot to the other.

TOTAL GROSS AREA: **273** SQM / 2,933 SQFT

TOTAL UNIT AREA: **331** SQM / 3,559 SQFT



First Floor plan

Components	SQM	SQFT
Ground-floor area	113	1,219
First-floor area	127	1,367
Terraces & Porches	30	325
Driver	15	164
Carport	46	491
Min. Plot area	489	5,267
Max. Plot area	653	7,033



CHARM IV-M

DISCLAIMER

Water channel distances are for illustrative reasons, and are subject to change without notice.

TOTAL
UNIT AREA: **331** SQM
3,559 SQFT

3 En-suite Bedrooms



CHARM IV-M

DISCLAIMER

Ancillary buildings are not shown on facade visuals.

TOTAL
UNIT AREA: **331** SQM
3,559 SQFT

3 En-suite Bedrooms

CHARM IV-M

3 En-suite Bedrooms



Ground Floor plan

Components	CountNo.	Components	CountNo.
Master Bedroom	1	Dining	1
Bedrooms	2	Maid's room	1
Guest Bedroom	-	Driver's room	1
Living Area	1	Carport	2

TOTAL GROSS AREA: **273** SQM / 2,933 SQFT

TOTAL UNIT AREA: **331** SQM / 3,559 SQFT



First Floor plan

Components	SQM	SQFT
Ground-floor area	113	1,219
First-floor area	127	1,367
Terraces & Porches	30	325
Driver	15	164
Carport	46	491
Min. Plot area	489	5,267
Max. Plot area	653	7,033

DISCLAIMER

1. All room dimensions are measured to structural elements and exclude wall finishes and construction tolerances. 2. All dimensions have been provided by our consultant architects. 3. All materials, dimensions and drawings are approximate, information subject to change without notice. 4. Actual areas may vary from the stated area. Drawings not to scale. The developer reserves the right to make revisions. 5. Actual unit areas, front windows, porches, terraces, loggia and exterior trim detail may vary by elevation styles and floor level. 6. The unit orientation will be shown in the parcel layout and not as shown in the floor plans. 7. The location of ancillary buildings will vary from one plot to the other.



Scheme 1 - Living Space



Scheme 1 - Living Space



Scheme 1 - Bedroom



Scheme 2 - Living Space



Scheme 2 - Bedroom



Scheme 2 - Bathroom

SPECIFICATION & FACILITIES - INTERIOR SCHEME 1

1. ENTRY FOYER

- FLOORS HIGH QUALITY MARBLE
- WALLS PAINT
- CEILING PAINT

2. LIVING AREAS & DINING ROOM

- FLOORS HIGH QUALITY MARBLE
- WALLS PAINT
- CEILING PAINT

3. KITCHEN/GOURMET CABINET

- FLOORS HIGH QUALITY MARBLE
- WALLS PAINT
- CEILING PAINT
- COUNTERTOP HIGH QUALITY STONE

4. DOORS

- ENTRANCE SOLID WOODWORK
- INTERNAL DOORS STAINED VENEER WOODWORK

5. POWDER ROOM & BATHROOMS

- FLOORS HIGH QUALITY MARBLE
- WALLS HIGH QUALITY MARBLE/PAINT
- CEILING PAINT

6. ALL BEDROOMS

- FLOORS ENGINEERED WOOD
- WALLS PAINT
- CEILING PAINT

7. UTILITY ROOMS & BATHS

- FLOORS HIGH QUALITY TILES
- WALLS HIGH QUALITY TILES/PAINT
- CEILING PAINT

8. SANITARYWARE

- HIGH QUALITY SANITARY FIXTURES & FITTINGS

9. AIR CONDITIONING UNITS

- INCLUDED

10. WATER HEATER

- INCLUDED

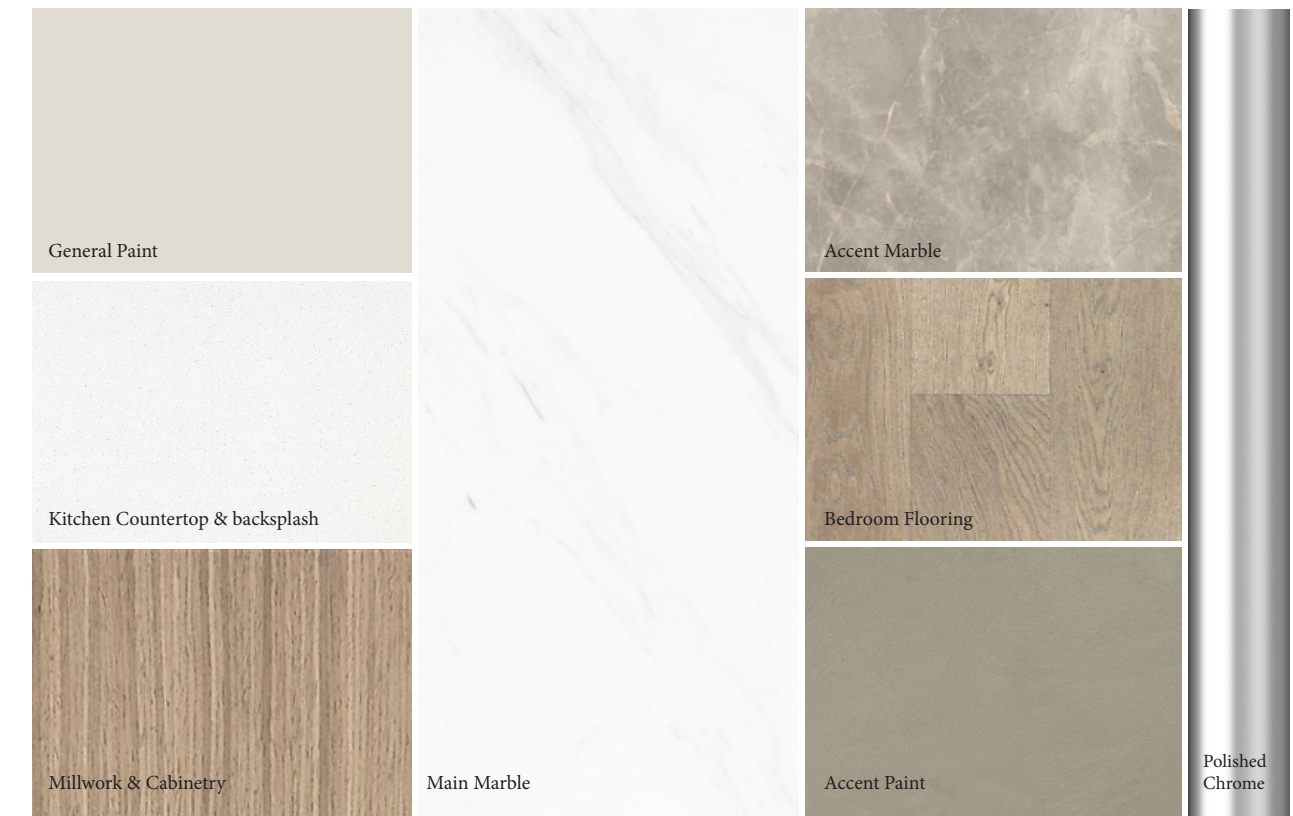
11. KITCHEN APPLIANCES

- NOT INCLUDED

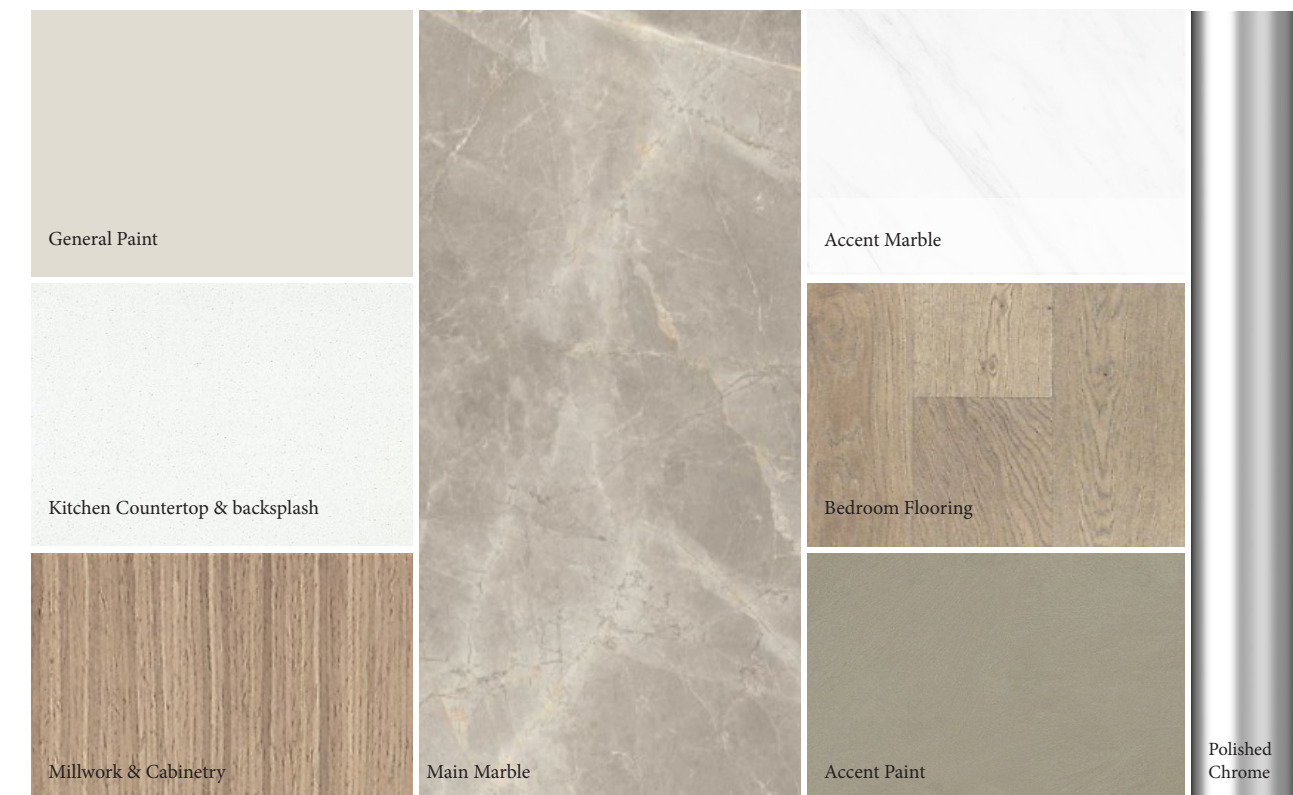
12. CABINETS, WARDROBES & WIC

- INCLUDED

All materials are tentative. Information is subject to change without notice depending on availability of the specified materials.



LIGHT SCHEME



DARK SCHEME

SPECIFICATION & FACILITIES - INTERIOR SCHEME 2

1. ENTRY FOYER

- FLOORS HIGH QUALITY MARBLE
- WALLS PAINT
- CEILING PAINT

2. LIVING AREAS & DINING ROOM

- FLOORS HIGH QUALITY WOOD
- WALLS PAINT
- CEILING PAINT

3. KITCHEN/GOURMET CABINET

- FLOORS HIGH QUALITY MARBLE
- WALLS PAINT
- CEILING PAINT
- COUNTERTOP HIGH QUALITY STONE

4. DOORS

- ENTRANCE SOLID WOODWORK
- INTERNAL DOORS STAINED VENEER WOODWORK

5. POWDER ROOM & BATHROOMS

- FLOORS HIGH QUALITY MARBLE
- WALLS HIGH QUALITY MARBLE/PAINT
- CEILING PAINT

6. ALL BEDROOMS

- FLOORS ENGINEERED WOOD
- WALLS PAINT
- CEILING PAINT

7. UTILITY ROOMS & BATHS

- FLOORS HIGH QUALITY TILES
- WALLS HIGH QUALITY TILES/PAINT
- CEILING PAINT

8. SANITARYWARE

- HIGH QUALITY SANITARY FIXTURES & FITTINGS

9. AIR CONDITIONING UNITS

- INCLUDED

10. WATER HEATER

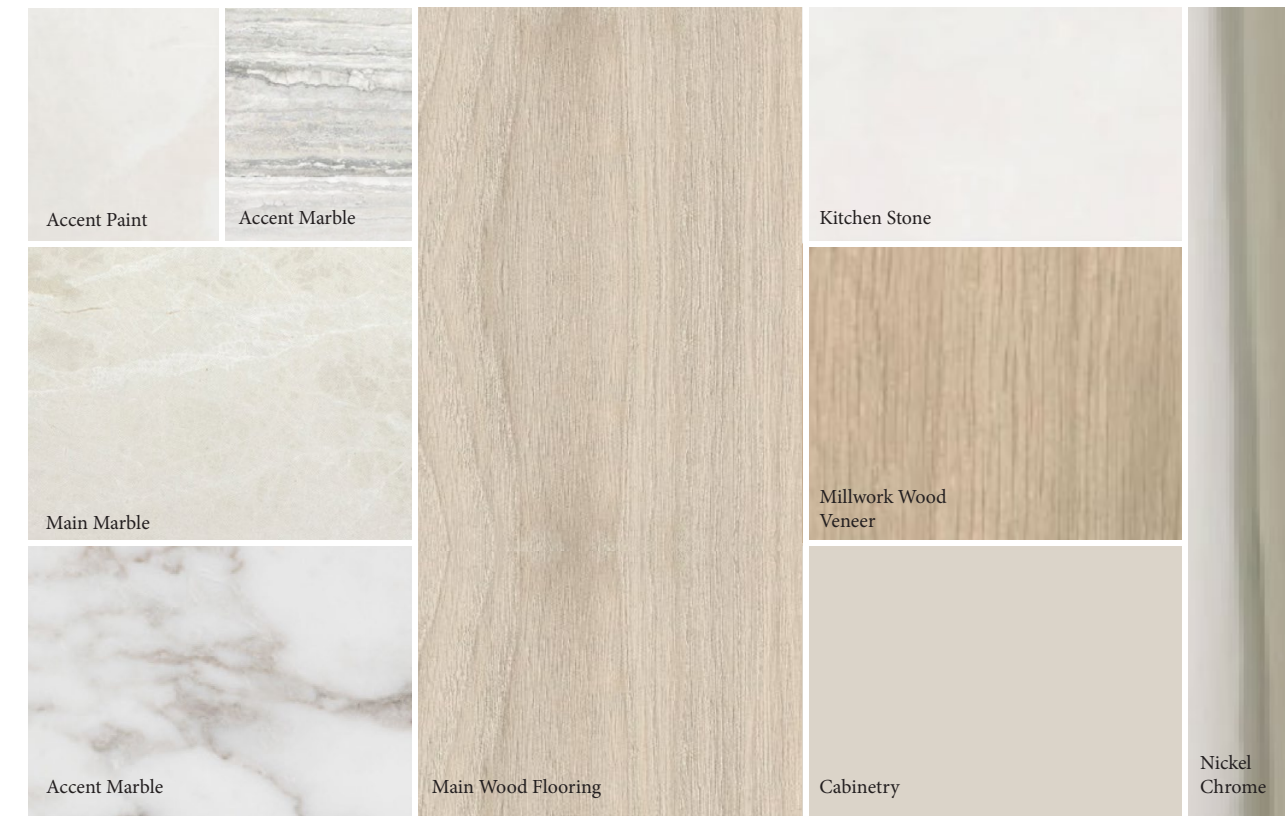
- INCLUDED

11. KITCHEN APPLIANCES

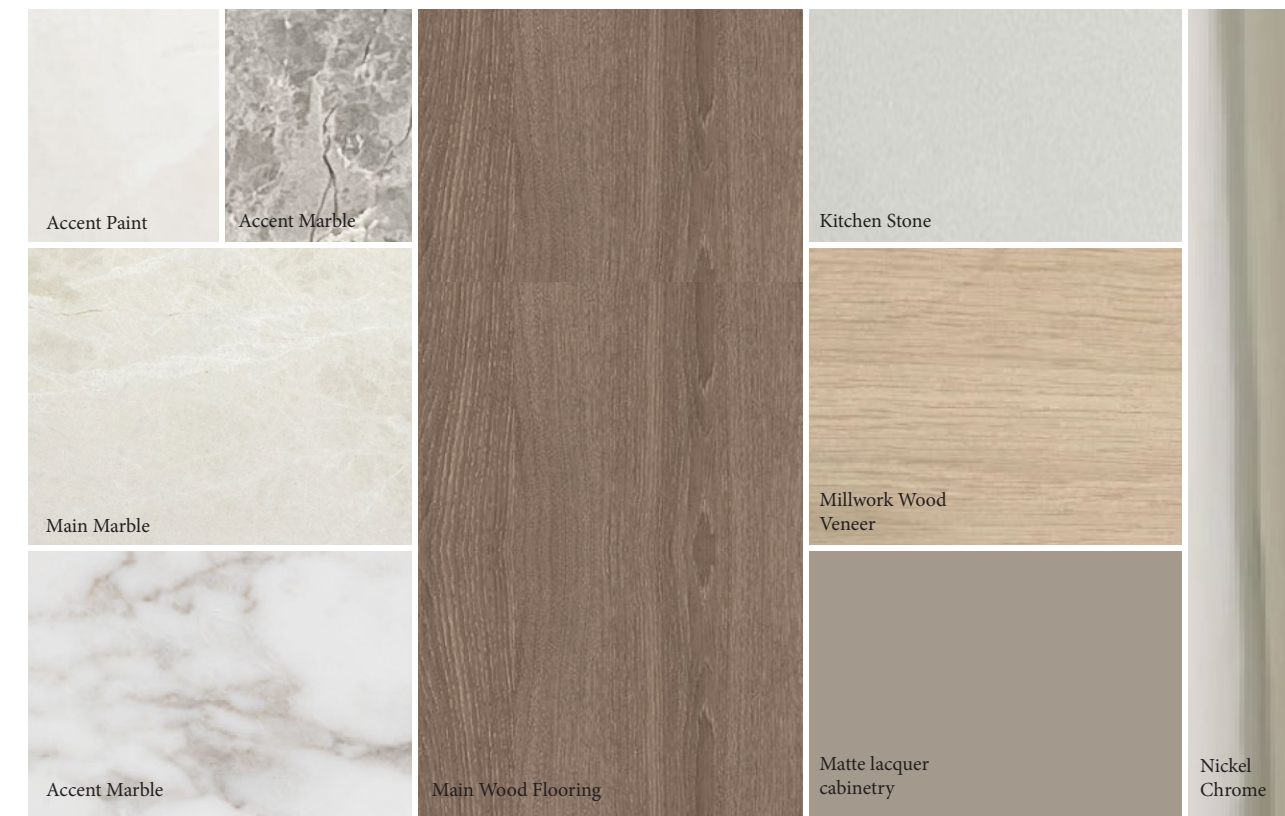
- NOT INCLUDED

12. CABINETS, WARDROBES & WIC

- INCLUDED



LIGHT SCHEME



DARK SCHEME

All materials are tentative. Information is subject to change without notice depending on availability of the specified materials.



EAGLE
HILLS
ABU DHABI