



# NOURAN LIVING

BY ALDAR







# ALDAR CRAFTING VIBRANT COMMUNITIES



At Aldar, our homes are just the beginning of meticulously crafted lifestyles. Our communities serve as canvases for inspiration and connection, reflecting our commitment to making life extraordinary.





# THIS IS ABU DHABI

Abu Dhabi is a city with a difference. Its natural beauty, inspiring heritage, and dynamic business landscape are complemented by a bold and exciting cultural scene that draws people from all over the world. Art, design, style, and creativity—it all starts here.





# SAADIYAT ISLAND LIVING

Home to white-sand beaches, as well as the Zayed National Museum, Guggenheim Abu Dhabi, Louvre Abu Dhabi and Saadiyat Grove; this is a lifestyle destination that's redefining the UAE's role in global culture, creativity and natural beauty.



---

# DISCOVER THE PULSE OF SAADIYAT MARINA DISTRICT





# OUR LIVING BRAND

A revolutionary approach to real estate where design fosters community spirit. Spaces transform into places of engagement, nurturing meaningful human connections.

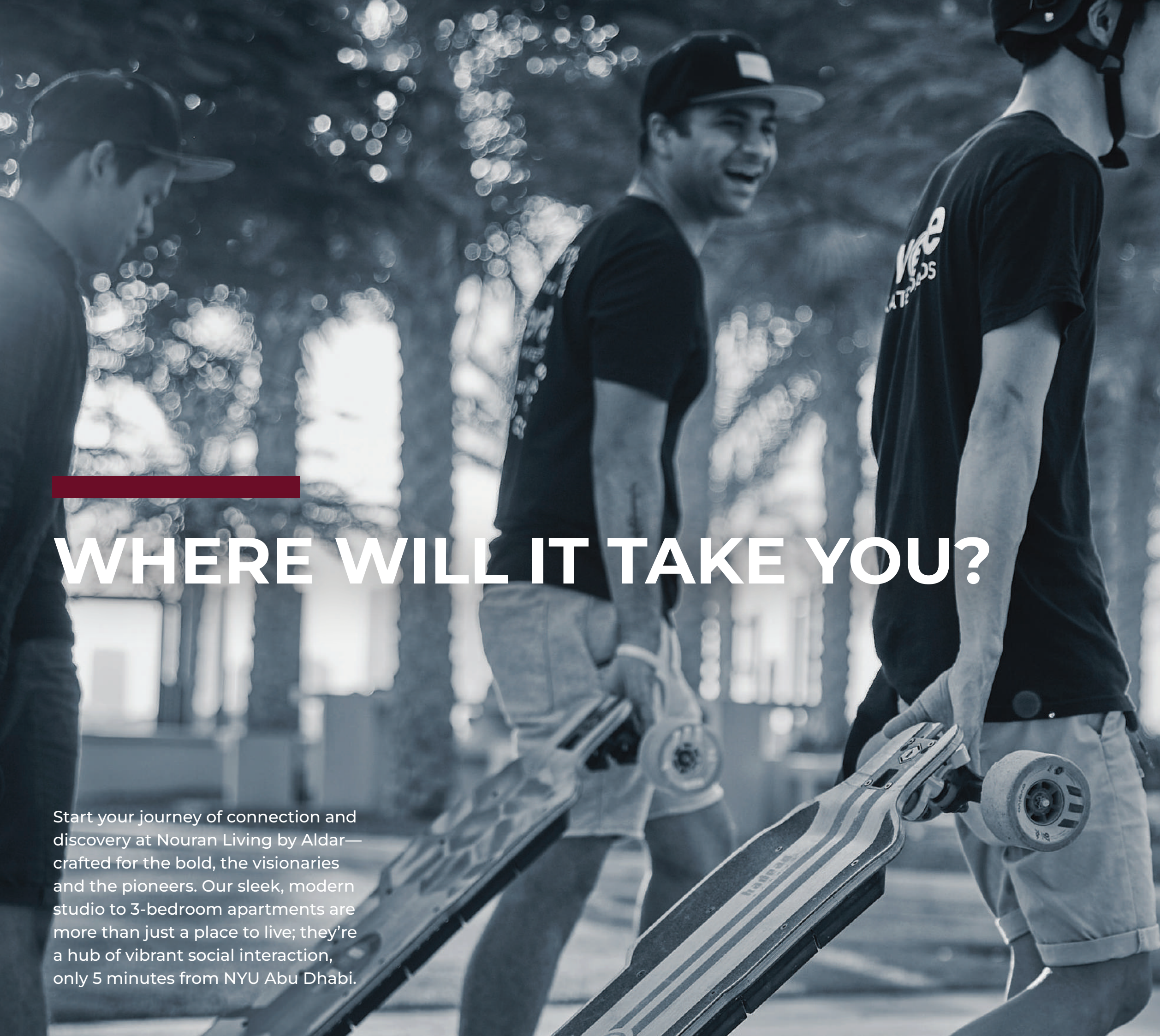




# INTRODUCING NOURAN LIVING BY ALDAR







# WHERE WILL IT TAKE YOU?

Start your journey of connection and discovery at Nouran Living by Aldar—crafted for the bold, the visionaries and the pioneers. Our sleek, modern studio to 3-bedroom apartments are more than just a place to live; they're a hub of vibrant social interaction, only 5 minutes from NYU Abu Dhabi.





# A NEW URBAN RHYTHM



Discover modern, communal spaces with world-class amenities, each one buzzing with the promise of connection.



# YOUR MODERN SANCTUARY



From sophisticated studios to elegant 3-bedroom apartments, secure your slice of modernity within a vibrant community.





**GATHER  
ENGAGE  
REJUVENATE**







**OUR WORLD-CLASS  
AMENITIES ARE  
CANVASES FOR  
CONNECTION  
AND CREATIVITY**

THE COURTYARD

HUB LOUNGE

CYCLE VAULT

MULTIPURPOSE ROOM

INDOOR & OUTDOOR  
CHILDREN'S PLAY AREAS

THE OASIS (ADULTS'  
SWIMMING POOL)

THE SPLASH (KIDS'  
SWIMMING POOL)

STRIDE LANE

PADEL POINT

INDOOR & OUTDOOR GYM

CINELOUNGE

READING NOOK

COLLAB LOFT

SPORTS HALL





INDOOR & OUTDOOR GYM



PICTUREHOUSE CINEMA  
PLAYING NOW  
THE MAN WHO KNEW TOO MUCH  
THE BABY DRIVER  
ALL EYES ON ME  
INFERNO  
COMES AT NIGHT  
COMING NOW FOR  
THE PLANET OF THE APES  
ON 25MM 28TH JULY  
CONVERSATION MORE







**FOR THE  
MEETING  
OF MINDS**

The Courtyard is a lush, green podium that is the social heartbeat of Nouran Living by Aldar.



**COOL OFF  
DREAM BIG**







**ENTER NEW  
HORIZONS**





CHILDREN'S PLAY AREA



READY  
SET  
ZIP




With the e-scooter station right in the lobby, your next adventure is just a moment away.





A close-up, low-angle shot of a red electric car's front left side. A white charging cable is plugged into the car's charging port. The car is parked on a paved surface next to a dark, textured planter containing a green plant. The background is a dark, vertically-slatted wall. The lighting is warm and directional, coming from the right, creating strong highlights and shadows.

**ALWAYS  
ENERGISED**

A woman with long dark hair and bangs, wearing a bright yellow jacket and aviator sunglasses, is smiling broadly. She is pointing her right hand upwards. The background is a bright, slightly blurred outdoor setting with a building and some greenery visible.

Embrace sustainability with EV  
parking and charging facilities at  
your convenience.



# GET IN THE GAME



The padel court's the battleground for friendly rivalry.







With a spacious lobby, social rooms and play areas, you can connect or disconnect anywhere.

**TIME TO  
KICK BACK**

*Act is in  
the house*





**DESIGN THAT SPEAKS VOLUMES**





**CRAFTED FOR COMFORT  
DESIGNED FOR LIVING**





**WHERE EVERY DETAIL IS A  
CONVERSATION STARTER**





## SUSTAINABILITY FEATURES

---

PEARL 3 ESTIDAMA

---

FITWELL 3-STAR CERTIFICATION

---

SUPPORTING SOCIAL INCLUSION  
BY PROVIDING OPPORTUNITIES  
THAT ENHANCE USABILITY

---



# TYPICAL FLOOR PLAN



**STUDIO**

Disclaimer: This plan is reproduced for illustrative purposes as an example of a typical plot layout and Aldar makes no representation or warranty in relation to any of the information shown.



# TYPICAL FLOOR PLAN



**1 BEDROOM - TYPE A**



**1 BEDROOM - TYPE B**



# TYPICAL FLOOR PLAN



**1 BEDROOM - TYPE C**



**1 BEDROOM - TYPE D**

Disclaimer: This plan is reproduced for illustrative purposes as an example of a typical plot layout and Aldar makes no representation or warranty in relation to any of the information shown.



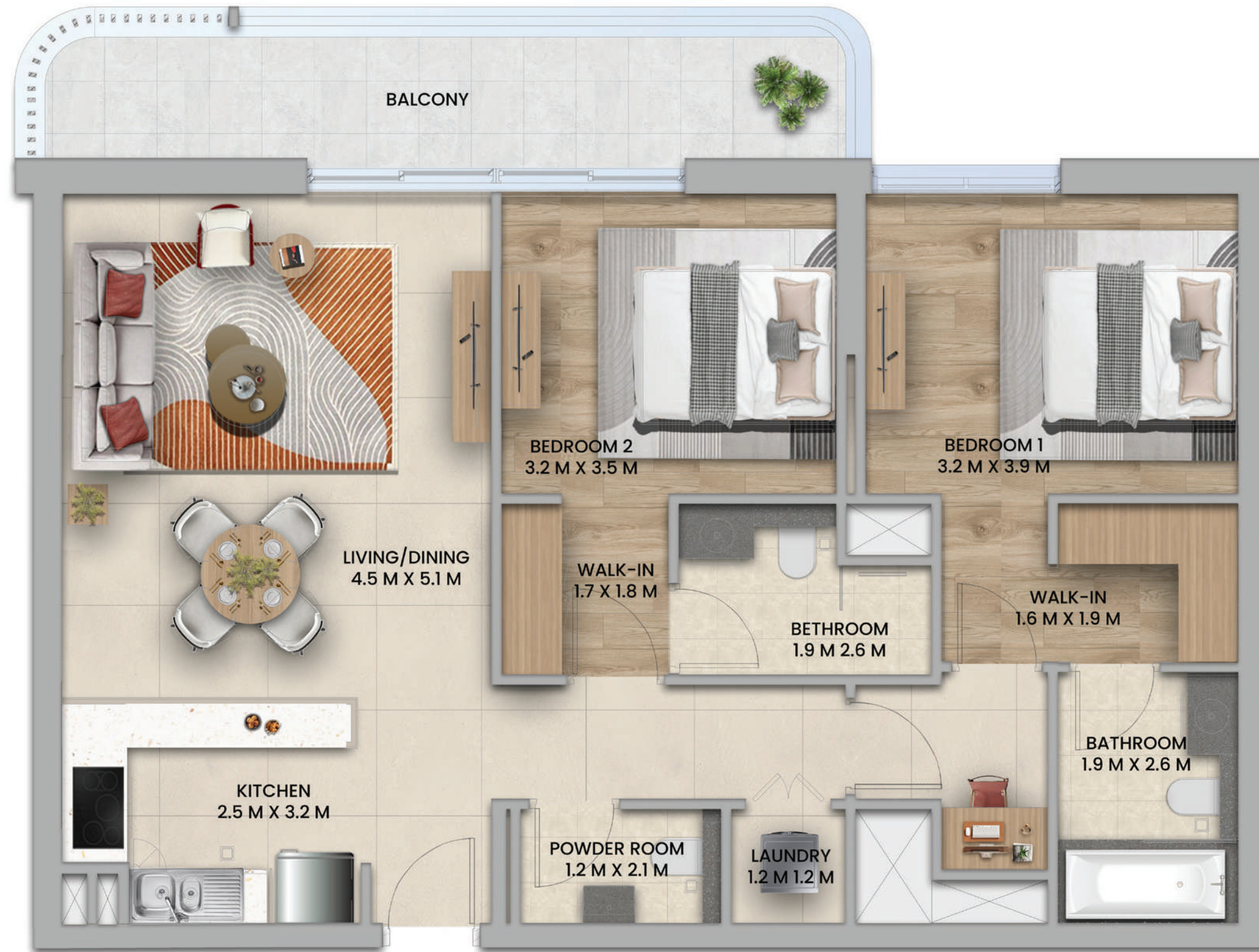
# TYPICAL FLOOR PLAN



**1 BEDROOM - TYPE E**



# TYPICAL FLOOR PLAN



**2 BEDROOM - TYPE 1**

Disclaimer: This plan is reproduced for illustrative purposes as an example of a typical plot layout and Aldar makes no representation or warranty in relation to any of the information shown.



# TYPICAL FLOOR PLAN



**2 BEDROOM - TYPE 2 + MAID**

Disclaimer: This plan is reproduced for illustrative purposes as an example of a typical plot layout and Aldar makes no representation or warranty in relation to any of the information shown.



# TYPICAL FLOOR PLAN



**2 BEDROOM - TYPE 3**

Disclaimer: This plan is reproduced for illustrative purposes as an example of a typical plot layout and Aldar makes no representation or warranty in relation to any of the information shown.



# TYPICAL FLOOR PLAN



**2 BEDROOM - TYPE 4**

Disclaimer: This plan is reproduced for illustrative purposes as an example of a typical plot layout and Aldar makes no representation or warranty in relation to any of the information shown.



# TYPICAL FLOOR PLAN



**3-BED + MAID**

Disclaimer: This plan is reproduced for illustrative purposes as an example of a typical plot layout and Aldar makes no representation or warranty in relation to any of the information shown.

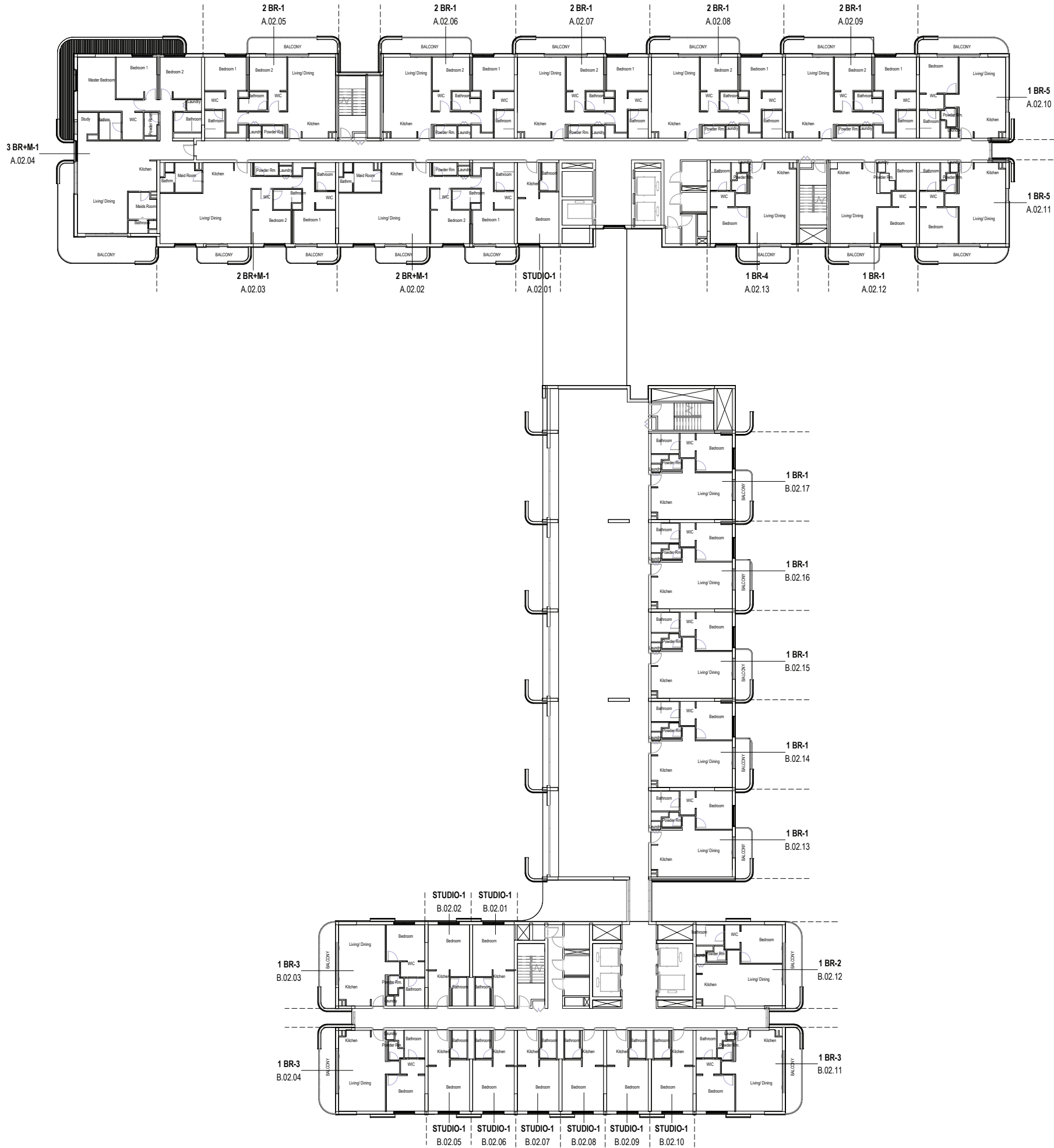


# LEVEL ONE





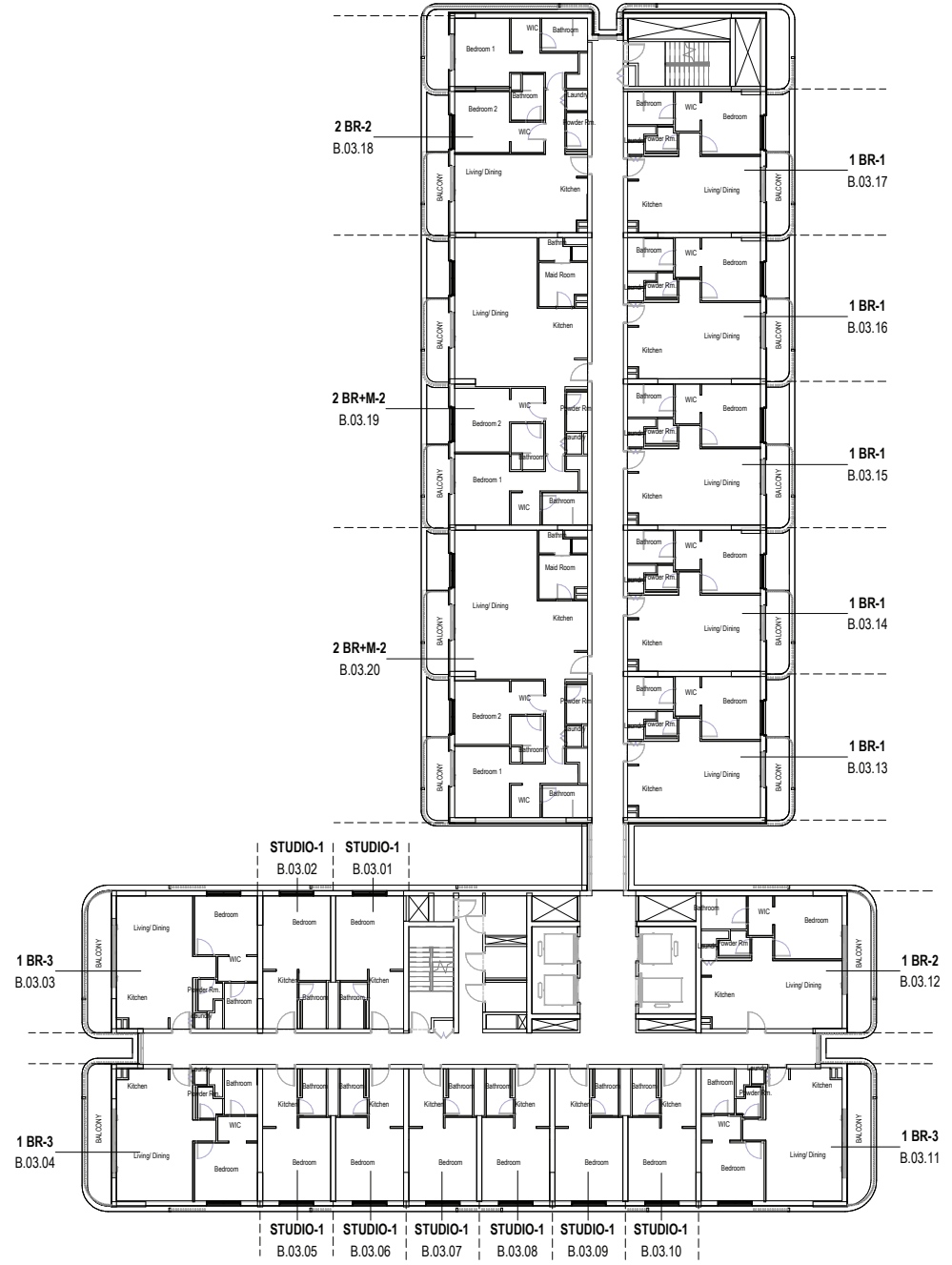
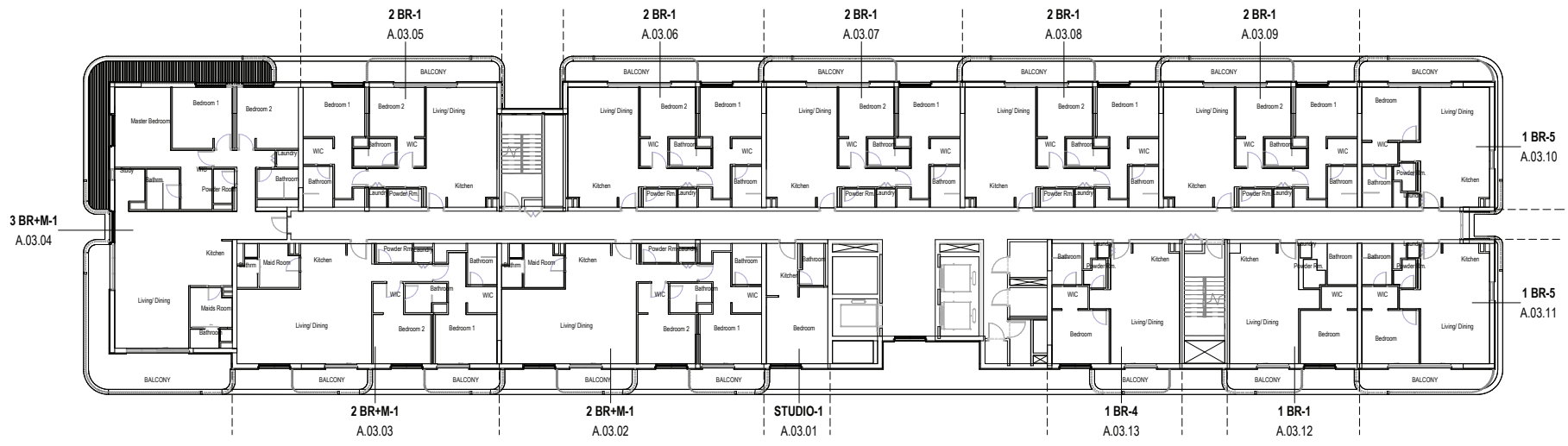
# LEVEL TWO



Disclaimer: This plan is reproduced for illustrative purposes as an example of a typical plot layout and Aldar makes no representation or warranty in relation to any of the information shown.



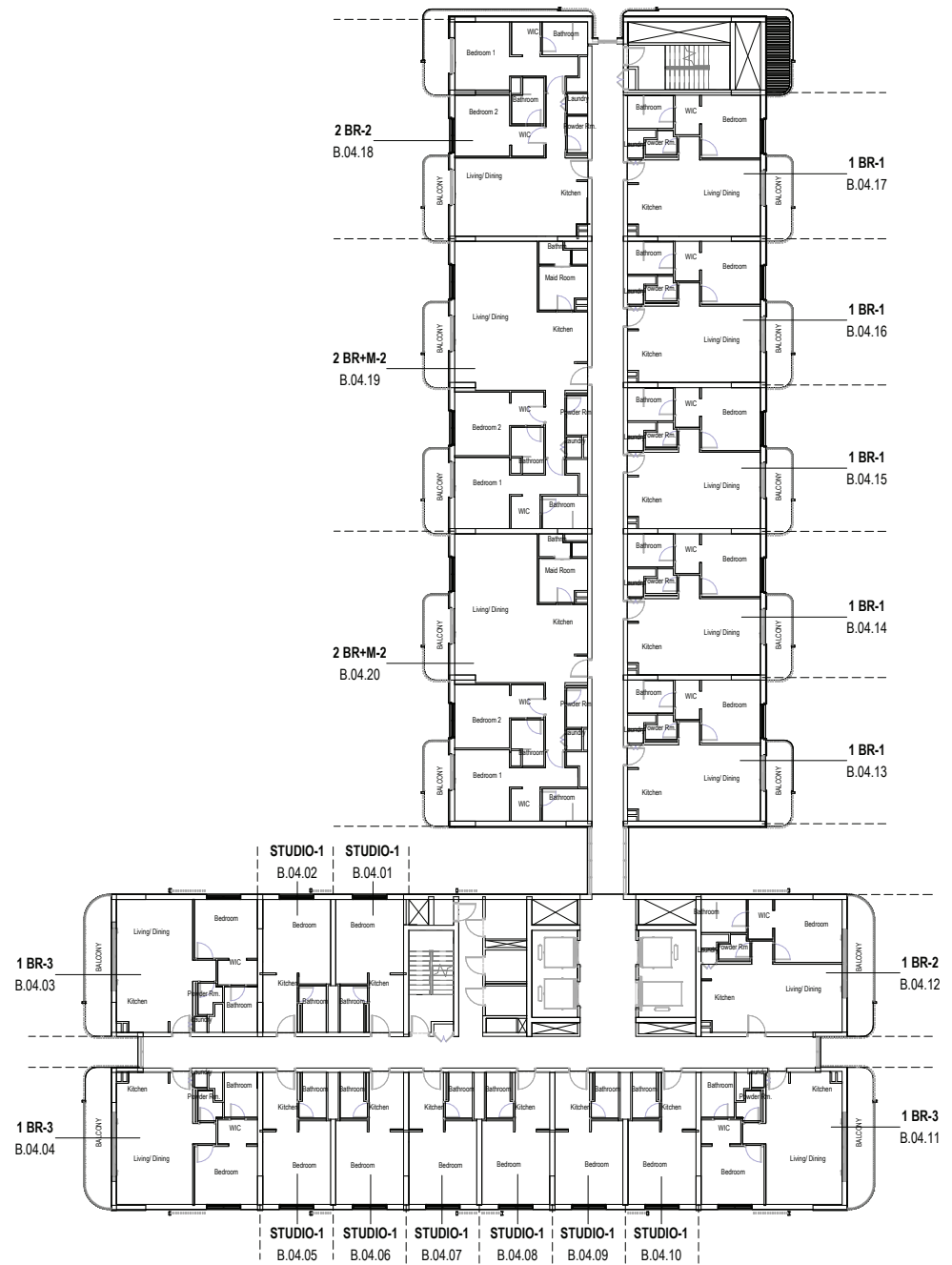
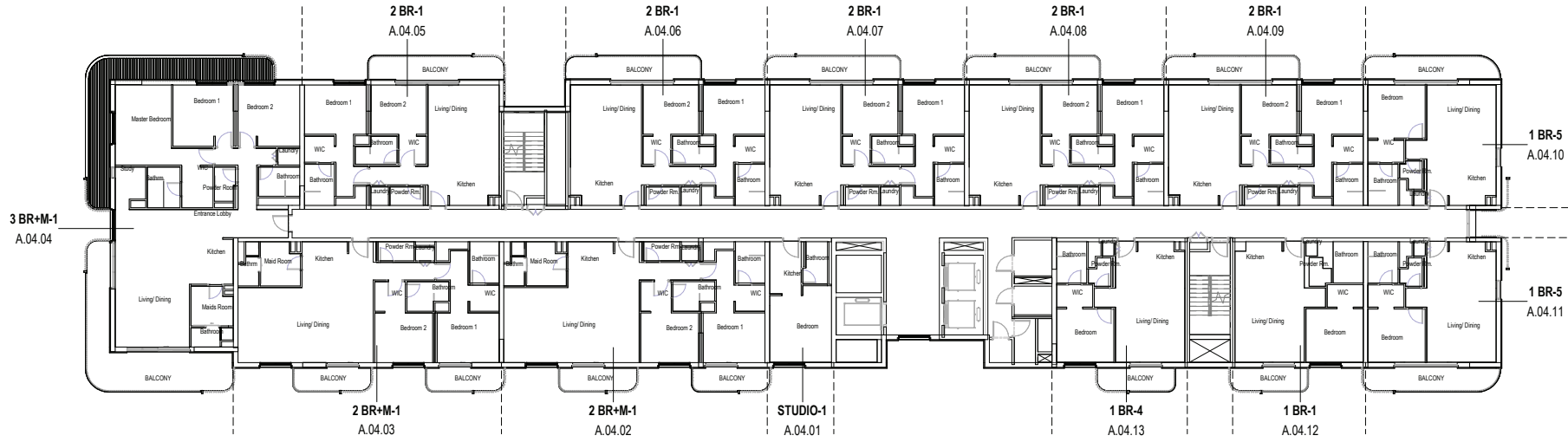
# LEVEL THREE



Disclaimer: This plan is reproduced for illustrative purposes as an example of a typical plot layout and Aldar makes no representation or warranty in relation to any of the information shown.



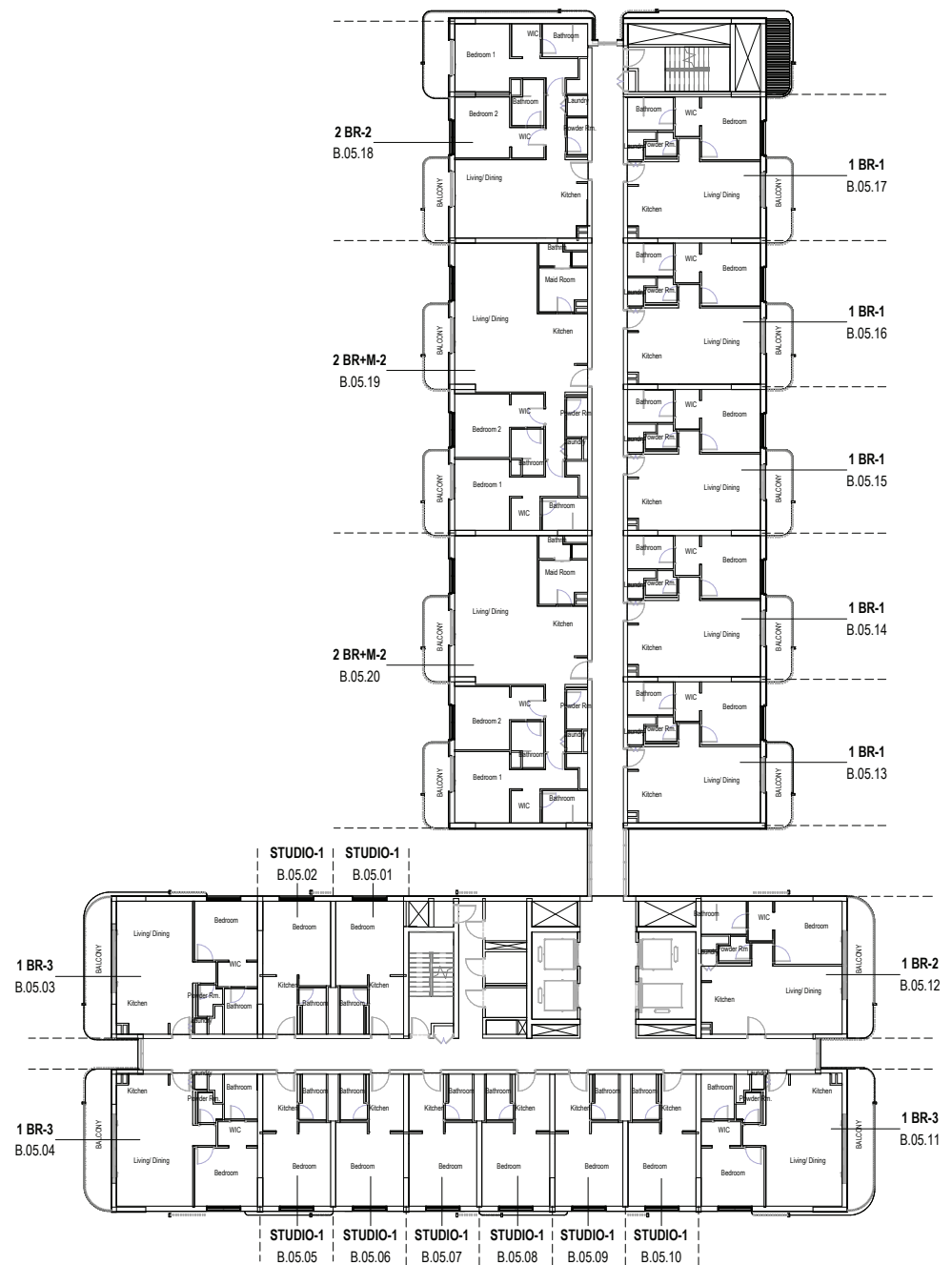
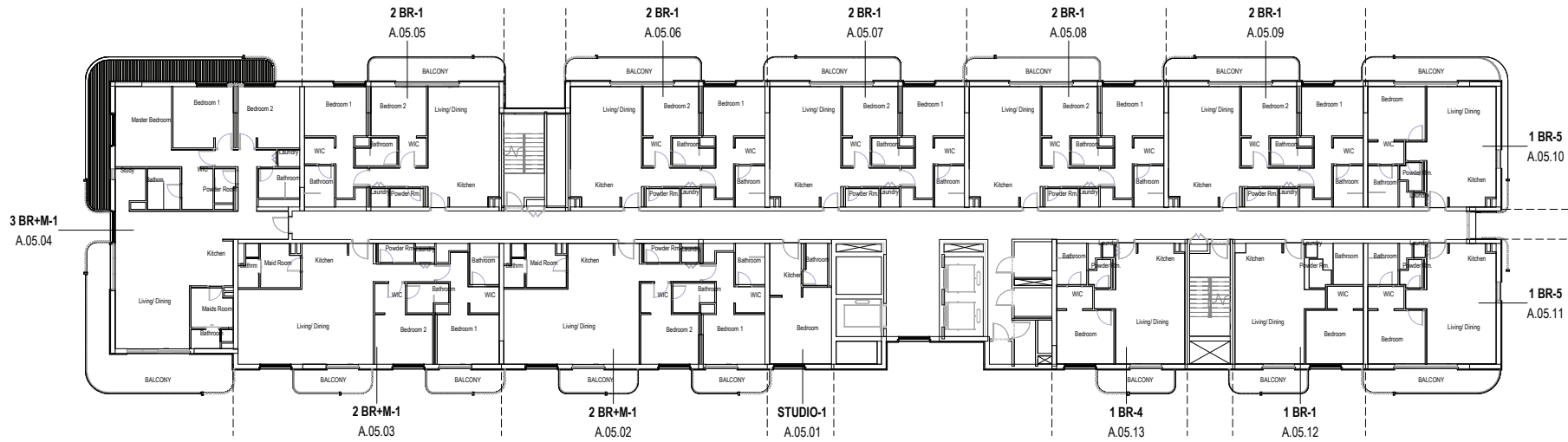
# LEVEL FOUR



Disclaimer: This plan is reproduced for illustrative purposes as an example of a typical plot layout and Aldar makes no representation or warranty in relation to any of the information shown.



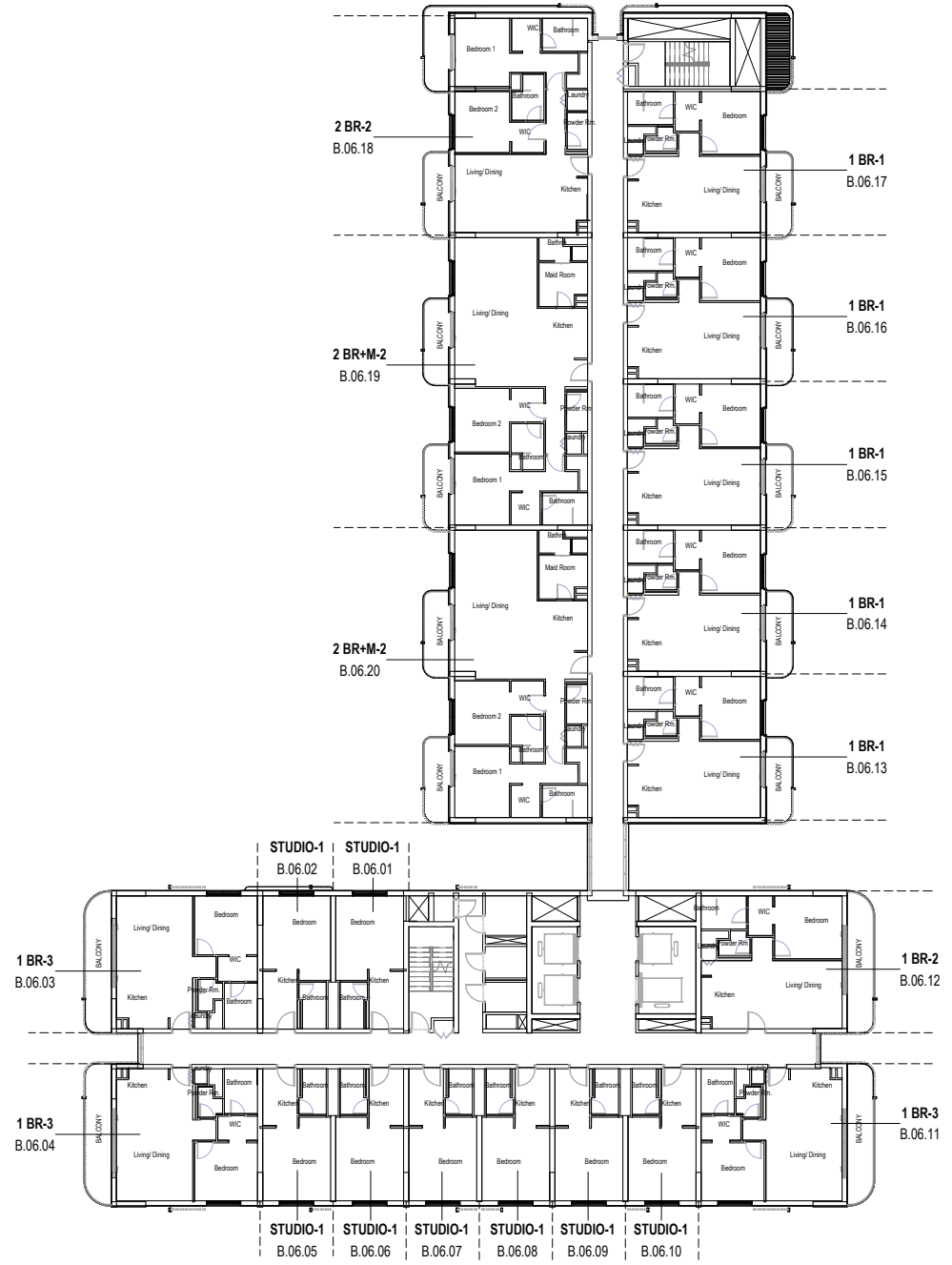
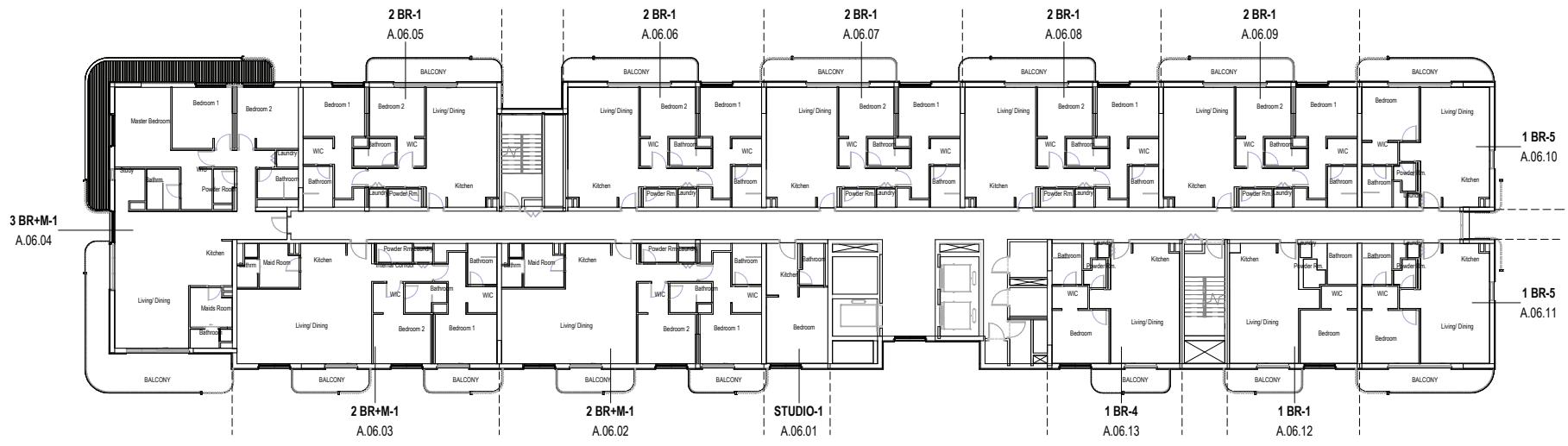
# LEVEL FIVE



Disclaimer: This plan is reproduced for illustrative purposes as an example of a typical plot layout and Aldar makes no representation or warranty in relation to any of the information shown.



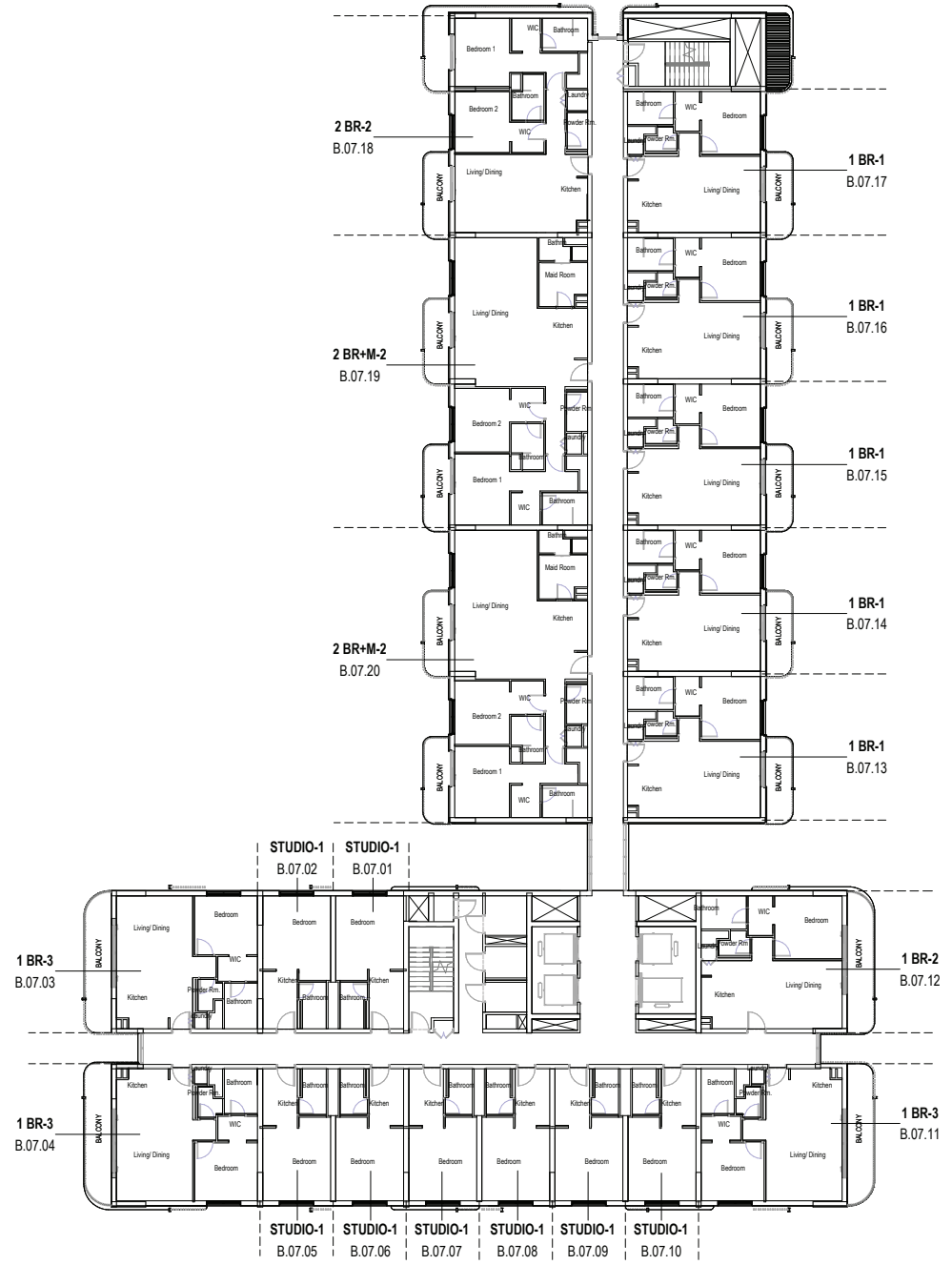
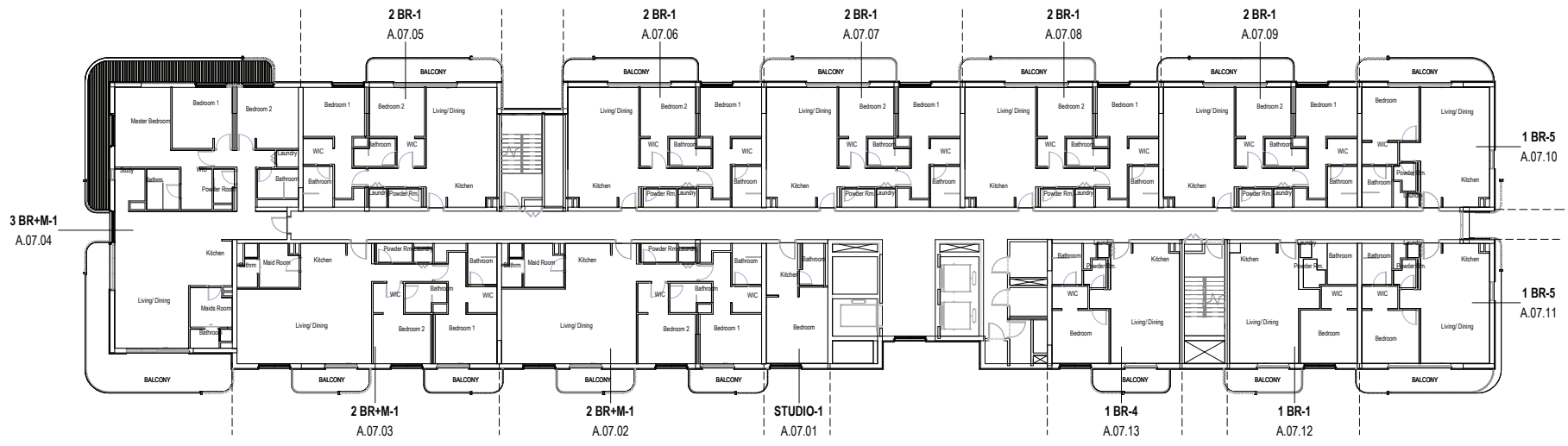
# LEVEL SIX



Disclaimer: This plan is reproduced for illustrative purposes as an example of a typical plot layout and Aldar makes no representation or warranty in relation to any of the information shown.



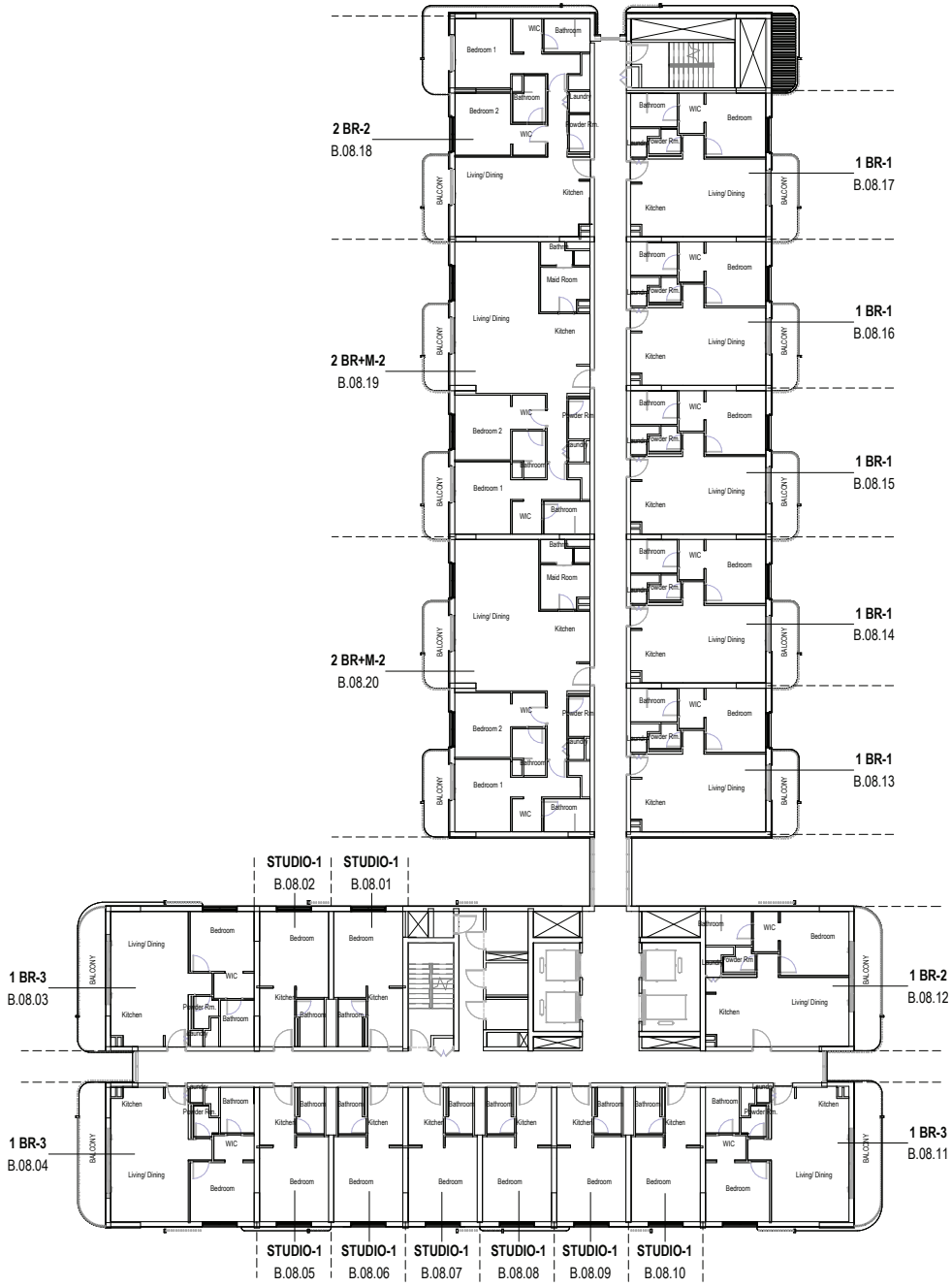
# LEVEL SEVEN



Disclaimer: This plan is reproduced for illustrative purposes as an example of a typical plot layout and Aldar makes no representation or warranty in relation to any of the information shown.



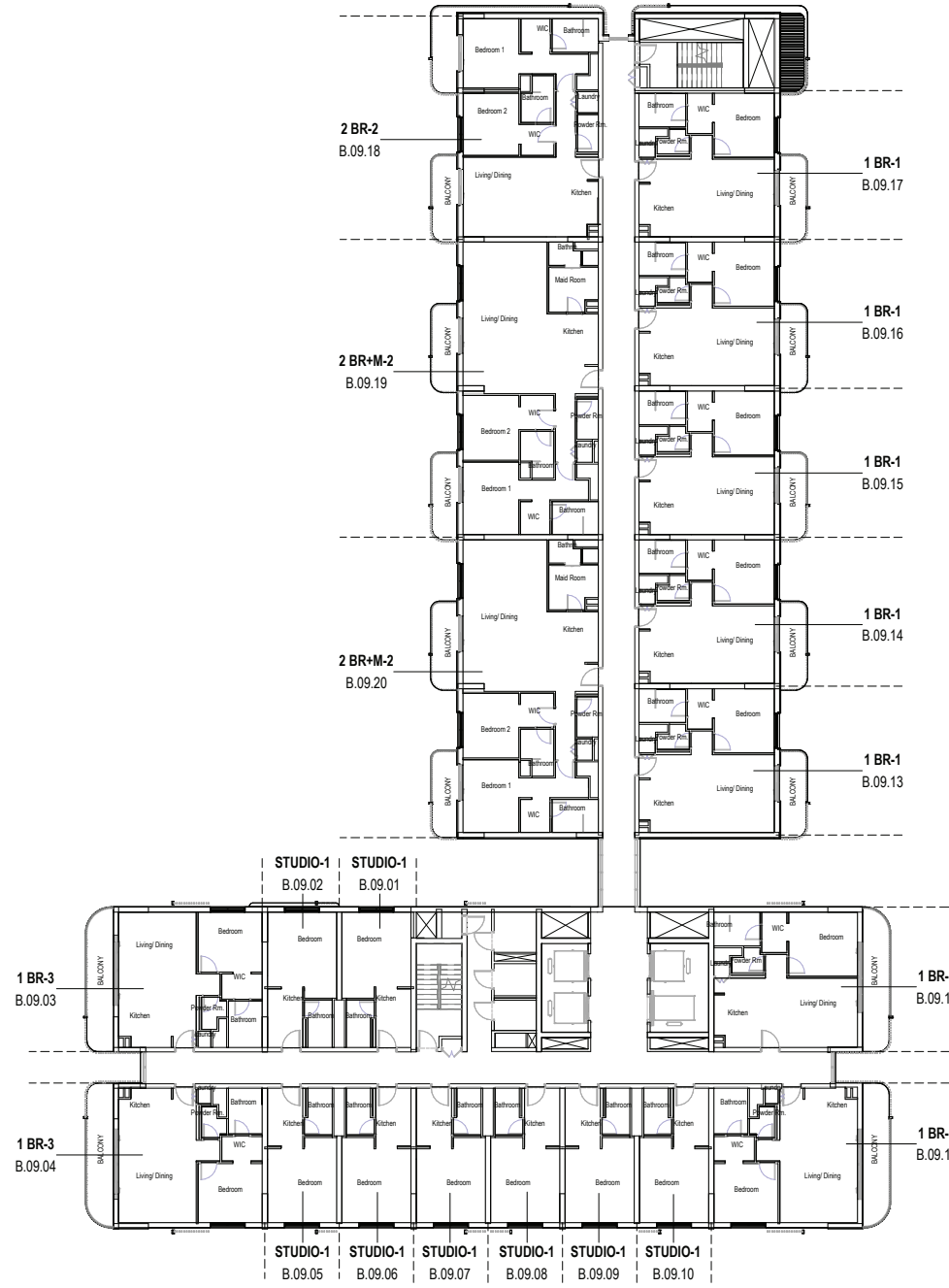
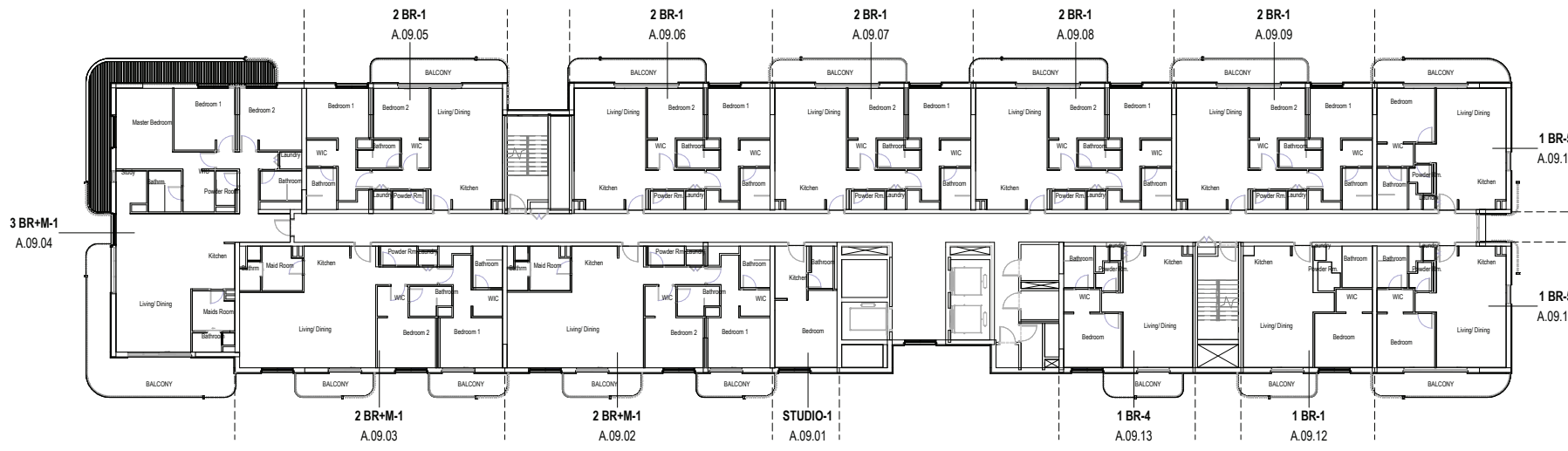
# LEVEL EIGHT



Disclaimer: This plan is reproduced for illustrative purposes as an example of a typical plot layout and Aldar makes no representation or warranty in relation to any of the information shown.



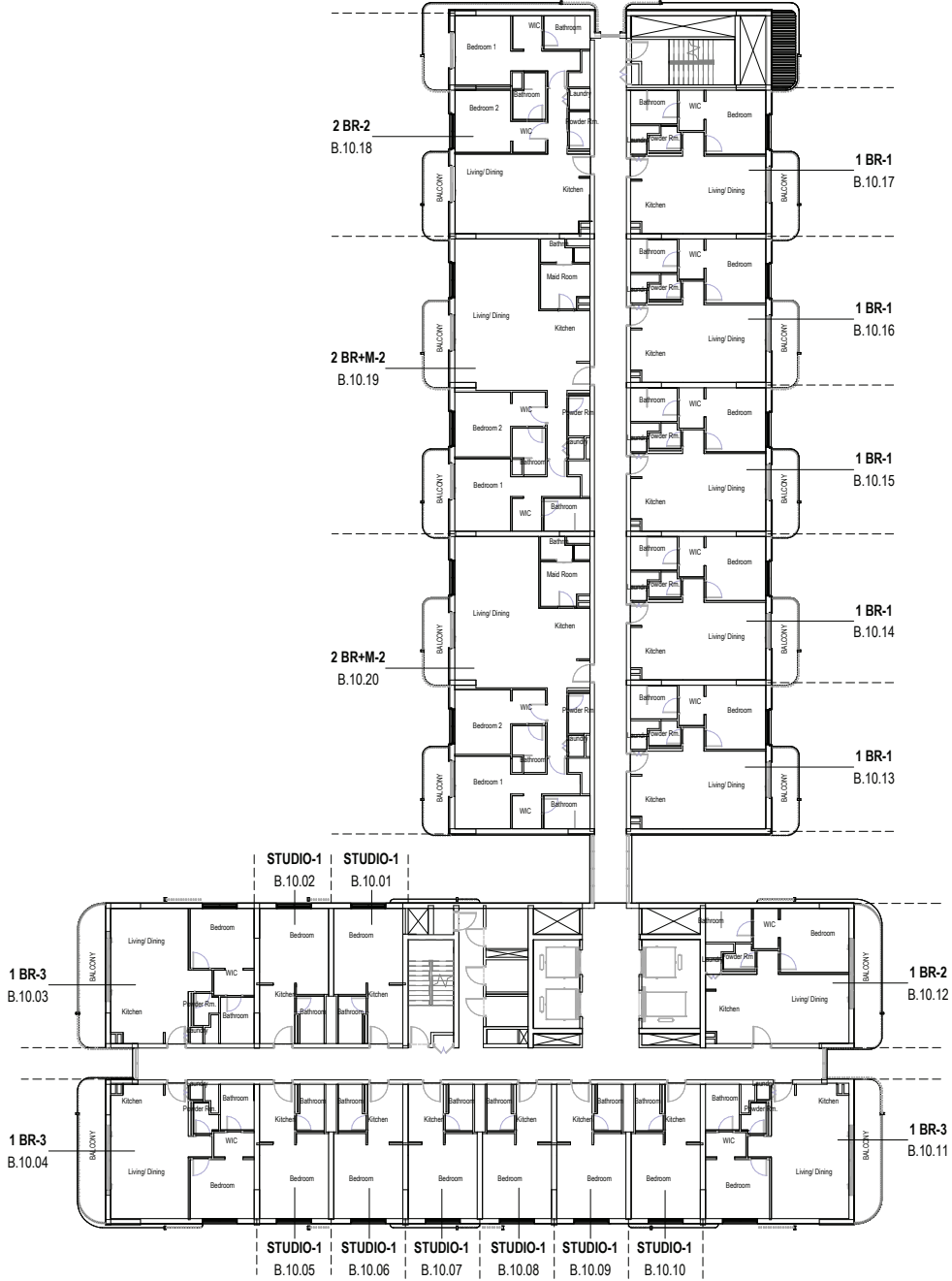
# LEVEL NINE



Disclaimer: This plan is reproduced for illustrative purposes as an example of a typical plot layout and Aldar makes no representation or warranty in relation to any of the information shown.



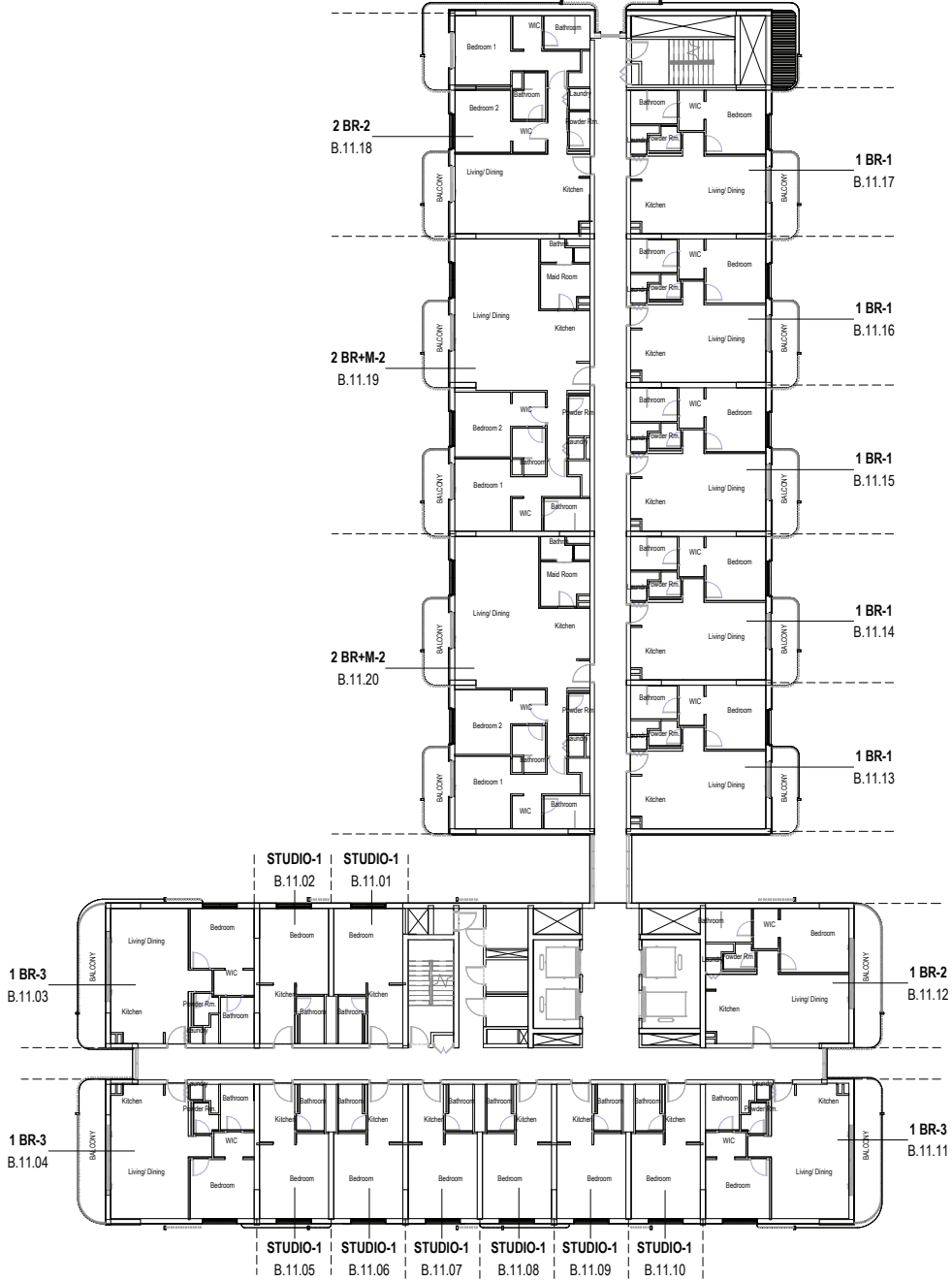
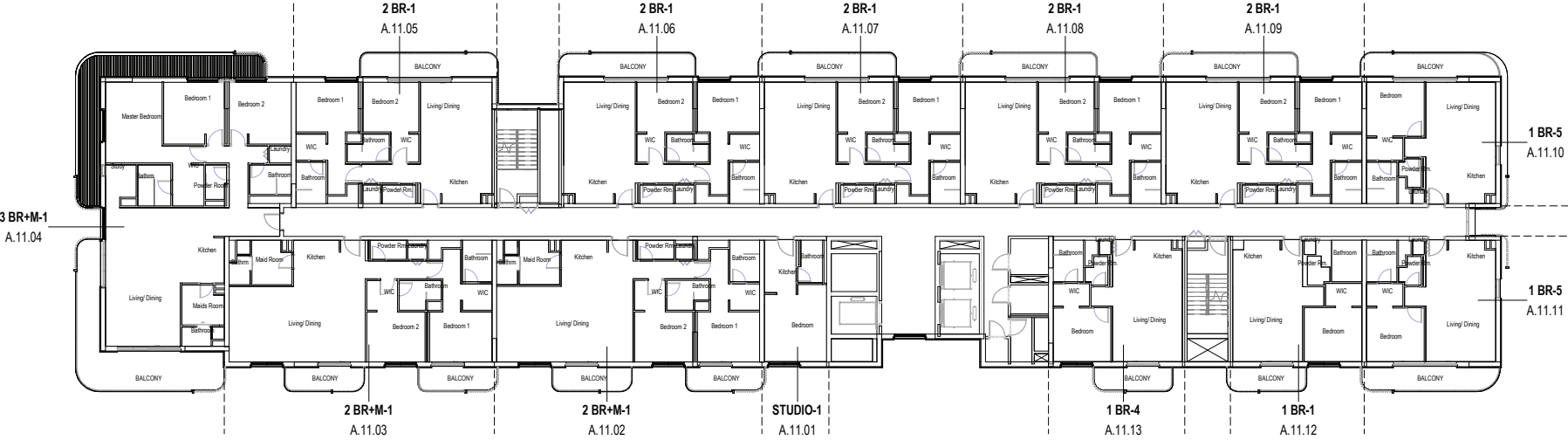
# LEVEL TEN



Disclaimer: This plan is reproduced for illustrative purposes as an example of a typical plot layout and Aldar makes no representation or warranty in relation to any of the information shown.



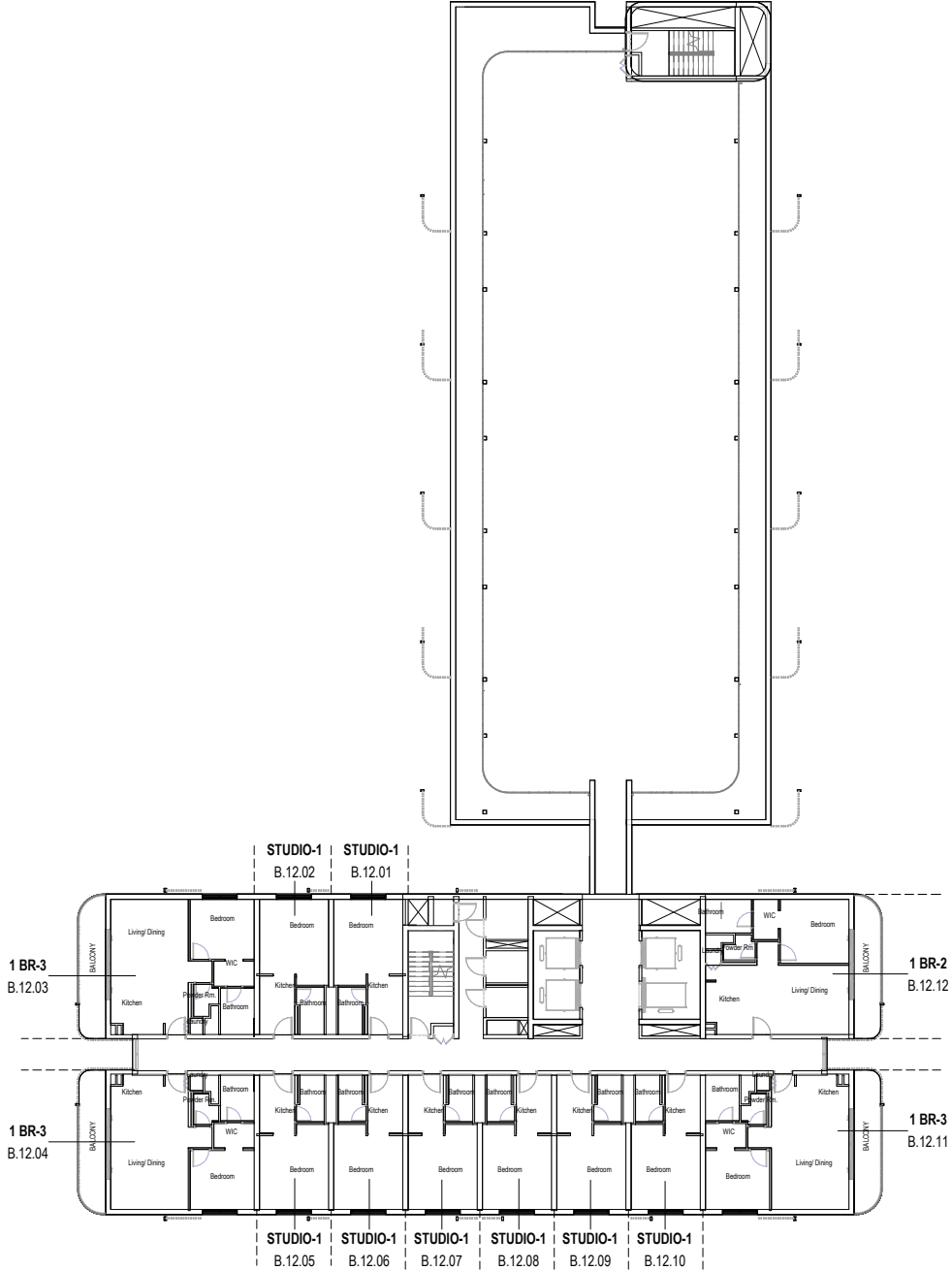
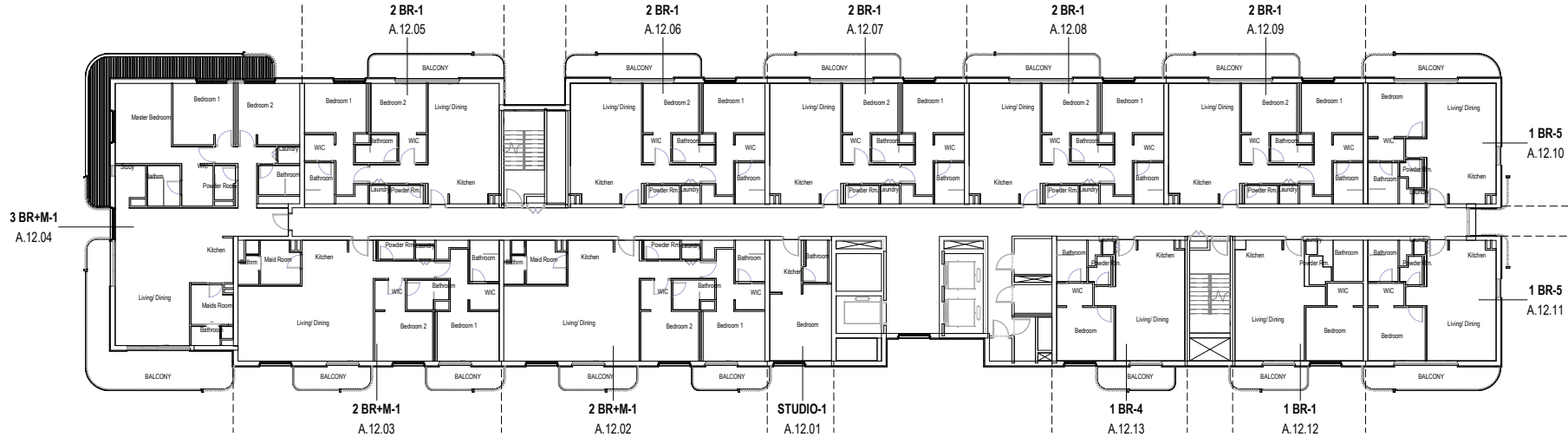
# LEVEL ELEVEN



Disclaimer: This plan is reproduced for illustrative purposes as an example of a typical plot layout and Aldar makes no representation or warranty in relation to any of the information shown.



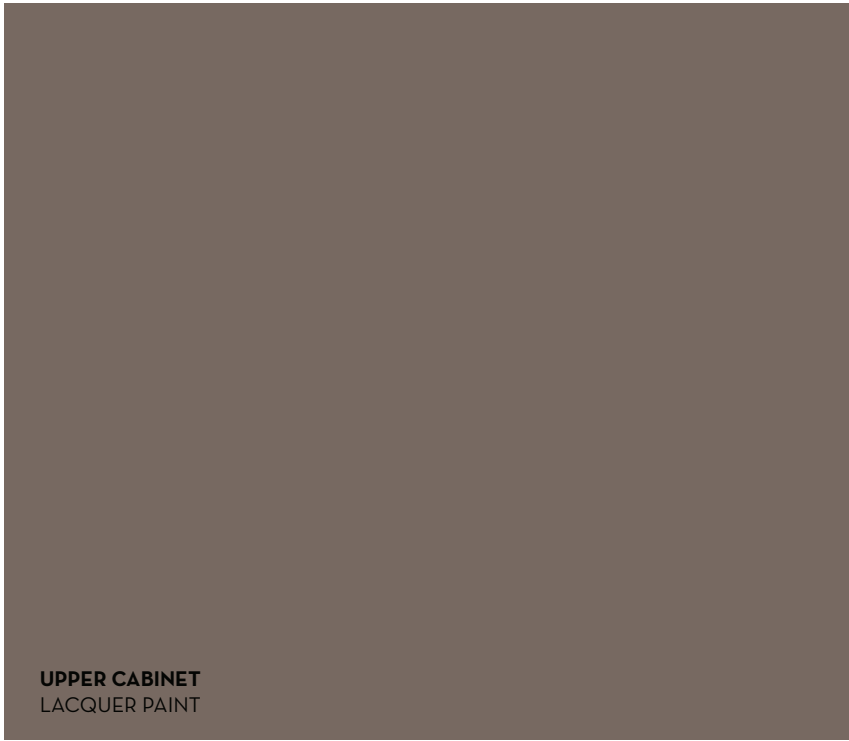
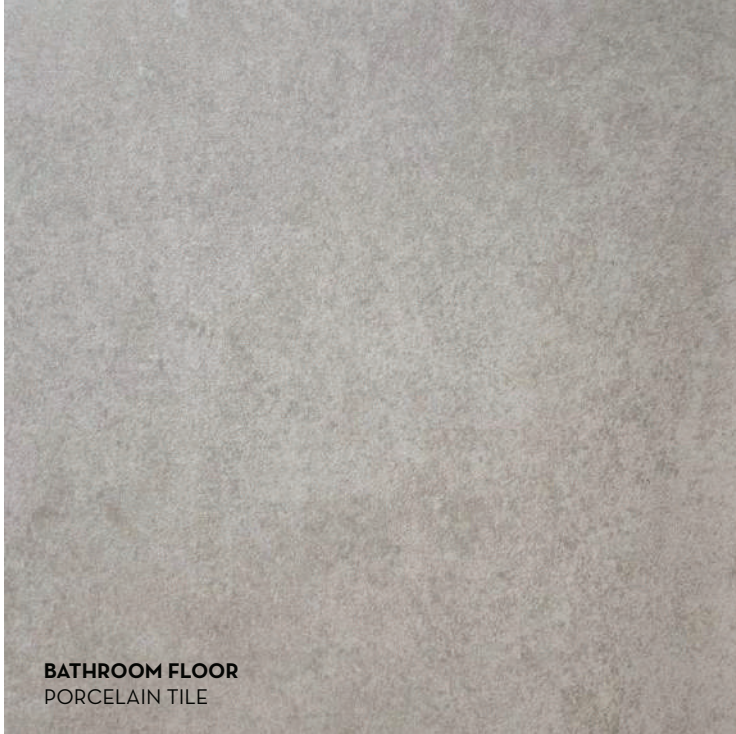
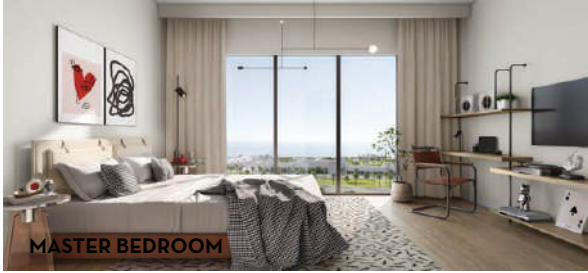
# LEVEL TWELVE



Disclaimer: This plan is reproduced for illustrative purposes as an example of a typical plot layout and Aldar makes no representation or warranty in relation to any of the information shown.



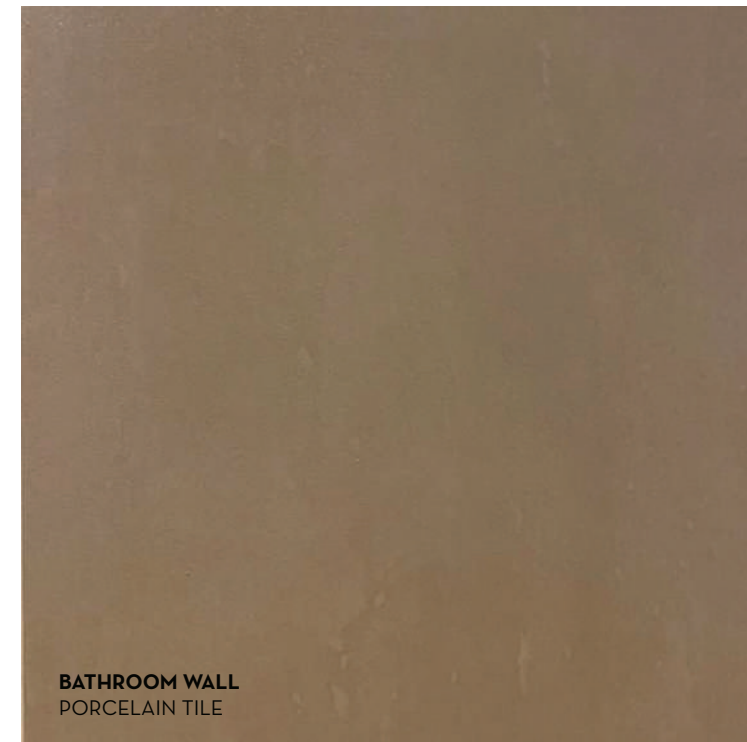
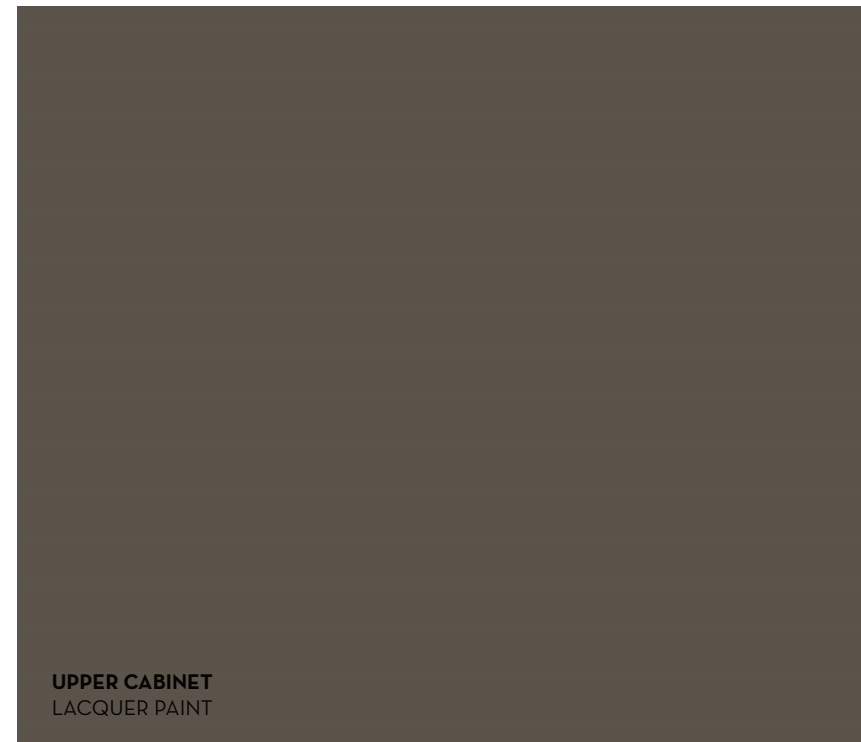
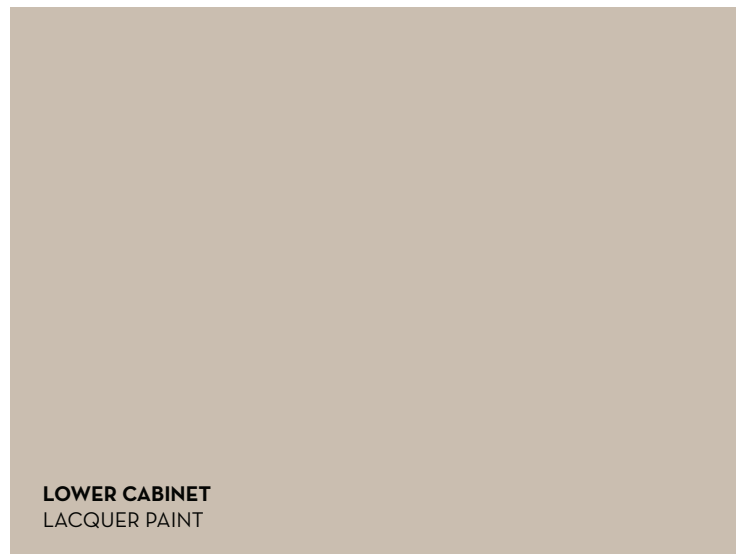
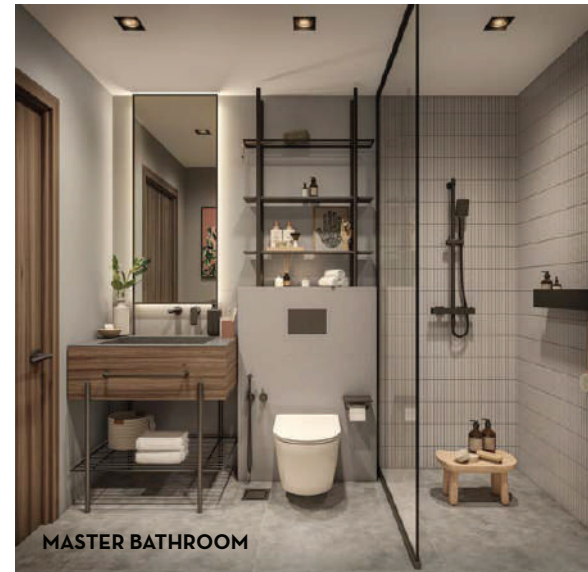
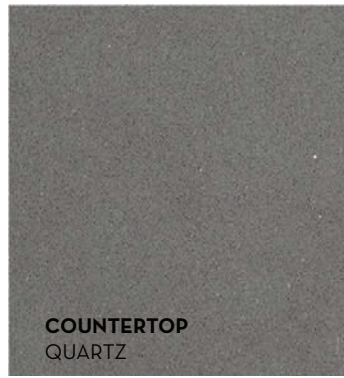
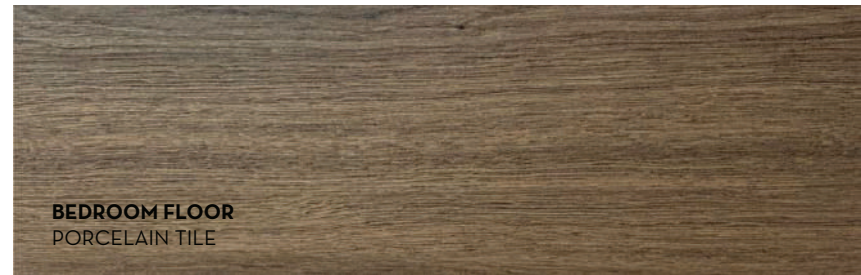
# LIGHT SCHEME



# FINISHES



# DARK SCHEME



FINISHES



## ZAYED NATIONAL MUSEUM

The magnificent centrepiece of the Cultural District celebrates the life of our founding father and tells the story of the UAE. A precious link between ancient past and modern day.



## GUGGENHEIM ABU DHABI

The first museum of its kind in the region, with a vision to spark interest in contemporary art, and provide a powerful new creative platform for artists around the world.







## THE ABRAHAMIC FAMILY HOUSE

The first-ever interfaith community in the UAE, where three religious spaces are connected, to encourage acceptance between Christianity, Islam and Judaism.

---



## NATURAL HISTORY MUSEUM ABU DHABI

This is where the history of life on Earth is told through unique collections and exhibitions, while scientists tackle some of the biggest challenges facing the world today.

---



SOUL BEACH  
MAMSHA AL SAADIYAT

A new private beach facility on Abu Dhabi's stunning Saadiyat island. Soul Beach is a 1km stretch of prime Saadiyat coastline, travel brochure views, and mesmerising blues.







ALDAR.COM  
800 ALDAR