



THE  
source

# LIVE WELL WITH ALDAR

As one of the most trusted and recognised real estate lifestyle developers in the UAE, it's our duty to nurture wellbeing in every Abu Dhabi home. Which is why we do more than build properties.

We strive to shape communities that enrich people's lives, in homes that brim with health, happiness, and everything they love.



**AED 11.2 BN**  
REVENUE

**AED 3.1 BN**  
NET PROFIT

**AED 7 BN**  
ALDAR  
DEVELOPMENT  
REVENUE

**AED 4.1 BN**  
ALDAR  
INVESTMENT  
REVENUE

**AED 14.4 BN**  
DEVELOPMENT  
SALES

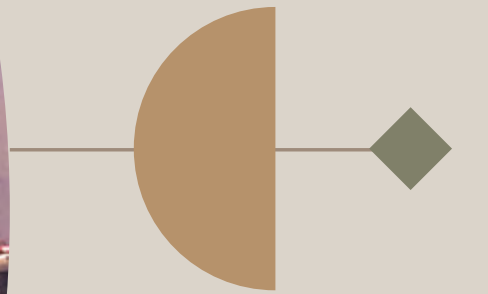
**AED 11.3 BN**  
13 COMPLETED  
ACQUISITIONS

**AED 5.1 BN**  
APOLLO  
TRANSACTION

**AED 32 BN**  
ASSETS UNDER  
MANAGEMENT

# THIS IS ABU DHABI

With its tranquil coastline, vibrant cultural scene, inspiring heritage and dynamic business landscape, Abu Dhabi is a city of balance. A place that offers people from all over the world a well-rounded lifestyle and the chance to achieve complete wellbeing.



# SAADIYAT ISLAND LIVING

Wellbeing begins here, on a natural island complete with turquoise waters, white-sand beaches and enriching experiences on every corner. For those looking for another kind of enlightenment, the inspiring Cultural District is home to Zayed National Museum, Guggenheim Abu Dhabi, Louvre Abu Dhabi and Saadiyat Grove. A lifestyle destination that is redefining the UAE's role in global culture and holistic health.





# A GROVE LIKE NO OTHER

Open your mind to inspiration at Saadiyat Grove. An ever-evolving, ever-invigorating destination at the heart of the island that makes pedigreed art and culture a part of life. Interactive artworks surround you, exquisite style is reflected through every window, and the world's most iconic collection of museums and galleries are yours to explore.



# ZAYED NATIONAL MUSEUM

The magnificent centrepiece of the Cultural District celebrates the life of our founding father and tells the story of the UAE. A precious link between ancient past and modern day.





## GUGGENHEIM ABU DHABI

The first museum of its kind in the region, with a vision to spark interest in contemporary art, and provide a powerful new creative platform for artists around the world.



# LOUVRE ABU DHABI

An architectural masterpiece and international icon,  
where treasures from near and far, past, present and  
future, are admired together under a rain of light.





# THE ABRAHAMIC FAMILY HOUSE

The first-ever interfaith community  
in the UAE, where three religious  
spaces are connected, to encourage  
acceptance between Christianity, Islam  
and Judaism.





## NATURAL HISTORY MUSEUM ABU DHABI

This is where the history of life on Earth is told through unique collections and exhibitions, while scientists tackle some of the biggest challenges facing the world today.



# SOUL BEACH, MAMSHA AL SAADIYAT

A new private beach facility on Abu Dhabi's stunning Saadiyat island. Soul beach is a 1km stretch of prime Saadiyat coastline, travel brochure views, and mesmerising blues.





WELCOME  
TO WHOOP

As a resident of The Source, you can track your recovery, sleep, training, and health 24/7, with a 2-year subscription to WHOOP; the personalised wellness coach on your wrist.

◆◆

WHOOP®



POWER UP WITH  
TECHNOGYM

Push your limits with access to the best-in-class gym equipment, fitness services and exercise classes from Technogym.

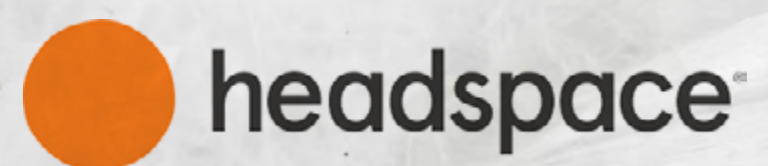
◆◆

TECHNOGYM®

The Wellness Company

## CLEAR YOUR HEADSPACE

Be kind to your mind with a subscription to Headspace. The guided meditation app designed to help you sleep better, breath better and make every day happier.



## HEALTHY LIVING BY BODYTREE

Your dedicated wellness concierge awaits you. Tailor your nutrition, practice your yoga, experience the healing hands of Reiki or Reflexology, or unwind with a massage courtesy of local wellbeing experts, bodytree wellness.





↑  
**Zaya Nurai Island**  
15 Min boat ride

THE  
**source**

GUGGENHEIM  
ABU DHABI

SAADIYAT  
GROVE

LOUVRE ABU DHABI

SHEIKH ZAYED  
NATIONAL  
MUSEUM

CULTURAL  
DISTRICT

MAMSHA AL SAADIYAT

THE ST. REGIS SAADIYAT ISLAND RESORT

JAWAHER SAADIYAT

MANARAT AL SAADIYAT

SAADIYAT ISLAND

MARINA  
DISTRICT

NYU ABU DHABI

SAADIYAT  
BEACH CLUB

SAADIYAT PUBLIC BEACH  
SAADIYAT BEACH GOLF CLUB

**ABU DHABI**

SARAYA

BURJ  
MOHAMMED  
BIN RASHID

WORLD  
TRADE CENTER

KHALIDIYA  
VILLAGE

BANIYAS  
TOWERS

AL MARYAH  
ISLAND

15 Min

THE BRIDGES

REEM CENTRAL PARK

MEERA

THE GATE &  
ARC TOWERS

REEM ISLAND

15 Min

AL MAMOURA

→  
**Yas Island**  
15 Min

**Abu Dhabi Airport**  
20 Min

**Dubai**  
70 Min

←  
**Corniche Rd, Abu Dhabi**  
20 Min

EMIRATES PALACE

AL BATEEN  
PARK



# THE NEW HOME OF WELLNESS

Our goal is to enrich the lives of people in Abu Dhabi in as many ways as we can. Which is why we've made a new commitment to wellbeing; introducing a series of developments with amenities and services that embody wellness holistically. Because wellness isn't something you do; it's something you live.



CONNECT WITH SERENITY  
AND SPLENDOUR





# THE source

## ALL IS WELL

Imagine yourself in a place where all is well. Now, make that feeling a reality at The Source. A new community at the heart of Abu Dhabi's Cultural District, tailored to offer holistic wellness. Cocooned in nature, connected to culture and brimming with vitality; here you'll rediscover your whole self.



FIND WONDER IN THE  
SPACES AROUND YOU

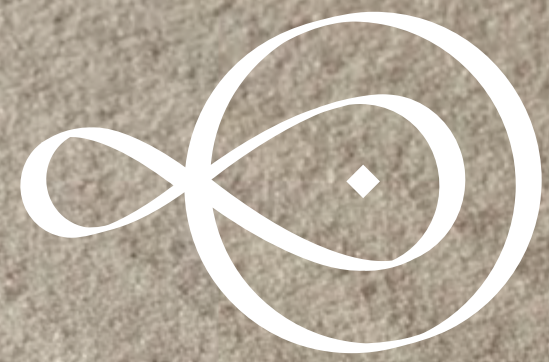


A WORLD BRIMMING  
WITH VITALITY



# FIND YOUR BALANCE

MIND



Take time and space to refocus your thoughts

BODY



Feel inspired to move and nourish your body

GROWTH



Feed your pursuits, passions and creativity

COMMUNITY



Connect with people who practice living well

# MEDITATION ZEN GARDEN

Let go of distractions in the quiet of the  
rooftop zen garden.

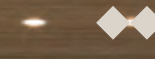


MIND

# FOCUS

## YOGA STUDIO

Channel your mental and physical energy on the mat.





# STRENGTH

## FITNESS HUB

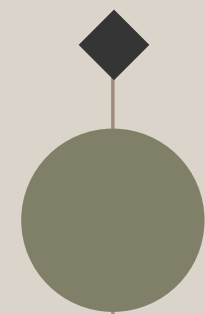
Reach your personal goals in an environment designed to push you.





## EXERCISE SQUASH COURT

Elevate your heartrate and your  
overall health on the court.



## RELAXATION THERMAL SUITE

Restore, revitalise and detoxify  
in the sauna and steam rooms.





# INSPIRATION

## THINKING SPACE

Get inspired in our co-working and exhibition space, where work and art flow seamlessly.



GROWTH



# IMAGINATION PLAYROOM

Let little minds expand in a space that  
encourages independence.



GROWTH

# EXPLORATION COURTYARD

Open your mind to the endless possibilities waiting just outside.



COMMUNITY

# CONNECTION

## LOBBY LOUNGE

Be part of a vibrant community,  
where wellness is a state of being.



COMMUNITY



# SMART & SUSTAINABLE

Designed responsibly, built from locally sourced materials and fitted with the latest sustainable features, your home will allow you to make a positive impact on the environment.

2 PEARL ESTIDAMA RATING



REDUCED CARBON EMISSIONS



GREEN BUILDING TECHNOLOGY



SUSTAINABLE MATERIALS



LOCALLY SOURCED MATERIALS



LOW-FLOW FIXTURES



TARGETTING WELL CERTIFICATION



EVERY INCH  
DESIGNED WITH YOUR  
WELLBEING IN MIND



AMENITIES  
DESIGNED FOR  
HOLISTIC  
HEALTH &  
WELLBEING





# AMENITIES

ROOFTOP ZEN GARDEN

YOGA SPACE

PANORAMIC PODIUM OVERLOOKING  
ZAYED NATIONAL MUSEUM

WELLNESS CONCIERGE

SQUASH COURTS

THERMAL SUITE WITH SAUNA & STEAM ROOM

YOGA & MEDITATION ROOM

GYMS

PANORAMIC POOL

CO-WORKING LOUNGE

MULTI-FUNCTIONAL SPACE

KIDS PLAY AREAS

CYCLING RACKS

ACCESS TO CULTURAL DISTRICT





## EMBRACE THE ELEMENTS

Feel grounded in a biophilia-inspired apartment that overlooks Saadiyat Grove's dancing fountains, just a short walk from the island's calming white-sand, clear water beaches.

# ACHIEVE HARMONY IN THE HOME

Apartments at The Source have been meticulously planned to enhance everyday life. With a choice of two colour schemes, as well as state-of-the-art features and exquisite finishings, your surroundings will never fail to lift your mood.

VIEWS OF ZAYED NATIONAL MUSEUM  
AND THE DANCING FOUNTAINS

◆  
AMBIENT LIGHTING

◆  
BEDROOMS DESIGNED FOR  
THE PERFECT NIGHT'S SLEEP

◆  
BUILT-IN WHITE GOODS





# FINISHES LIGHT SCHEME


## THROUGHOUT THE APARTMENT

-  EMULSION PAINT
-  TRAVERTINE PORCELAIN SLAB LIGHT BEIG
-  MIRAGE-ELYSIAN
-  LAMINATE-WHITE TOSSINI ELM
-  LAMINATE TAUPE GREY
-  RIBBED WOOD PANEL LIGHT BEIGE

## KITCHEN

-  EMULSION PAINT
-  TRAVERTINE PORCELAIN SLAB LIGHT BEIG
-  LAMINATE TAUPE GREY

## BATHROOM

-  EMULSION PAINT
-  MIRAGE-ELYSIAN
-  TRAVERTINE PORCELAIN SLAB LIGHT BEIG
-  RIBBED WOOD PANEL LIGHT BEIGE

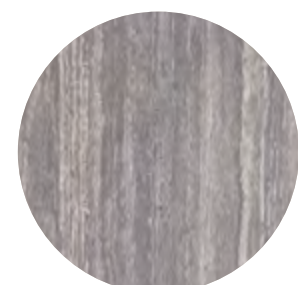
# FINISHES

## DARK SCHEME

### THROUGHOUT THE APARTMENT



EMULSION  
PAINT



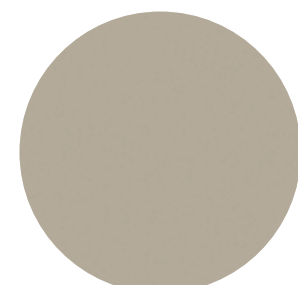
TRAVERTNO GREY  
MATT FINISH



MIRAGE-  
GLOCAL



LAMINATE-  
GREY VICENZ



LAMINATE  
PEBBL GREY

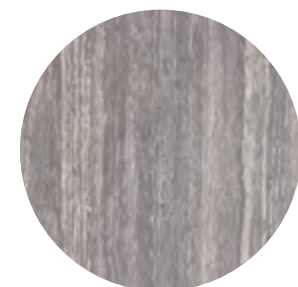


RIBBED WOOD  
PANEL

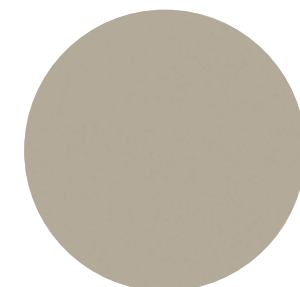
### KITCHEN



EMULSION  
PAINT



TRAVERTNO GREY  
MATT FINISH



LAMINATE  
PEBBL GREY

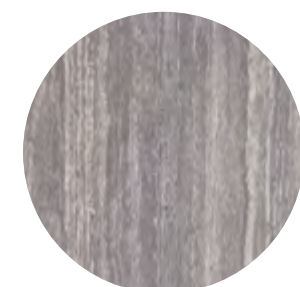
### BATHROOM



EMULSION  
PAINT



MIRAGE-  
GLOCAL



TRAVERTNO GREY  
MATT FINISH



RIBBED WOOD  
PANEL



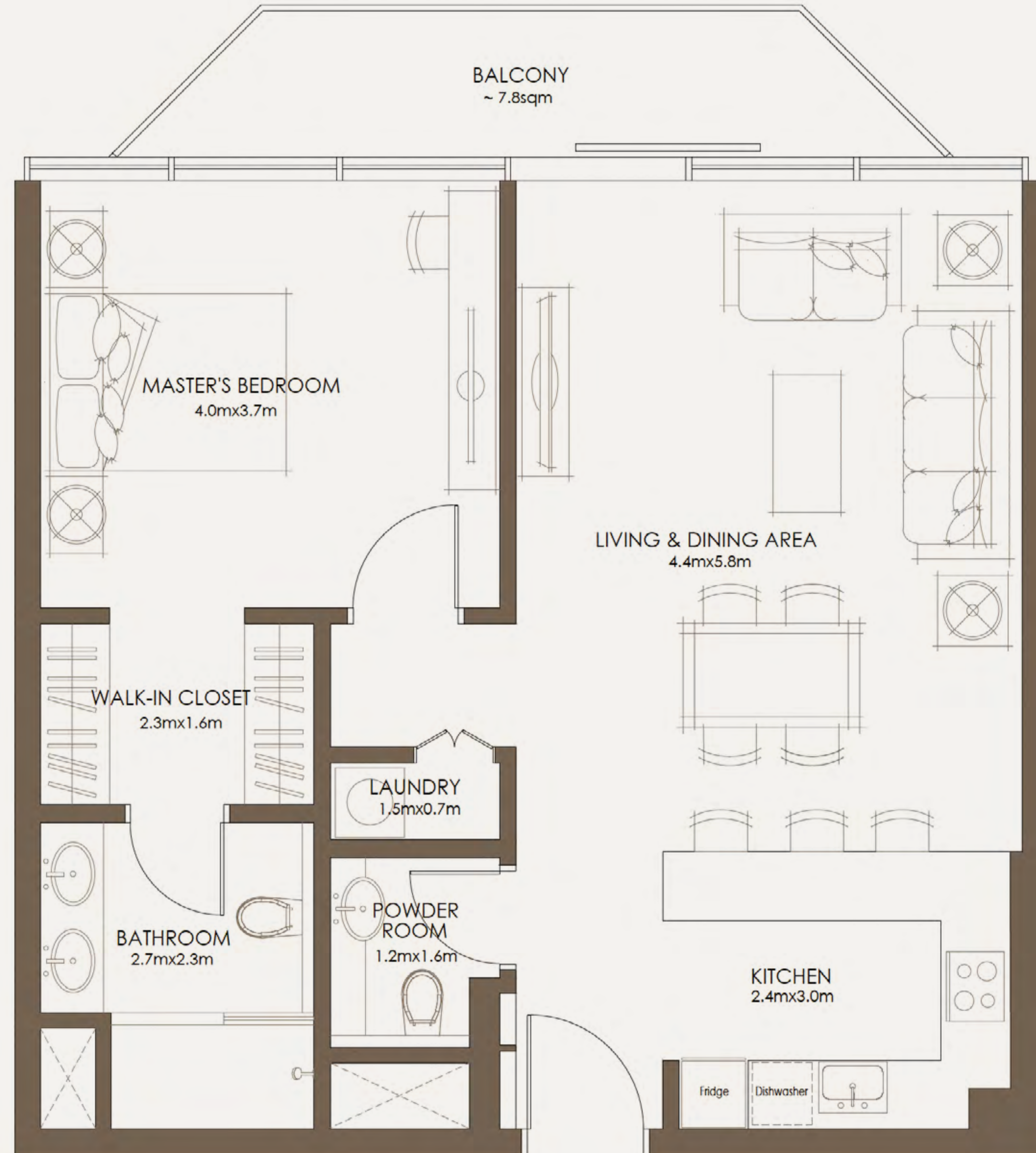
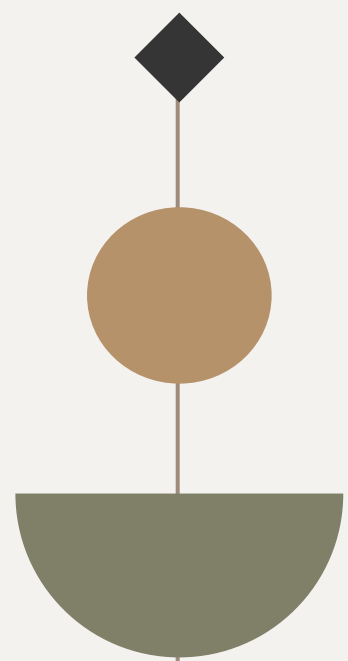


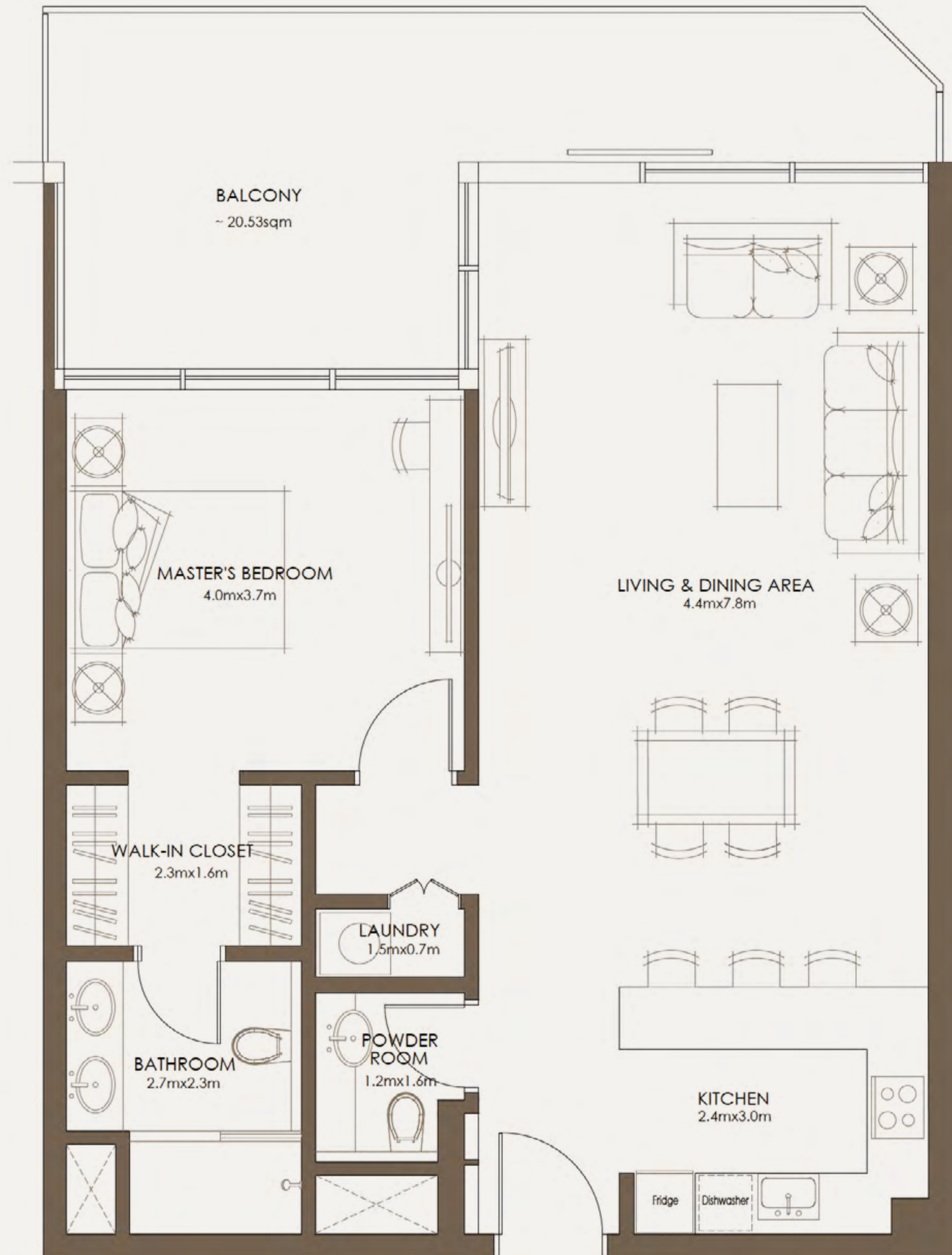
# THE SOURCE OF WELLNESS

Choose from modern 1, 2 and 3-bed apartments and start your journey to holistic health from the comfort of your home.



TYPE A  
1 BEDROOM

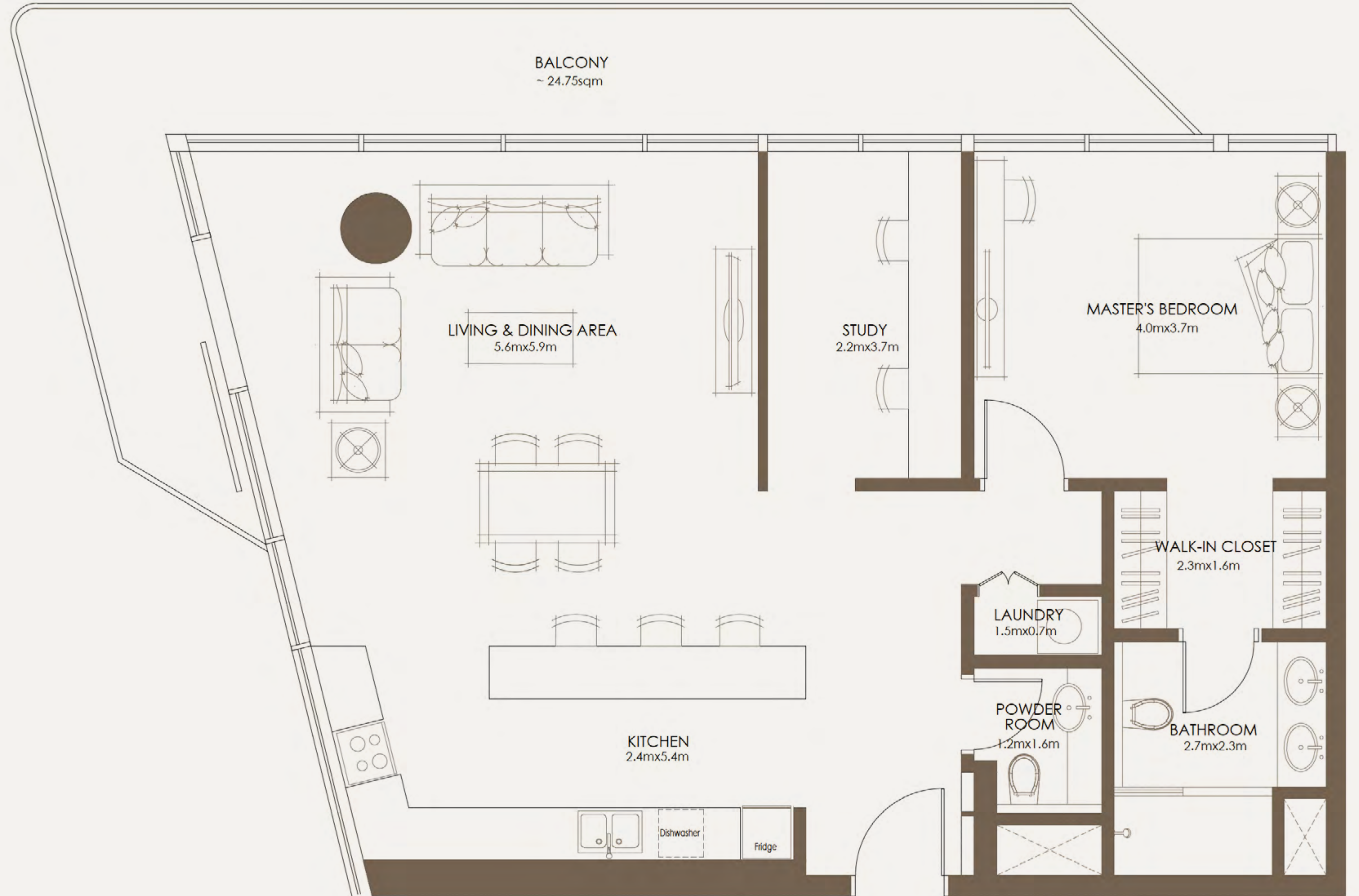
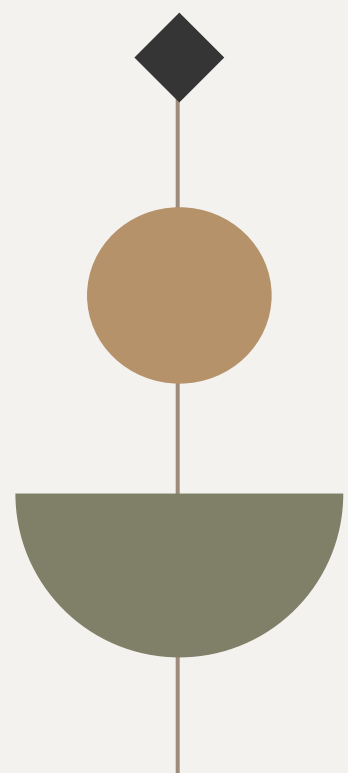




TYPE B  
1 BEDROOM



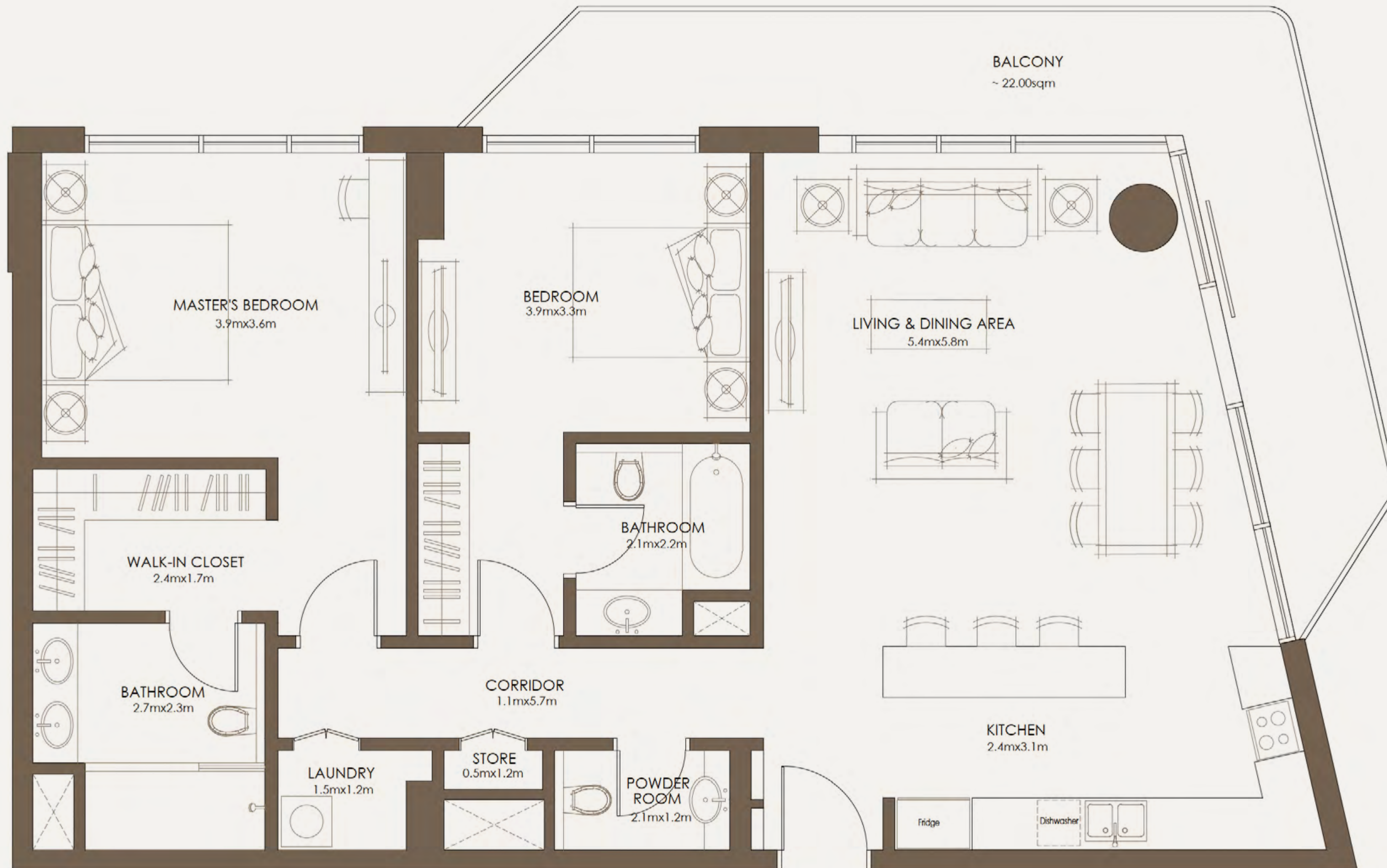
TYPE C  
1 BEDROOM





SLIP INTO 8 HOURS  
OF SERENITY

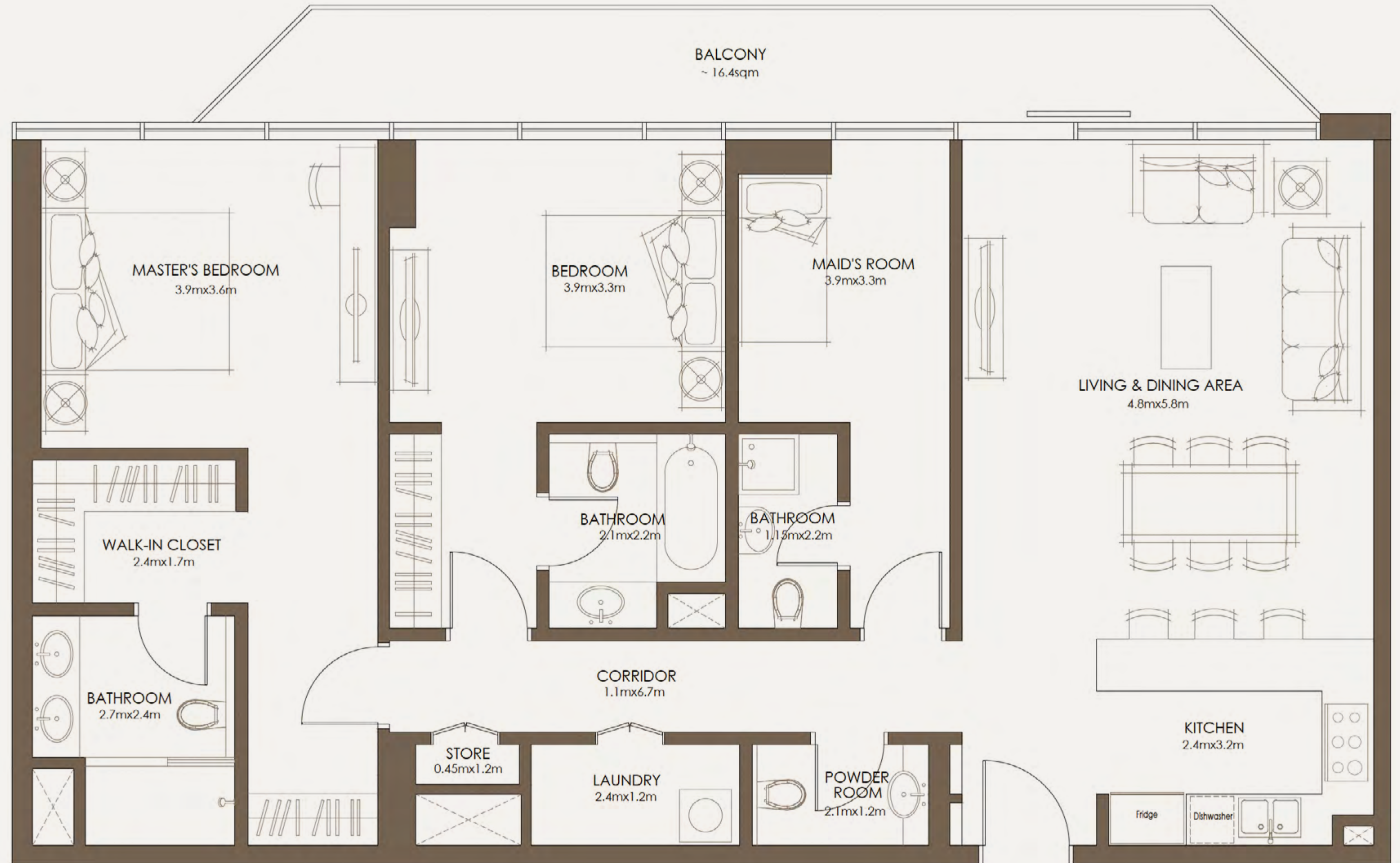
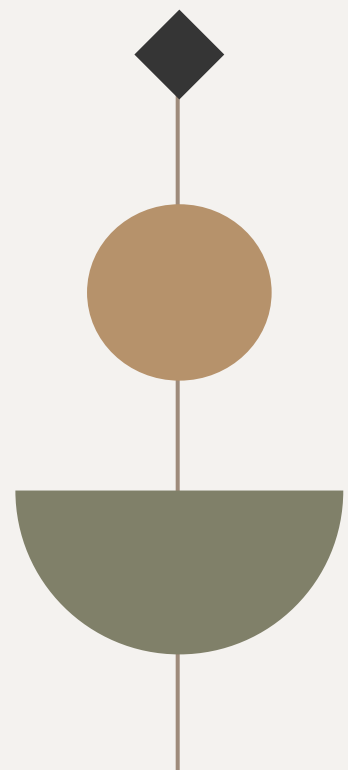




TYPE A  
2 BEDROOM

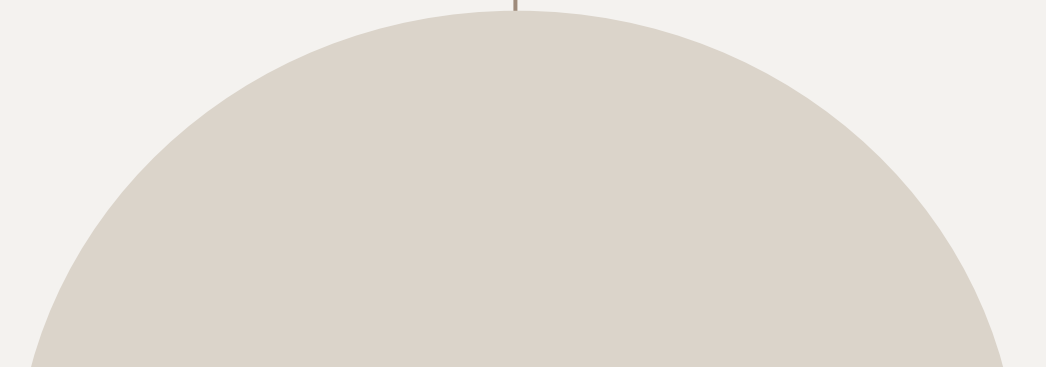
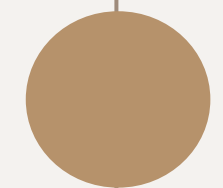


TYPE B  
2 BEDROOM





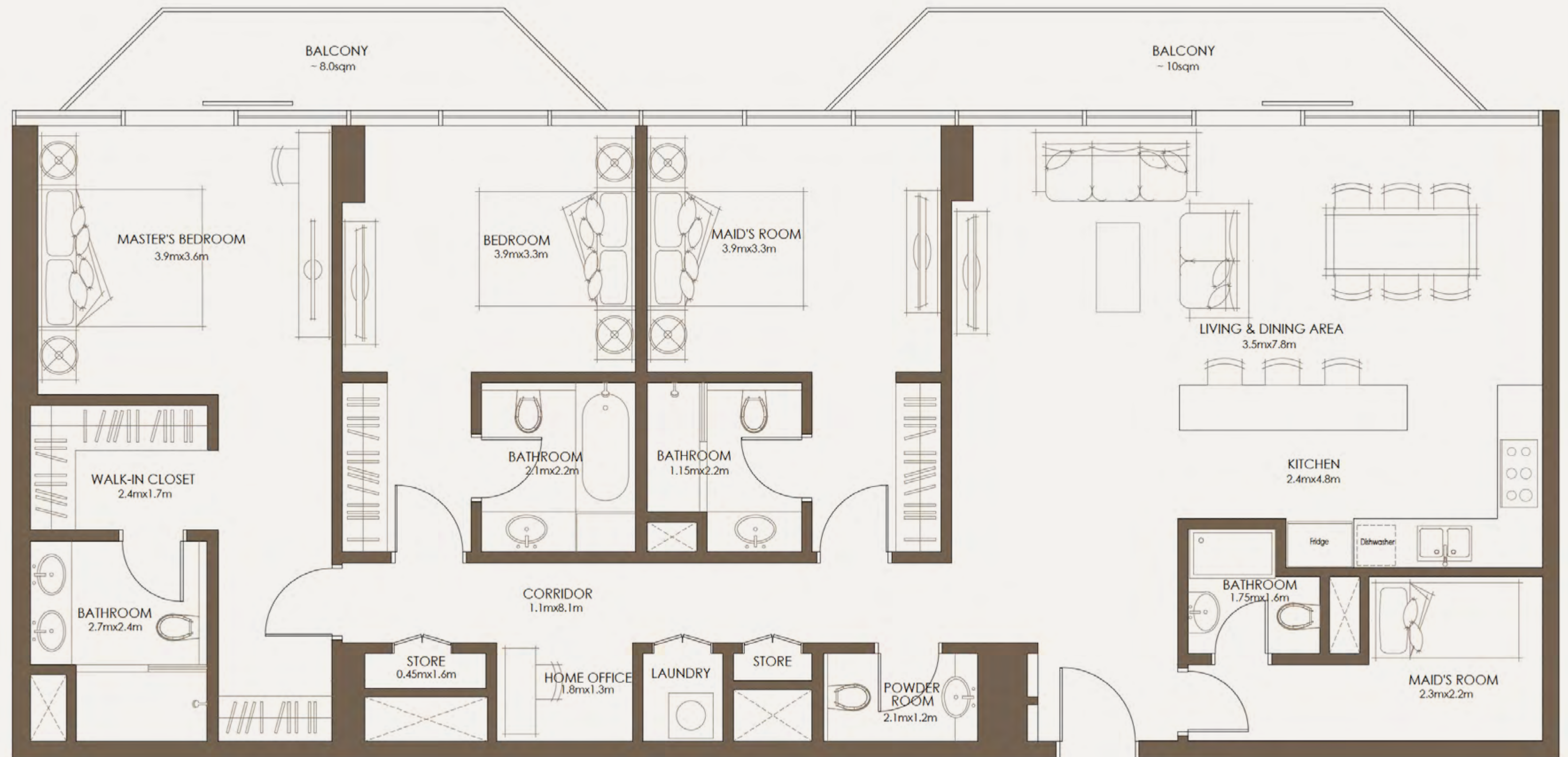
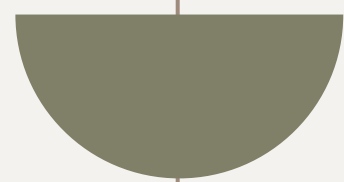
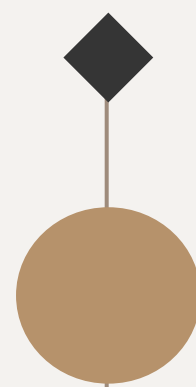
TYPE C  
2 BEDROOM

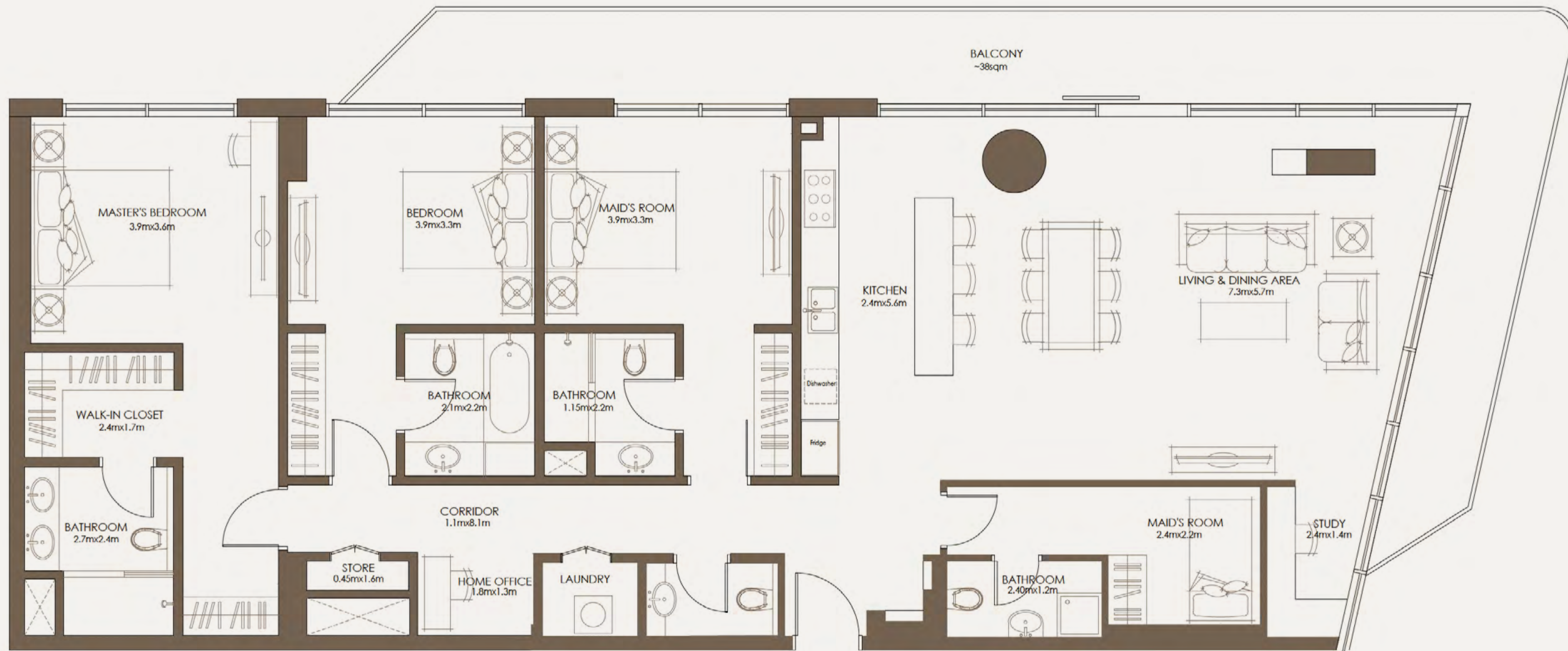


SPACE TO UNWIND  
OR ENTERTAIN

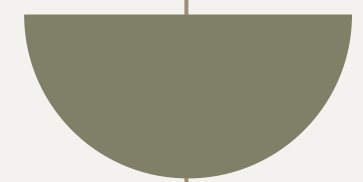
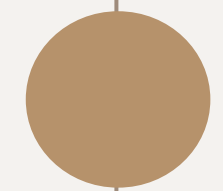


TYPE A  
3 BEDROOM





TYPE B  
3 BEDROOM





# PLANNED FOR LIVING WELL

Explore your unique apartment retreat,  
thoughtfully designed to enhance every day.





FLOORPLATE  
NORTH

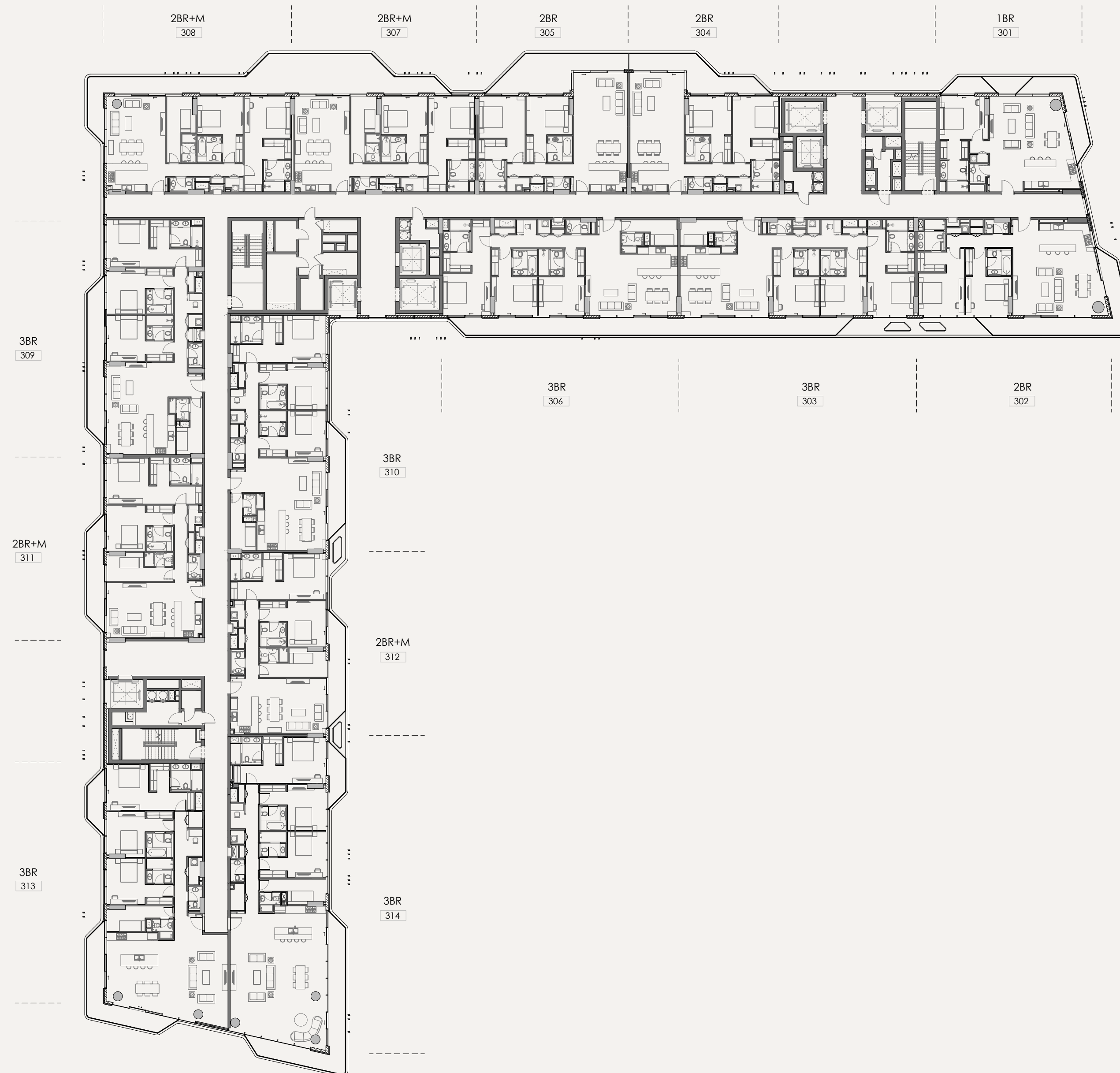


R18 - 1<sup>ST</sup> FLOOR

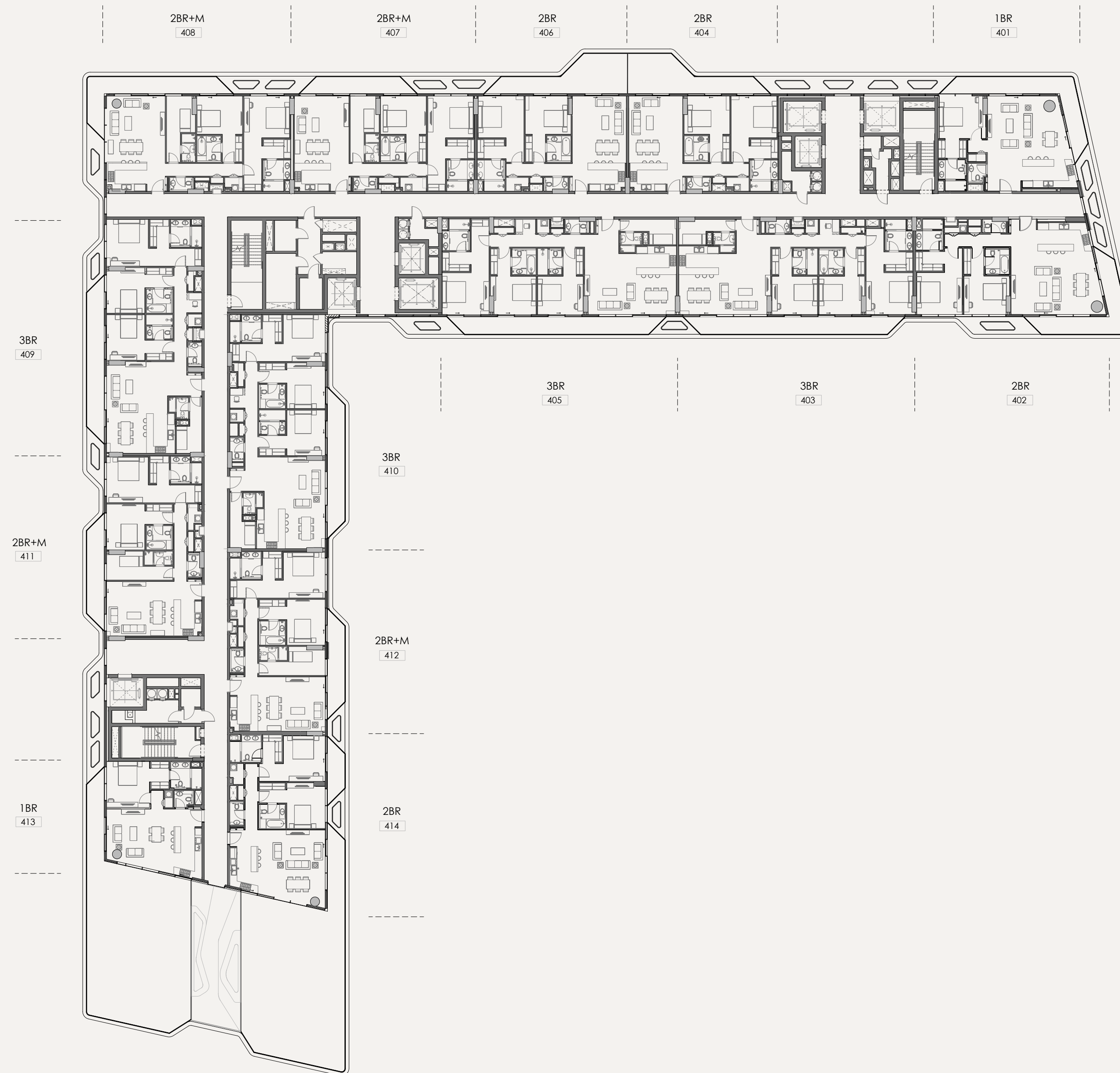
FLOORPLATE  
NORTH



FLOORPLATE  
NORTH



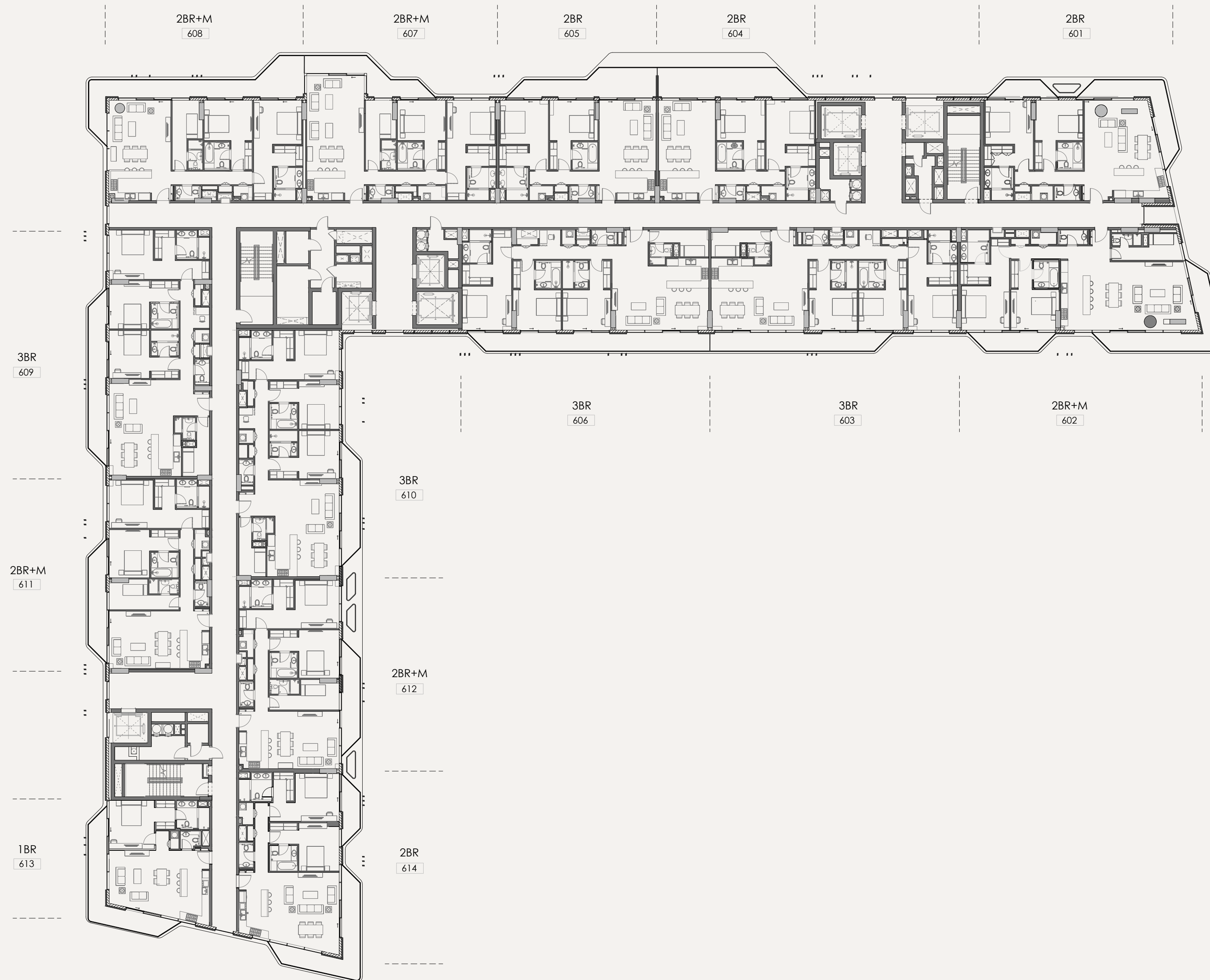
FLOORPLATE  
NORTH



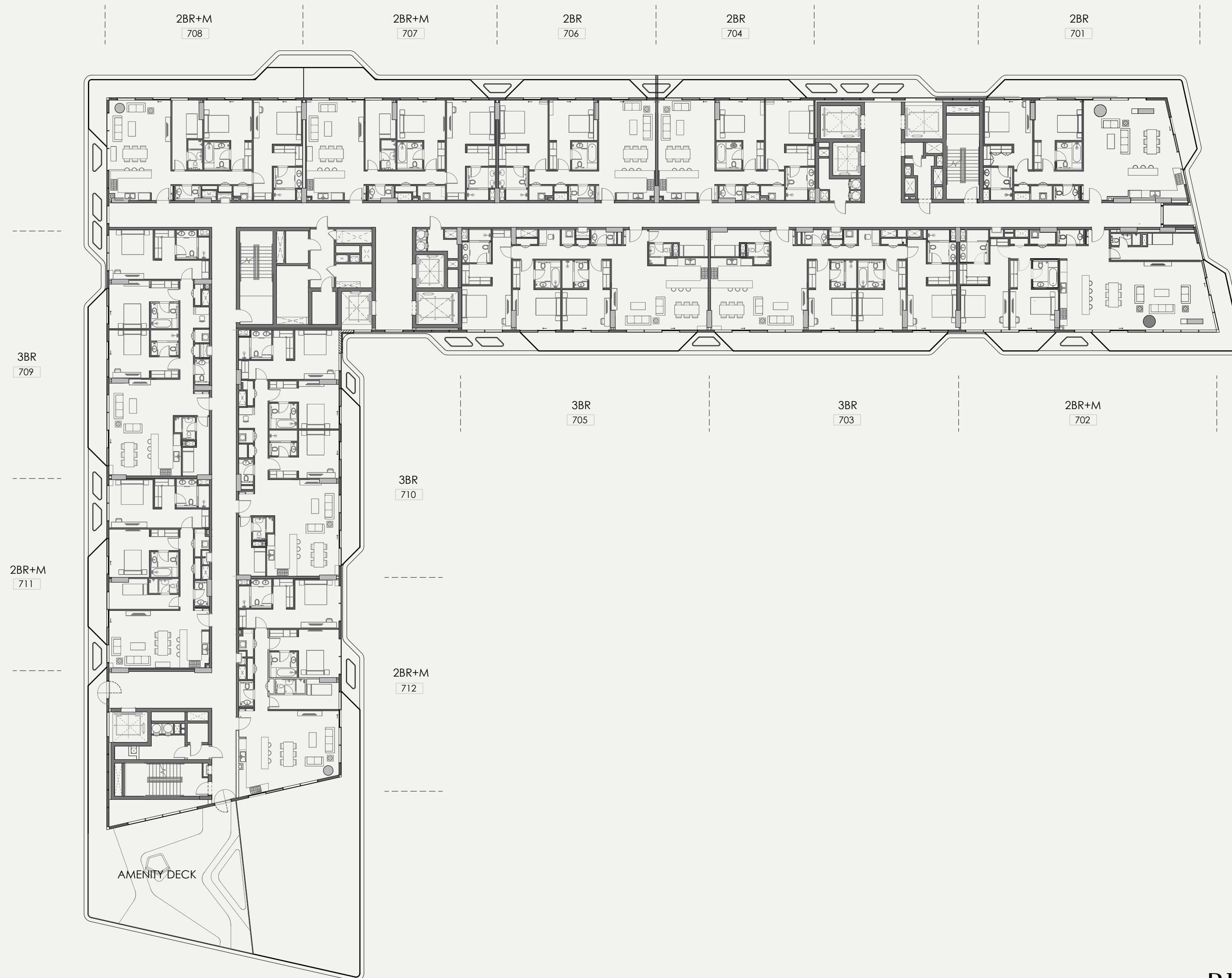
FLOORPLATE  
NORTH



FLOORPLATE  
NORTH

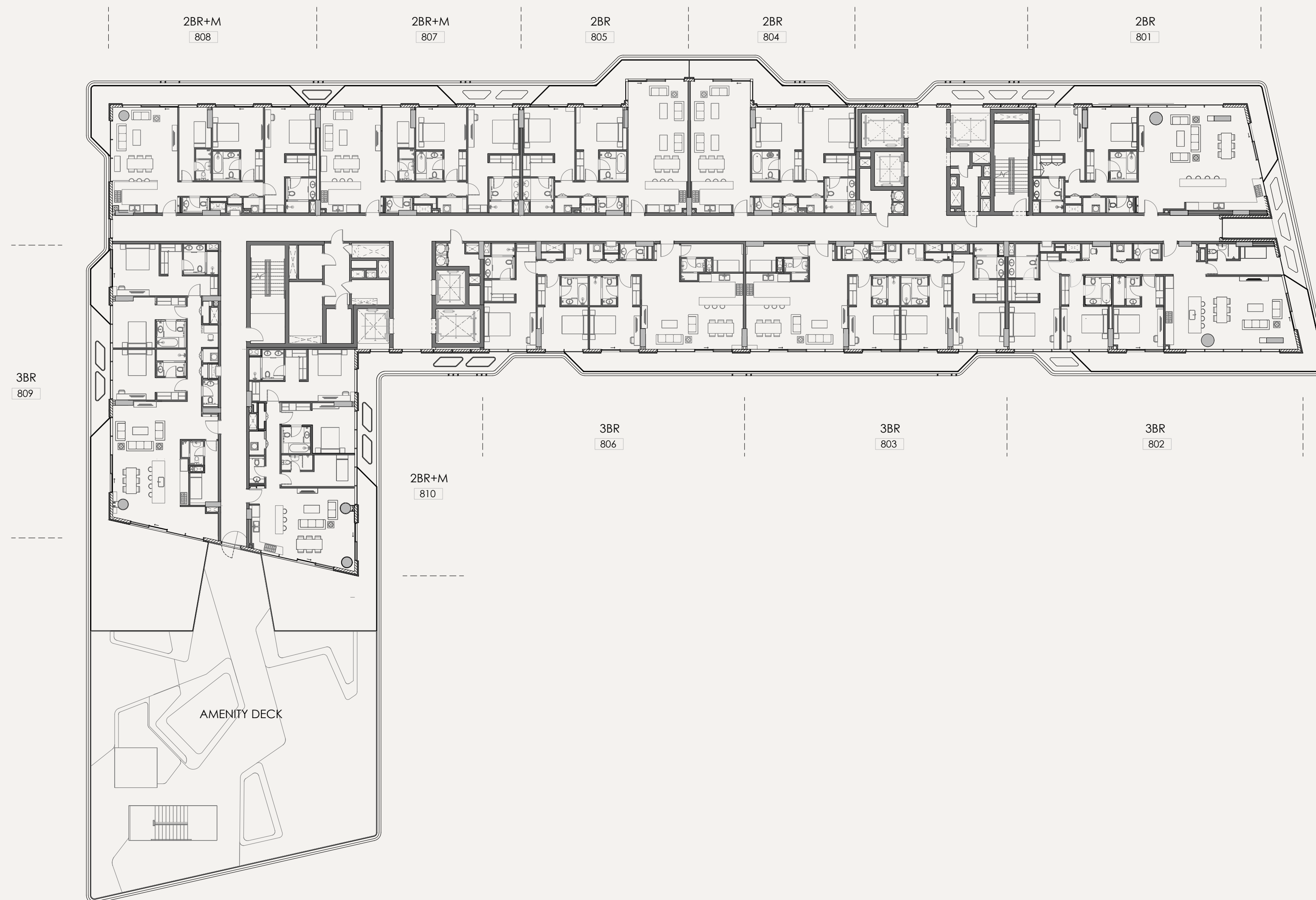


FLOORPLATE  
NORTH



North

FLOORPLATE  
NORTH





YOUR TRANQUIL RETREAT  
AT THE HEART OF IT ALL





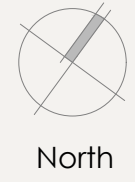
North



# FLOORPLATE SOUTH



R19 - 1<sup>st</sup> FLOOR



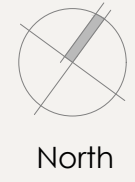
North



# FLOORPLATE SOUTH



R19 - 2<sup>nd</sup> FLOOR



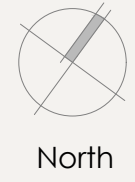
North



# FLOORPLATE SOUTH



R19 - 3<sup>rd</sup> FLOOR



North



# FLOORPLATE SOUTH

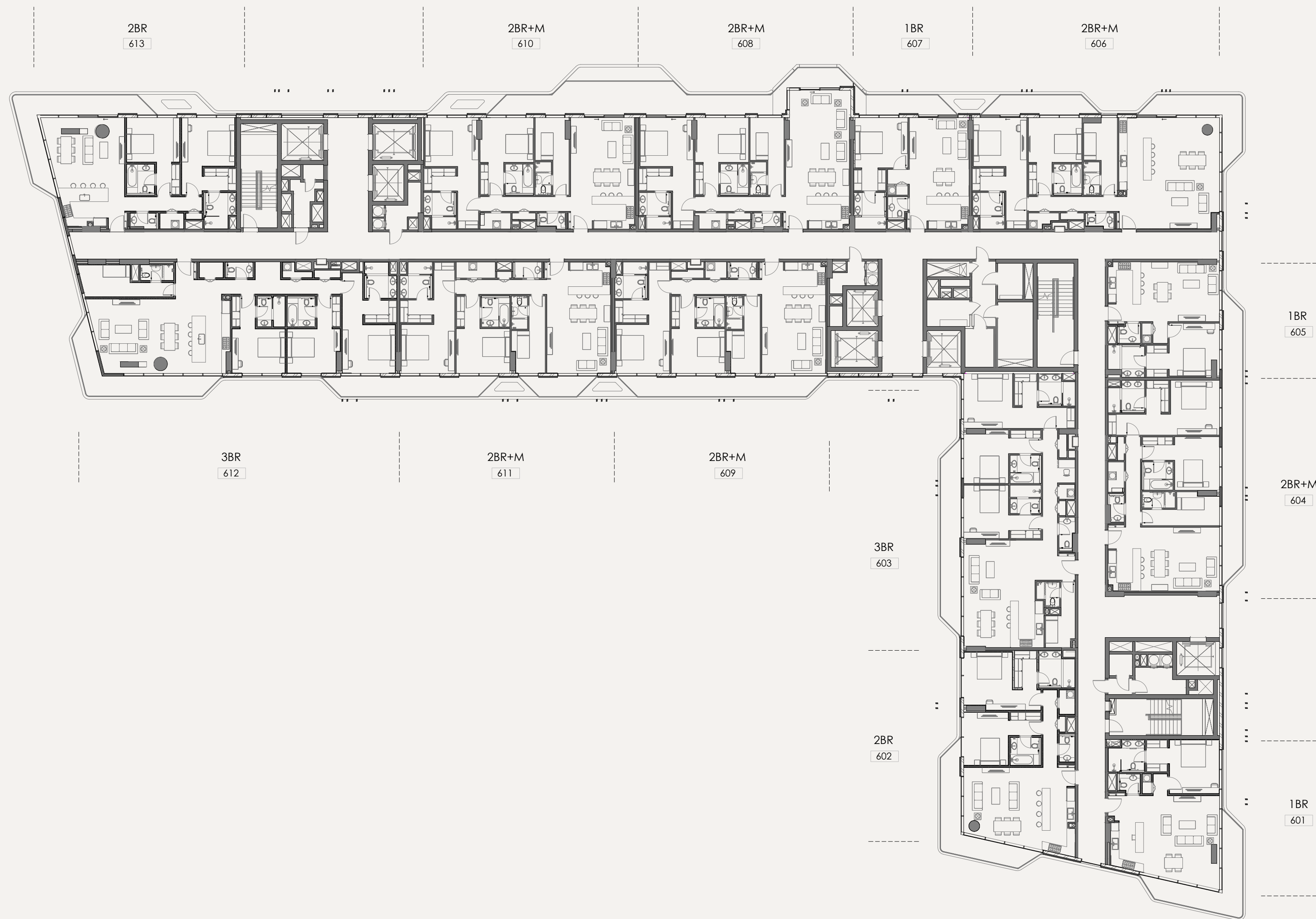


R19 - 4<sup>th</sup> FLOOR



FLOORPLATE  
SOUTH





FLOORPLATE  
SOUTH





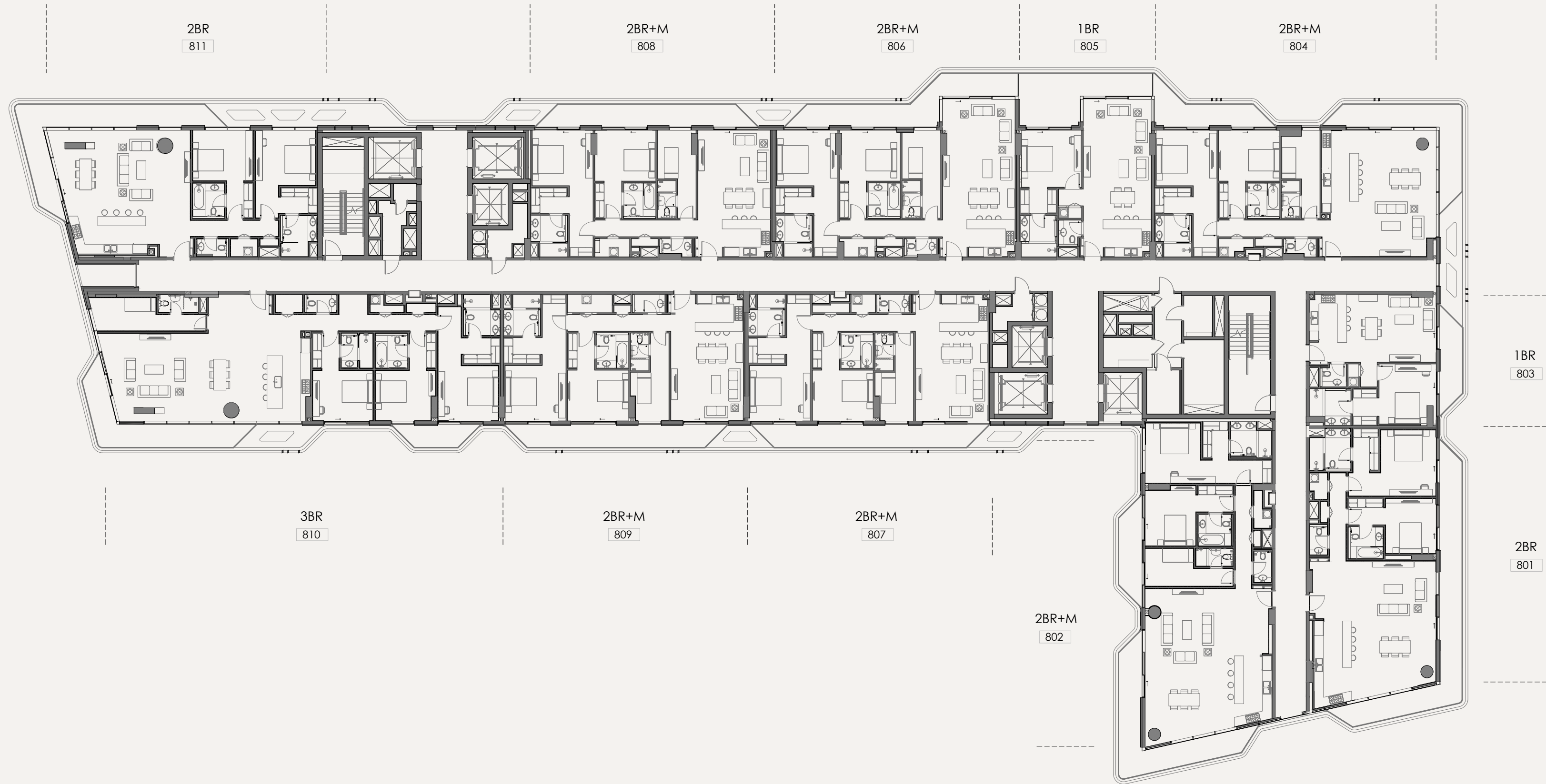
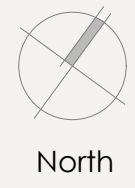
North



FLOORPLATE  
SOUTH







FLOORPLATE  
SOUTH



AN INVIGORATING VIEW  
RISES TO MEET YOU



MINUTES FROM SAADIYAT  
GOLF CLUB AND THE LURE  
OF THE LUSH FAIRWAY



An aerial photograph of the ocean showing several parallel waves moving from the top left towards the bottom right. The water is a deep teal color, and the waves are breaking, creating white foam. The text is overlaid in white, sans-serif font.

INHALE.

EXHALE.

ALL IS WELL



ALDAR.COM  
800 ALDAR